



SINGLE FAMILY HOME

Thatcher




Call for Price

2 Elevations Available

 2,746+ Sq. Ft.

 4 Bedrooms

 3 Bathrooms

 3 Car Garage

Introducing the Thatcher, the luxury sport utility of homes. This ready-to-be-built two-story abode combines upscale living with convenience, featuring the primary suite on the first floor and all daily living on a single level. With ample space and flexibility, the Thatcher includes an oversized loft, a versatile bedroom/study space downstairs, and soaring volume ceilings in the living room. Cap it off with a fantastic party deck for outdoor enjoyment. In honor of Margaret Thatcher, this home embodies strength and sophistication.



Craftsman Elevation



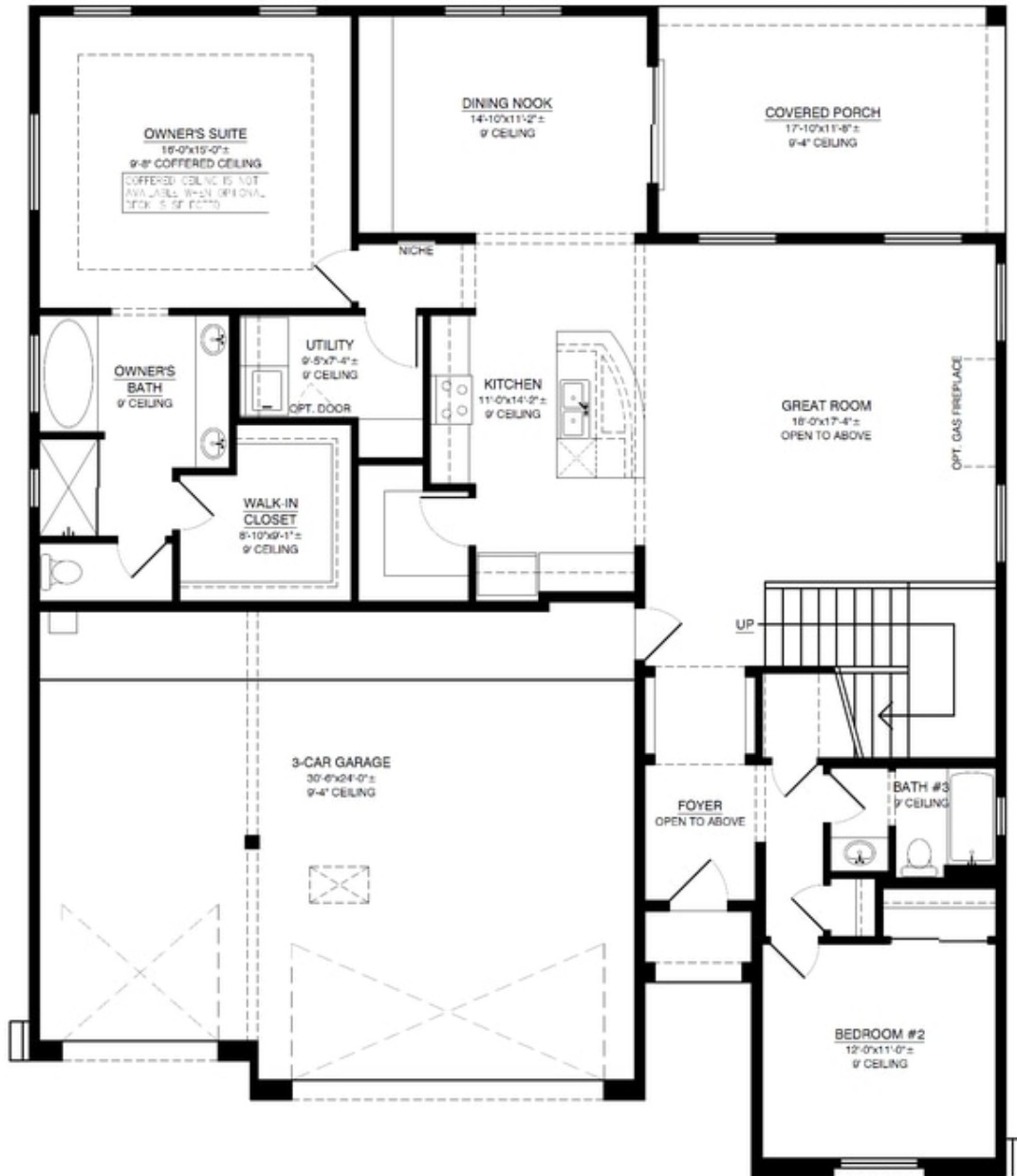
Mission Elevation

Homes may be built in reverse of plans shown, depending on site conditions. Minor architectural changes may be made occasionally at the option of the builder. Printed material is not date stamped. Prices are subject to change. Please reference Abrazo Homes' website for most updated and accurate pricing and information. Please contact your Sales Consultant for details.



Thatcher

First Floor



FIRST FLOOR

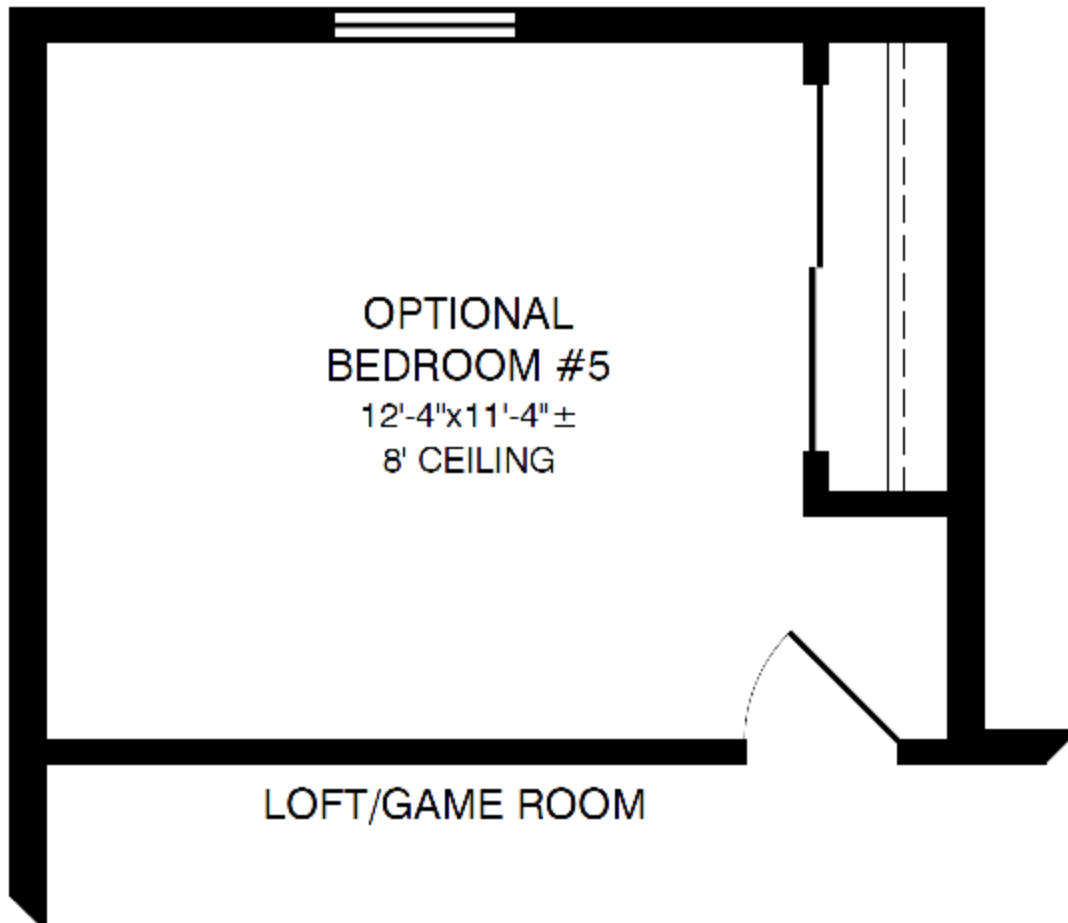
Homes may be built in reverse of plans shown, depending on site conditions. Minor architectural changes may be made occasionally at the option of the builder. Printed material is not date stamped. Prices are subject to change. Please reference Abrazo Homes' website for most updated and accurate pricing and information. Please contact your Sales Consultant for details.

Second Floor



SECOND FLOOR

Optional 5th Bedroom On Second Floor



OPTIONAL BEDROOM #5

ADDITIONAL HEATED AREA: 182.77 SQ. FT.