



SINGLE FAMILY HOME


# Victoria

Available in 3 Communities




## Call for Price

**2 Elevations Available**

 2,594+ Sq. Ft.

 3 Bedrooms

 2.5 Bathrooms

 2 Car Garage

Meet the Victoria, the flagship of the Abrazo fleet. Luxurious and adaptable, it's designed to meet any family's needs. The owner's suite features dual walk-in closets, secondary bedrooms offer a Jack and Jill layout, and there's even an optional casita. Enjoy optimal natural lighting with large sliding glass doors that seamlessly connect indoor and outdoor spaces. In honor of Victoria Woodhull, this home pays homage to progress and inclusivity, celebrating a legacy of brightness.



Mission Elevation



Craftsman Elevation

Homes may be built in reverse of plans shown, depending on site conditions. Minor architectural changes may be made occasionally at the option of the builder. Printed material is not date stamped. Prices are subject to change. Please reference Abrazo Homes' website for most updated and accurate pricing and information. Please contact your Sales Consultant for details.



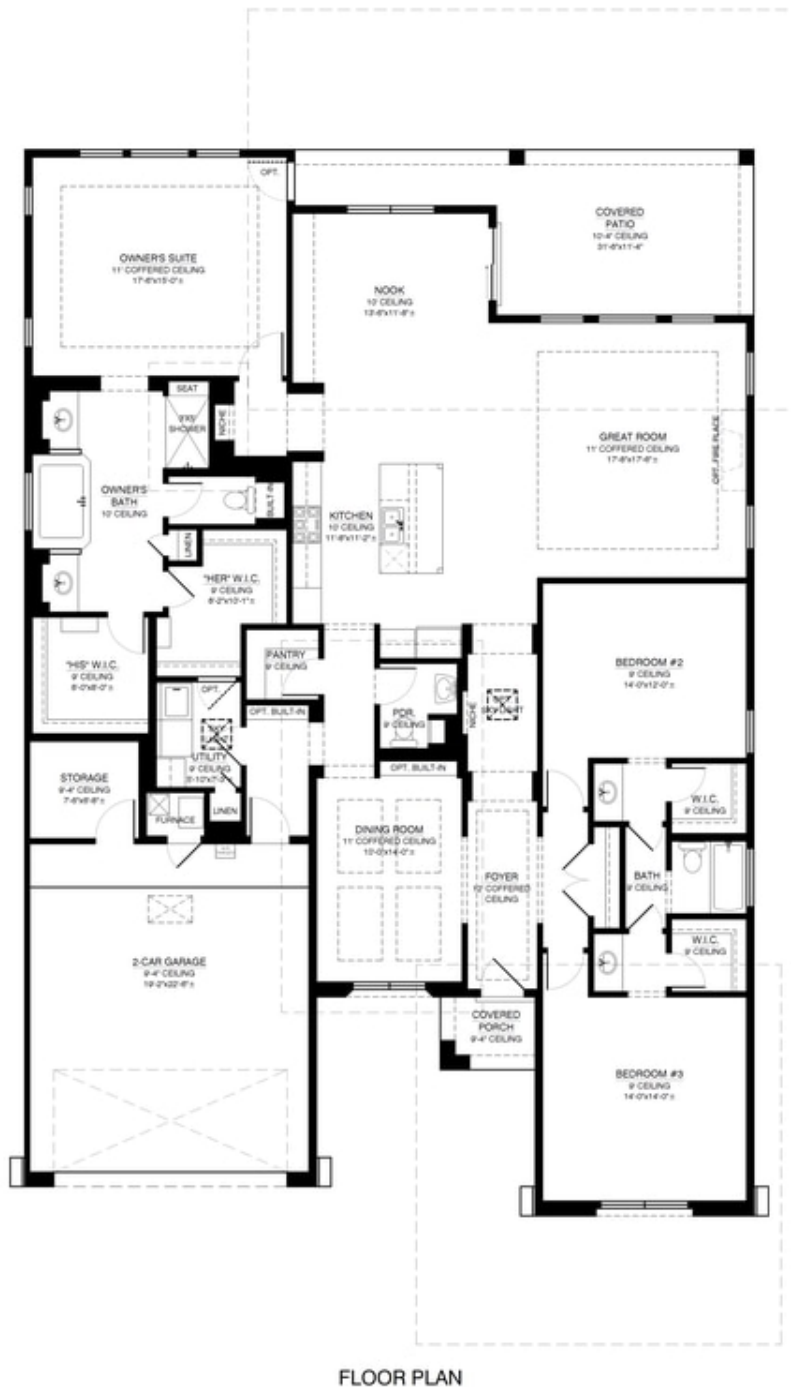


SINGLE FAMILY HOME

# Victoria

Available in 3 Communities

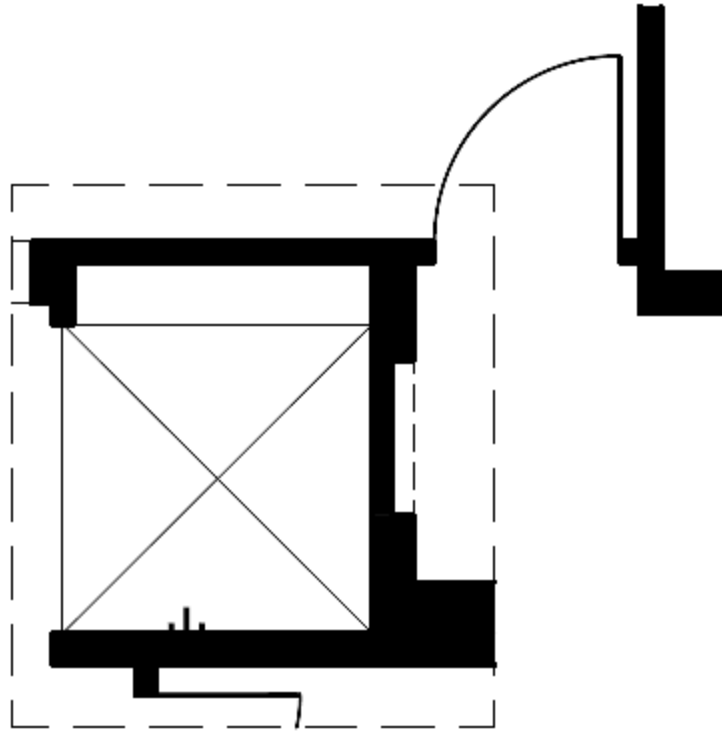
## Victoria Floor Plan



Homes may be built in reverse of plans shown, depending on site conditions. Minor architectural changes may be made occasionally at the option of the builder. Printed material is not date stamped. Prices are subject to change. Please reference Abrazo Homes' website for most updated and accurate pricing and information. Please contact your Sales Consultant for details.



## Optional Shower in Owner's Suite



## OPTIONAL 5'x5' SHOWER IN OWNER'S SUITE

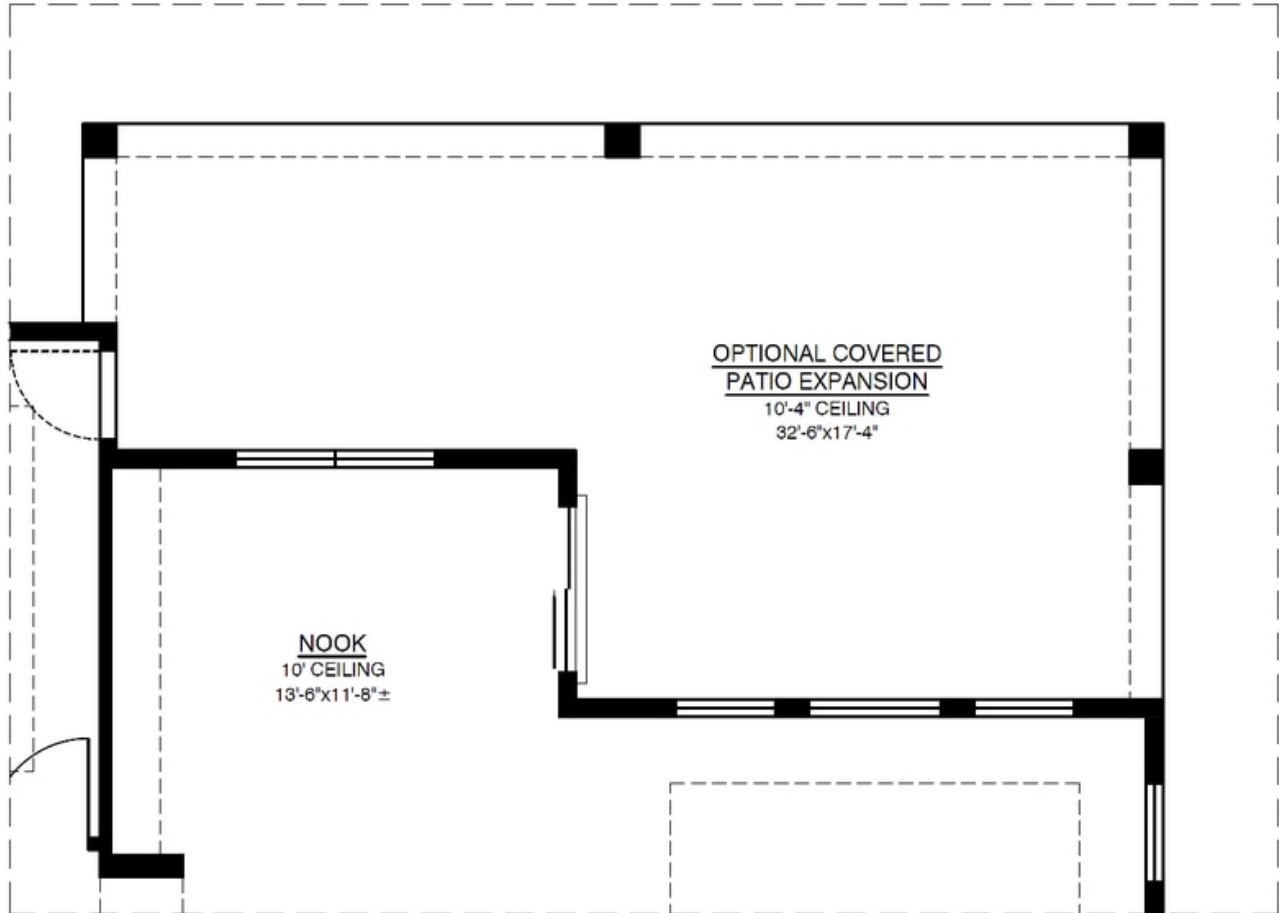


SINGLE FAMILY HOME

# Victoria

Available in 3 Communities

## Optional Covered Patio Expansion

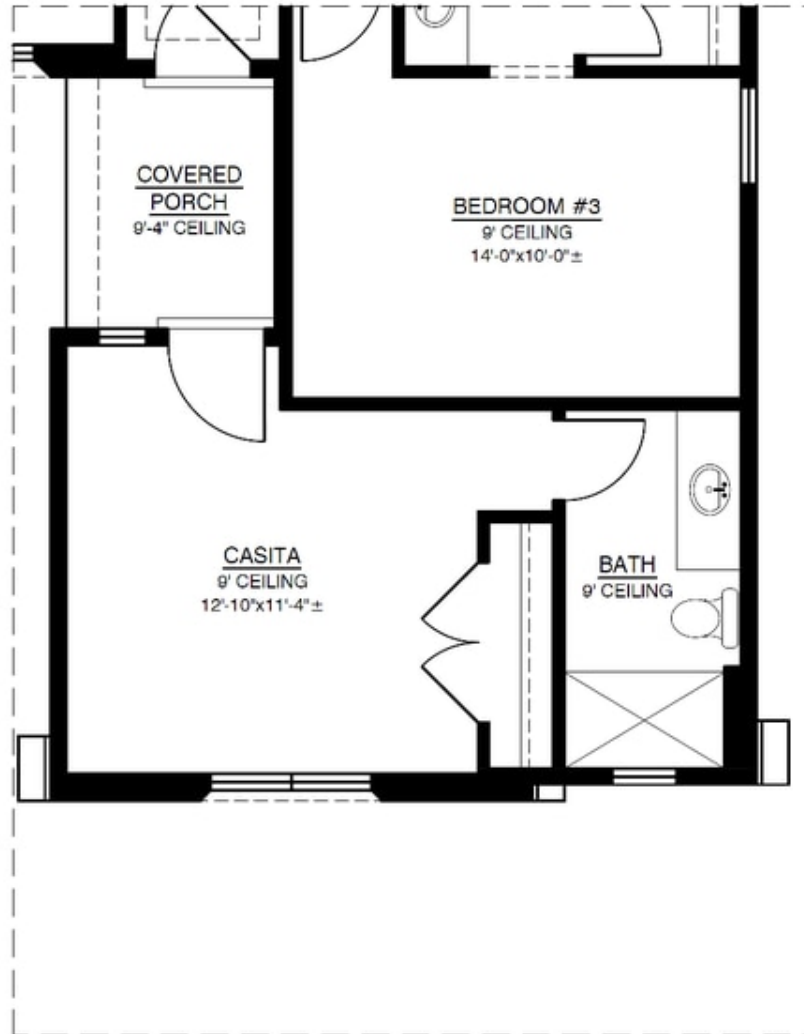


**OPTIONAL COVERED PATIO EXPANSION**  
ADDITIONAL 195.00 SQ. FT. (UNHEATED)

Homes may be built in reverse of plans shown, depending on site conditions. Minor architectural changes may be made occasionally at the option of the builder. Printed material is not date stamped. Prices are subject to change. Please reference Abrazo Homes' website for most updated and accurate pricing and information. Please contact your Sales Consultant for details.



## Optional Casita



### OPTIONAL CASITA

ADDITIONAL 211.66 SQ. FT. (HEATED)

ADDITIONAL 18.41 SQ. FT. (UNHEATED)

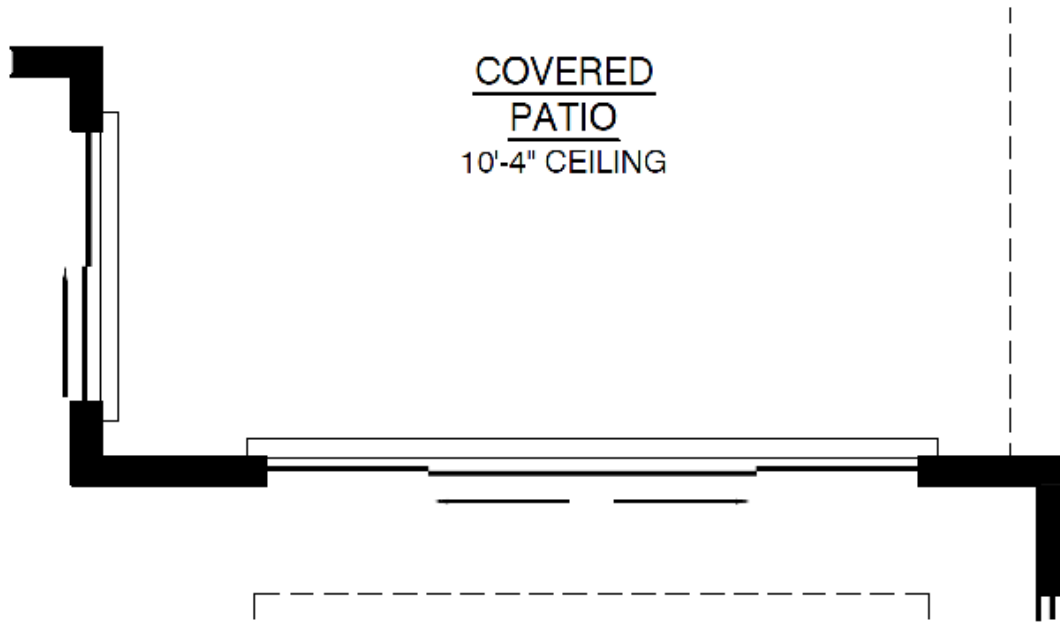


SINGLE FAMILY HOME

# Victoria

Available in 3 Communities

## Optional Sliding Glass Door

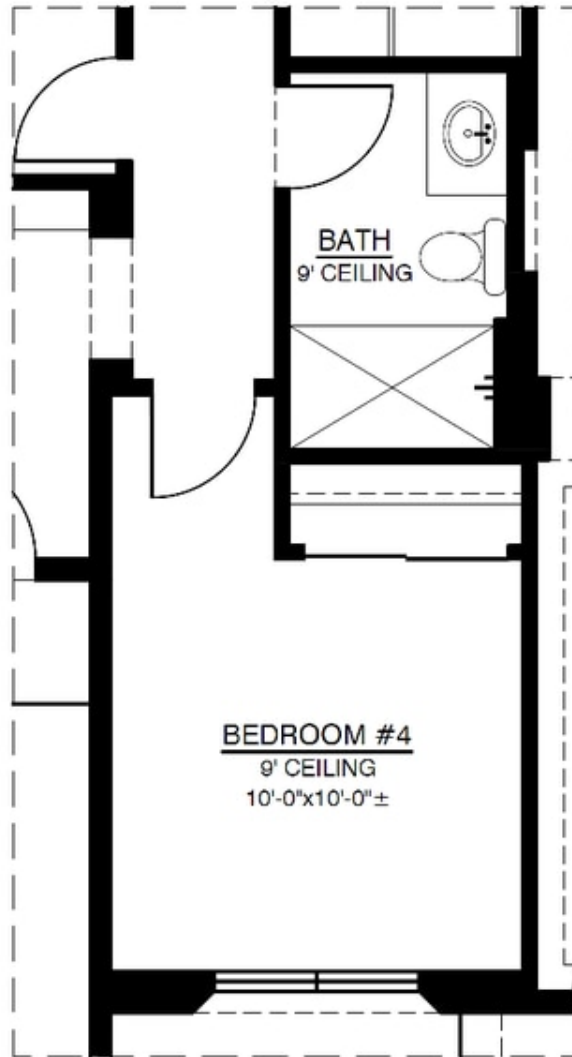


**OPT. 12'x8'-0" SLIDING GLASS DOOR**

Homes may be built in reverse of plans shown, depending on site conditions. Minor architectural changes may be made occasionally at the option of the builder. Printed material is not date stamped. Prices are subject to change. Please reference Abrazo Homes' website for most updated and accurate pricing and information. Please contact your Sales Consultant for details.

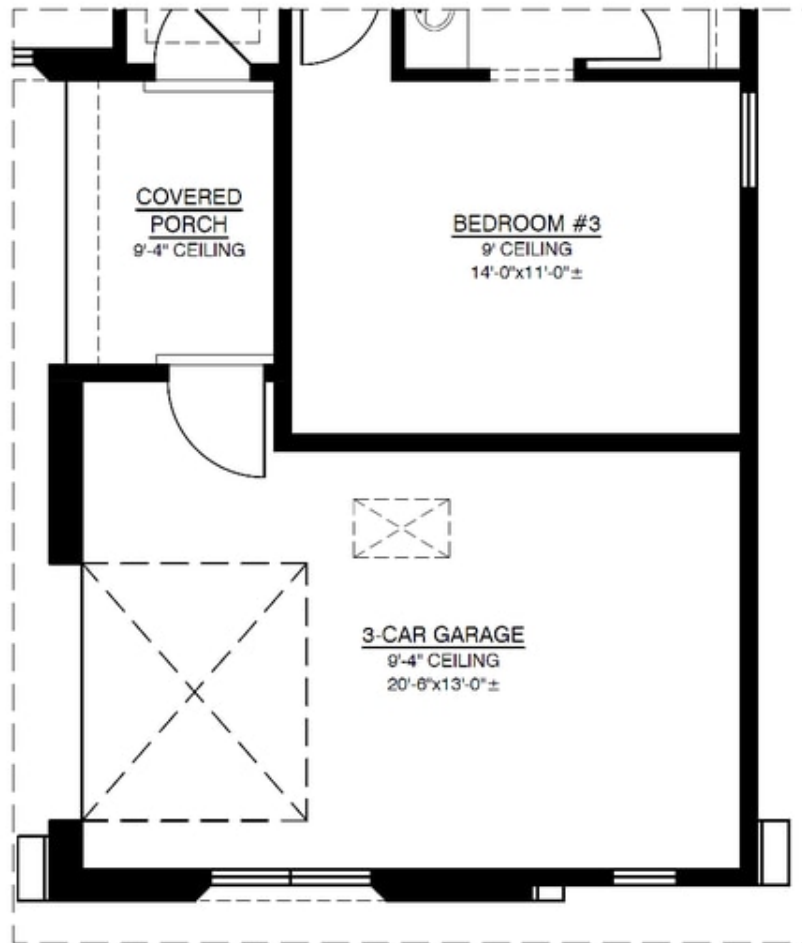


## Optional 4th Bedroom In Lieu of Dining Room



### OPTIONAL BEDROOM #4 & BATH IN LIEU OF DINING ROOM NO CHANGE IN SQUARE FOOTAGE

## Optional 3rd Car Garage



### OPTIONAL 3RD CAR GARAGE

SUBTRACT -52.5 SQ. FT. (HEATED)

ADDITIONAL 295.57 SQ. FT. (UNHEATED)