



SINGLE FAMILY HOME

## Amelia



### Call for Price

#### 3 Elevations Available

-  1,204+ Sq. Ft.
-  3 Bedrooms
-  2 Bathrooms
-  2 Car Garage

Introducing the "Amelia" floor plan, a distinctive creation by Abrazo. With an inviting open concept and three bedrooms, the Amelia provides a cozy atmosphere tailored for everyone—from first-time homebuyers to empty nesters and everyone in between. This thoughtfully designed layout is an original Abrazo offering, crafted to inspire and meet the diverse needs of homeowners. In honor of Amelia Earhart, this home embodies the spirit of exploration and resilience.



Mission Elevation



Craftsman Elevation

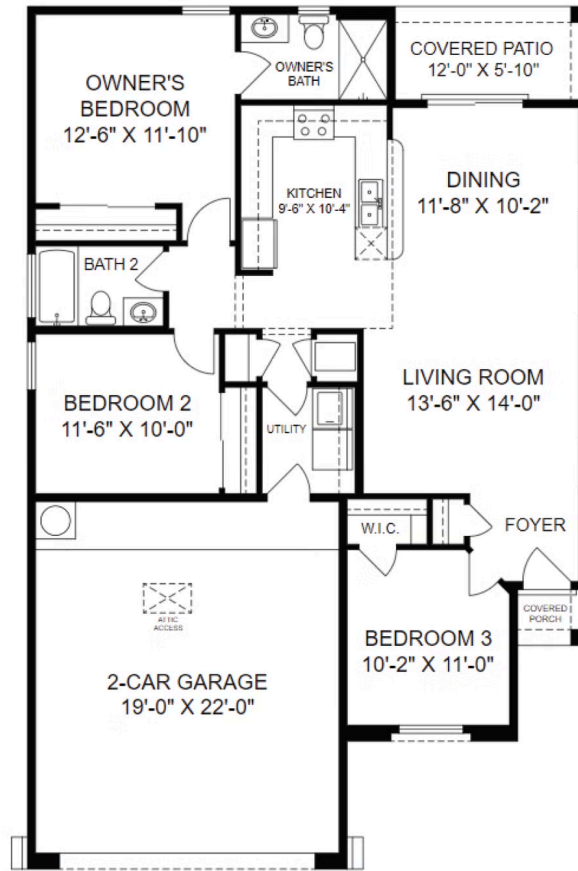


Craftsman with Stone Elevation

Homes may be built in reverse of plans shown, depending on site conditions. Minor architectural changes may be made occasionally at the option of the builder. Printed material is not date stamped. Prices are subject to change. Please reference Abrazo Homes' website for most updated and accurate pricing and information. Please contact your Sales Consultant for details.



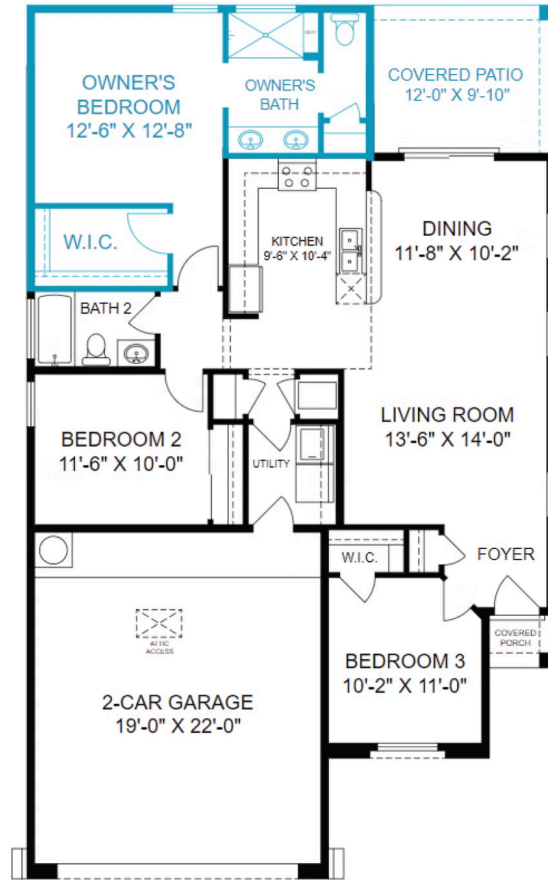
Amelia Floor Plan - 1204



Homes may be built in reverse of plans shown, depending on site conditions. Minor architectural changes may be made occasionally at the option of the builder. Printed material is not date stamped. Prices are subject to change. Please reference Abrazo Homes' website for most updated and accurate pricing and information. Please contact your Sales Consultant for details.



## Amelia Floor Plan Owner's Suite Expansion - 1296



Homes may be built in reverse of plans shown, depending on site conditions. Minor architectural changes may be made occasionally at the option of the builder. Printed material is not date stamped. Prices are subject to change. Please reference Abrazo Homes' website for most updated and accurate pricing and information. Please contact your Sales Consultant for details.

