






SINGLE FAMILY HOME
Chardonnay
Available in 11 Community



Call for Price

2 Elevations Available

-  1,266+ Sq. Ft.
-  2 Bedrooms
-  2 Bathrooms
-  2 Car Garage

Introducing "The Chardonnay," a single-story gem that takes the best of its sister plan "The Riesling" and adds a sprinkle of sophistication. This 2 bedroom, 2 bathroom home features an upgraded 2-car garage, a larger second bedroom with a new walk-in closet, and an expanded great room for extra comfort and style.

Enjoy the seamless flow between the kitchen, dining room, and great room, perfect for entertaining or relaxing. Step out onto the covered patio, with an option to expand, making it the ultimate spot to unwind after a busy day or relax over the weekend.

"The Chardonnay" offers more space, more storage, and more style, making every square foot count in creating a home that's not just efficient but also wonderfully inviting. Welcome to your delightful retreat, where every detail is designed for a better way of living.



1266 The Chardonnay Cottage



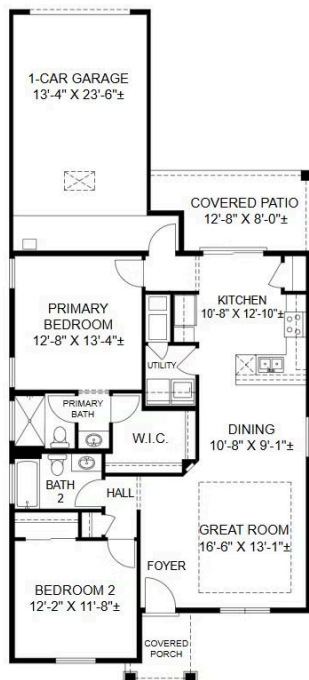
1266 The Chardonnay Farmhouse

Homes may be built in reverse of plans shown, depending on site conditions. Minor architectural changes may be made occasionally at the option of the builder. Printed material is not date stamped. Prices are subject to change. Please reference Abrazo Homes' website for most updated and accurate pricing and information. Please contact your Sales Consultant for details.





SINGLE FAMILY HOME
Chardonnay
Available in 11 Community



Homes may be built in reverse of plans shown, depending on site conditions. Minor architectural changes may be made occasionally at the option of the builder. Printed material is not date stamped. Prices are subject to change. Please reference Abrazo Homes' website for most updated and accurate pricing and information. Please contact your Sales Consultant for details.

