



SINGLE FAMILY HOME
Frida Lux
Available in 1 Communities



Call for Price

5 Elevations Available

-  1,406+ Sq. Ft.
-  3 Bedrooms
-  2 Bathrooms
-  2 Car Garage

Introducing the "Frida" floor plan, Abrazo's inaugural creation, meticulously refined and perfected over the years. This single-story home features three bedrooms and two baths, seamlessly balancing functionality with affordability. The "Frida" offers a spacious primary bedroom, ensuring comfort and relaxation, and includes a covered porch for outdoor enjoyment. Discover a thoughtfully designed layout that checks all the boxes. In honor of Frida Kahlo, this home pays homage to artistic spirit and timeless allure.



Frida - Mission - Tile Roof



Frida - Mission - Shingle Roof



Frida - Craftsman w/Stone - Tile Roof



Frida - Craftsman w/Stone - Shingle Roof



Frida - Craftsman w/Stone; 3 Car - Tile Roof

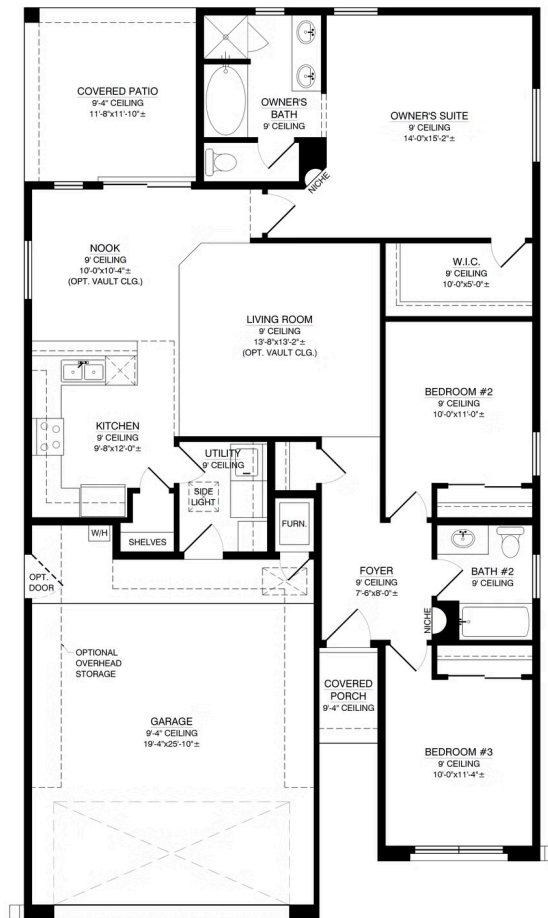
Homes may be built in reverse of plans shown, depending on site conditions. Minor architectural changes may be made occasionally at the option of the builder. Printed material is not date stamped. Prices are subject to change. Please reference Abrazo Homes' website for most updated and accurate pricing and information. Please contact your Sales Consultant for details.





SINGLE FAMILY HOME
Frida Lux
Available in 1 Communities

The Frida 1406 Floor Plan



Homes may be built in reverse of plans shown, depending on site conditions. Minor architectural changes may be made occasionally at the option of the builder. Printed material is not date stamped. Prices are subject to change. Please reference Abrazo Homes' website for most updated and accurate pricing and information. Please contact your Sales Consultant for details.

