



SINGLE FAMILY HOME


# Ixtapa

Available in 2 Communities




## Call for Price

4 Elevations Available

 1,503+ Sq. Ft.

 3 Bedrooms

 2 Bathrooms

 2 Car Garage

Known for its beautiful beaches and spectacular swimming spots, the Mexican beach town of Ixtapa has a modern vibe. Our Ixtapa floor plan shares a similar hassle-free, all-inclusive getaway feel that is a great option for those looking for an affordable place that feels larger than it really is. This open floor concept makes great use of space that makes you feel right at home.



Contemporary Elevation



Modern Elevation



Contemporary Elevation with flex room

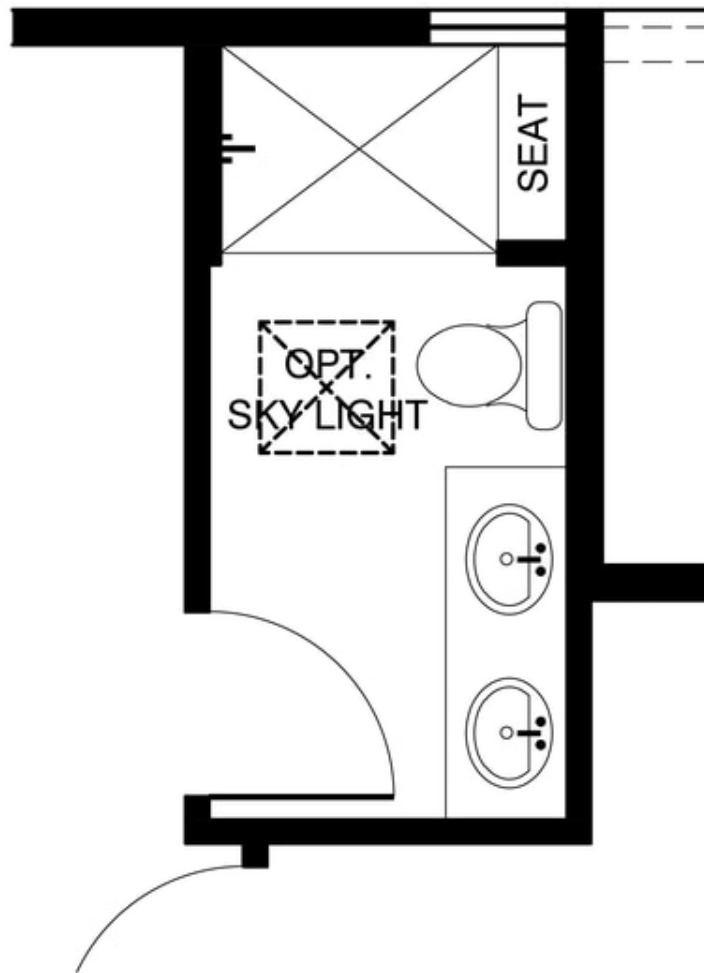


Modern Elevation with 3rd car garage

Homes may be built in reverse of plans shown, depending on site conditions. Minor architectural changes may be made occasionally at the option of the builder. Printed material is not date stamped. Prices are subject to change. Please reference Abrazo Homes' website for most updated and accurate pricing and information. Please contact your Sales Consultant for details.



## Optional Owners Suite Shower



**OPT. 4' SHOWER W/ SEAT**  
**NO CHANGE IN SQUARE FOOTAGE**

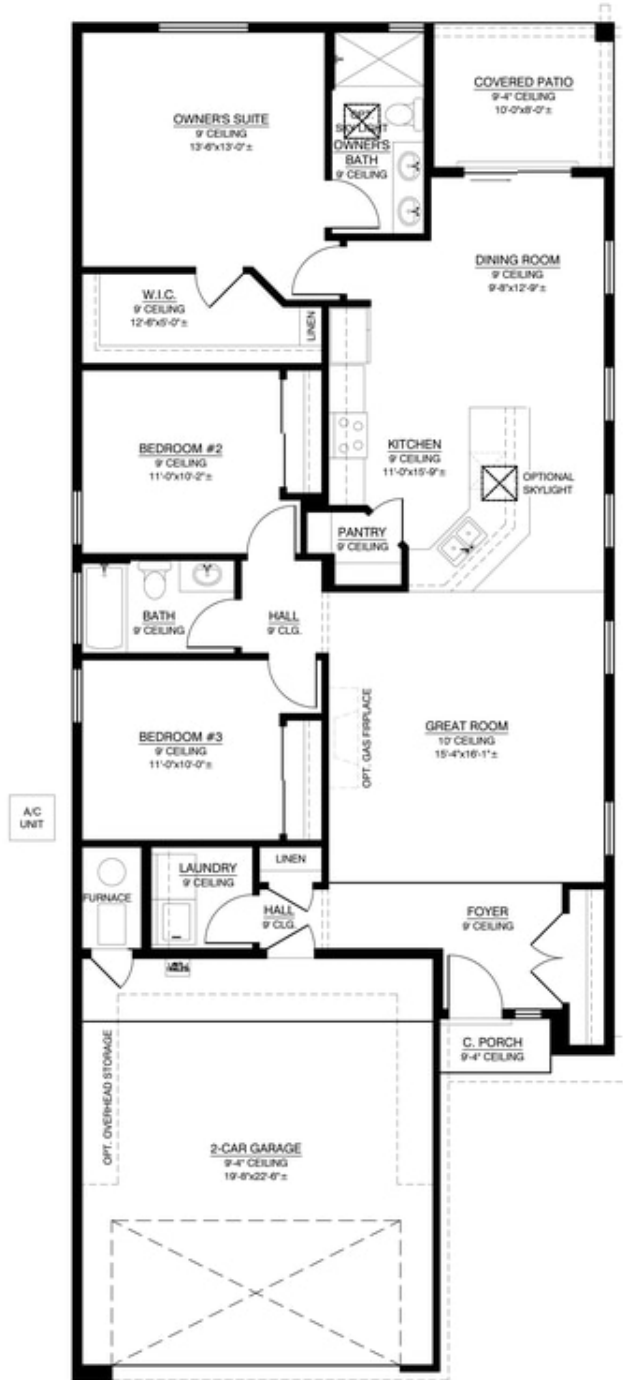


SINGLE FAMILY HOME

# Ixtapa

Available in 2 Communities

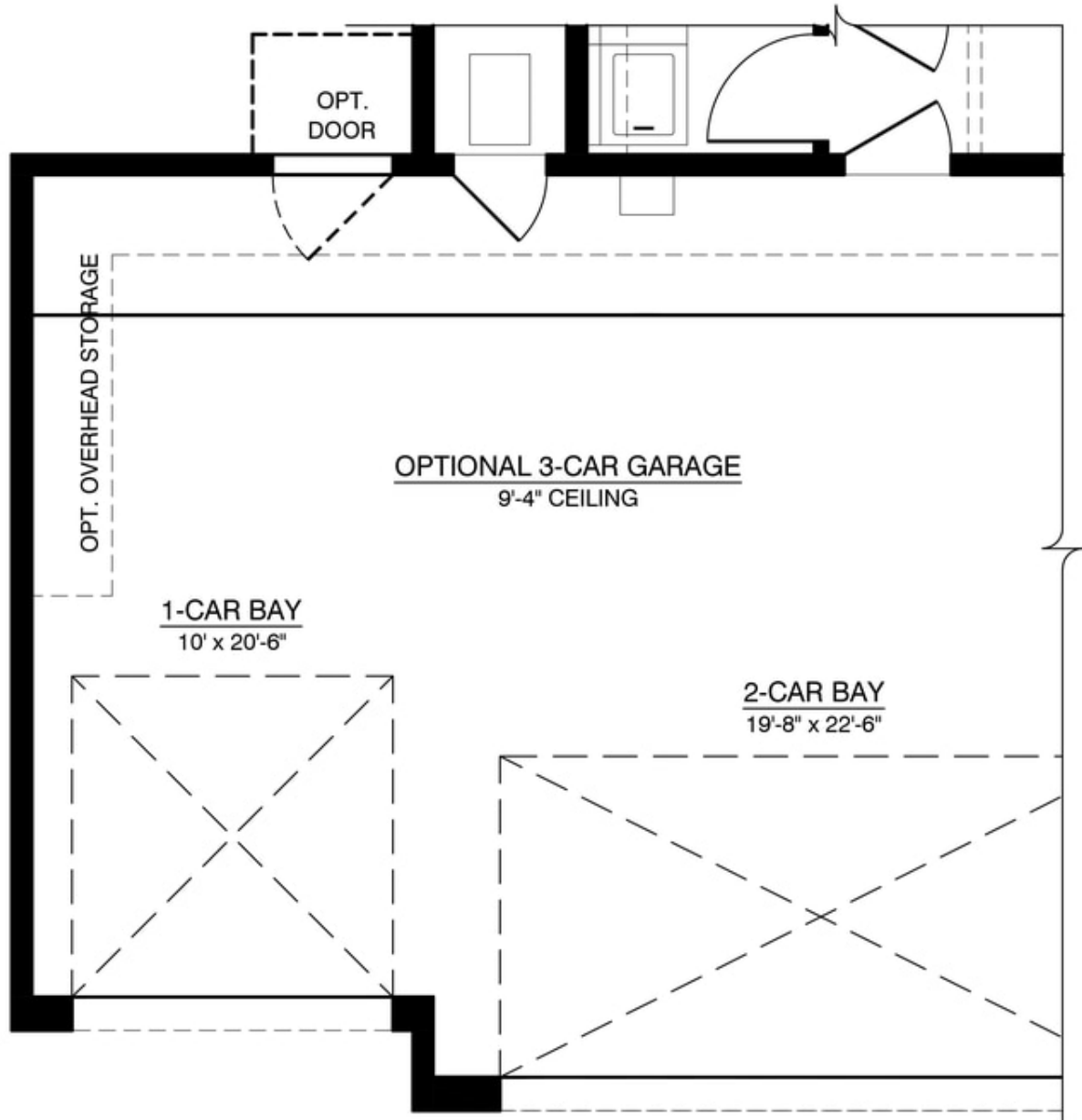
## The Ixtapa Floor Plan



Homes may be built in reverse of plans shown, depending on site conditions. Minor architectural changes may be made occasionally at the option of the builder. Printed material is not date stamped. Prices are subject to change. Please reference Abrazo Homes' website for most updated and accurate pricing and information. Please contact your Sales Consultant for details.



## Optional 3rd Car Garage



## FLOOR PLAN OPTIONAL 3-CAR GARAGE

Homes may be built in reverse of plans shown, depending on site conditions. Minor architectural changes may be made occasionally at the option of the builder. Printed material is not date stamped. Prices are subject to change. Please reference Abrazo Homes' website for most updated and accurate pricing and information. Please contact your Sales Consultant for details.

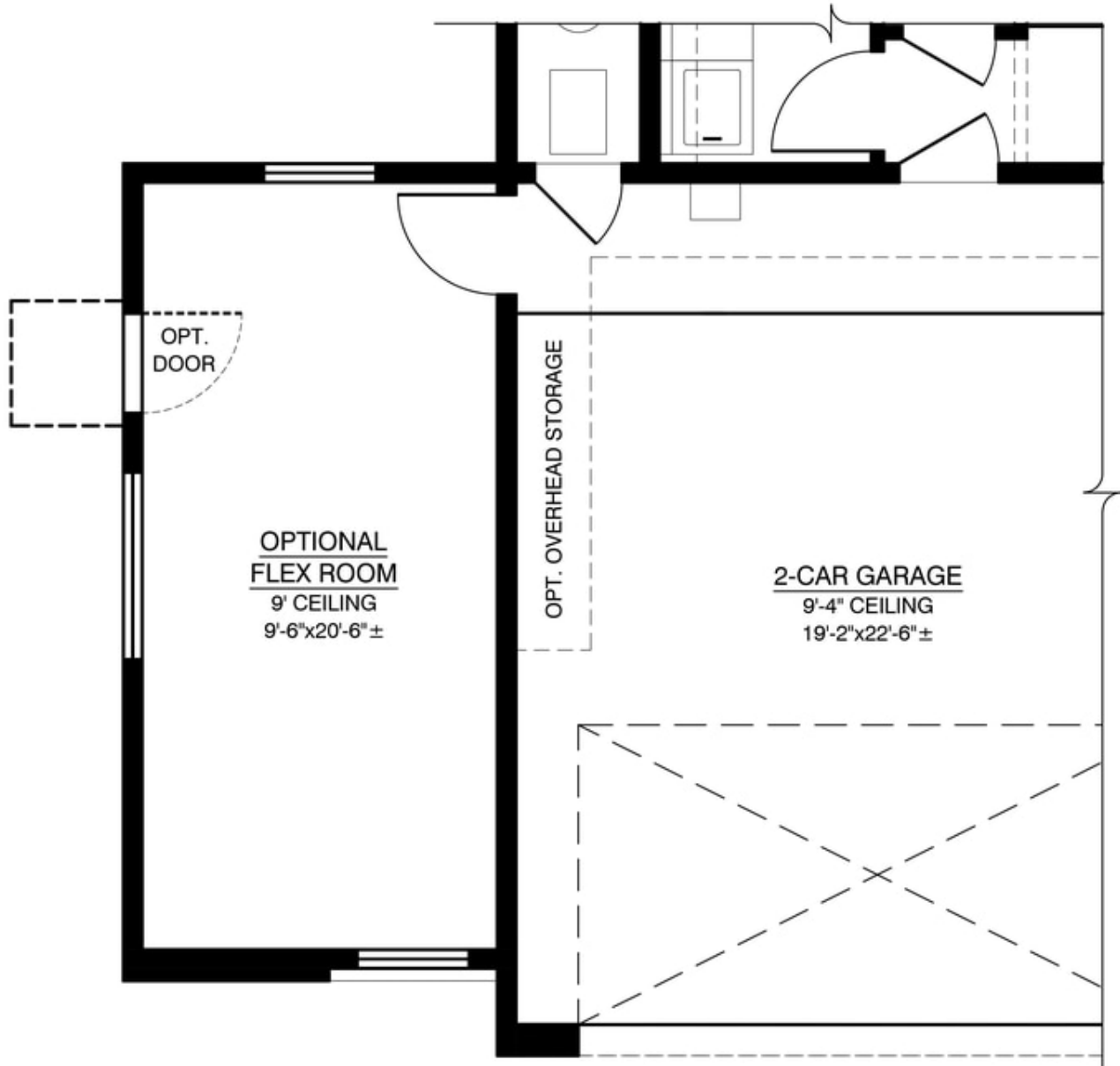


SINGLE FAMILY HOME

# Ixtapa

Available in 2 Communities

## Optional Flex Room



**FLOOR PLAN OPTIONAL FLEX ROOM**

Homes may be built in reverse of plans shown, depending on site conditions. Minor architectural changes may be made occasionally at the option of the builder. Printed material is not date stamped. Prices are subject to change. Please reference Abrazo Homes' website for most updated and accurate pricing and information. Please contact your Sales Consultant for details.

