



SINGLE FAMILY HOME

# 7527 Window Peak Rd

Albuquerque, NM 87114

NEW HOME SPECIALIST

Call Us @ (505) 510-4626

UNDER CONSTRUCTION



HOME PRICED AT  
**\$749,260**

**Plan:** The Tiffany with Casita

**Elevation:** Craftsman Elevation

 3,100 Sq. Ft.

 3 Bedrooms

 3.0 Bathrooms

Varying from tradition, our Tiffany (ready to be built) floor plan is not named for a Woman in history, but rather a brilliant company known for its exceptional designs. The first thing you might notice about the Tiffany is the grand foyer. Between the many options and the Jack and Jill bathroom, there are an infinite number of configurations for any household making this plan work for almost any family type. Our Tiffany floor plan was the 2015 winner for the best kitchen, bath and the premiere award for the Parade of Homes.

All square footage is approximate. Renderings are artist's conceptions and may vary slightly from the actual home. Homes may be built in reverse of plans shown, depending on site conditions. Minor architectural changes may be made occasionally at the option of the builder. Please contact your Sales Consultant for details.





SINGLE FAMILY HOME

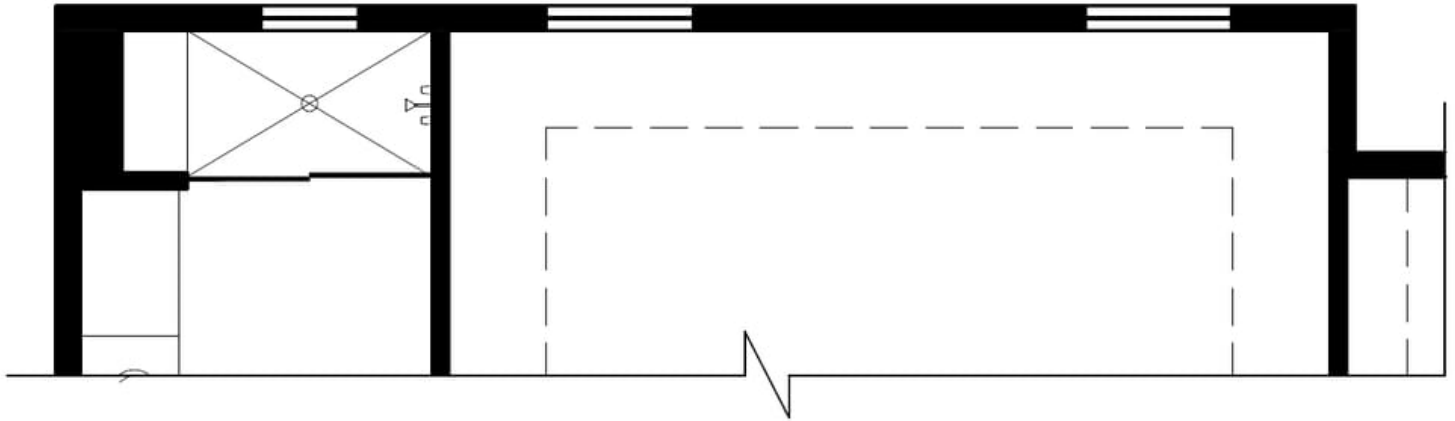
**7527 Window Peak Rd**

Albuquerque, NM 87114

**NEW HOME SPECIALIST**

Call Us @ (505) 510-4626

## Optional Expanded Owners Suite



**OPTIONAL EXPANDED OWNER'S SUITE:**

**ADDITIONAL HEATED AREA: 53.00 SQ. FT.**

All square footage is approximate. Renderings are artist's conceptions and may vary slightly from the actual home. Homes may be built in reverse of plans shown, depending on site conditions. Minor architectural changes may be made occasionally at the option of the builder. Please contact your Sales Consultant for details.



