



SINGLE FAMILY HOME

Pilsner

Mesa del Sol - Brewer's Series

NEW HOME SPECIALIST


Call Us @ 505-510-4626

blair@abrazohomes.com



PRICED FROM
\$459,950

2 Elevations Available

 1,852+ Sq. Ft.

 3 Bedrooms

 2 Bathrooms

 2 Car Garage

Introducing "The IPA," a single-story gem available in Craftsman or Northern New Mexican styles, complete with a welcoming front porch. Located in a unique alley-loaded community - Mesa del Sol, this home features three spacious bedrooms, two bathrooms, and an airy great room with vaulted ceilings that enhance the sense of openness.

The layout includes a large kitchen island and a smartly designed work center off the kitchen, optimizing space without sacrificing style. Enjoy outdoor living with a covered patio, with options for expansion to maximize New Mexico's beautiful weather. "The IPA" combines thoughtful design with functional living, ensuring no space is wasted. Experience the perfect blend of comfort and convenience in a home designed for modern living.



Craftsman Elevation



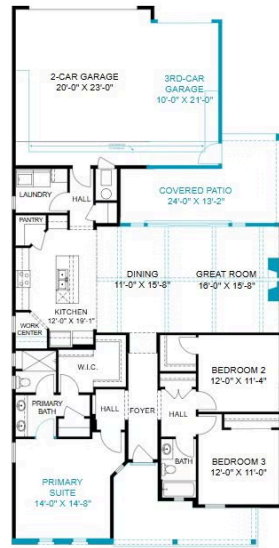
Northern New Mexican Elevation

Homes may be built in reverse of plans shown, depending on site conditions. Minor architectural changes may be made occasionally at the option of the builder. Printed material is not date stamped. Prices are subject to change. Please reference Abrazo Homes' website for most updated and accurate pricing and information. Please contact your Sales Consultant for details.





Pilsner_All Options



Homes may be built in reverse of plans shown, depending on site conditions. Minor architectural changes may be made occasionally at the option of the builder. Printed material is not date stamped. Prices are subject to change. Please reference Abrazo Homes' website for most updated and accurate pricing and information. Please contact your Sales Consultant for details.

