



SINGLE FAMILY HOME

Jane
Quivira Estates

NEW HOME SPECIALIST
Blair Bidwell-Duran
Call Us @ 505-510-4626
blair@abrazohomes.com



PRICED FROM
\$563,950

4 Elevations Available

- 2,038+ Sq. Ft.
- 3 Bedrooms
- 2 - 2.5 Bathrooms
- 2.5 Car Garage

Introducing the "Jane" floor plan, a single-story haven designed with an open concept, perfect for those who love to entertain. The heart of this home is a versatile work center, serving as an ideal 'drop zone' for mail and keys while doubling as a functional workspace. For added convenience, the work center can be transformed into an optional powder room. The plan boasts a primary suite with an oversized shower, a buffet in the dining area, and an expansive covered patio. Additionally, a tandem garage offers flexibility for conversion into a versatile flex space. In honor of Jane Addams, this home embodies a spirit of community and functionality.



2038_Jane_Mission_Tile_12.10.24



2038_Jane_Craftsman_Tile_12.10.24



Jane Craftsman Tile Roof

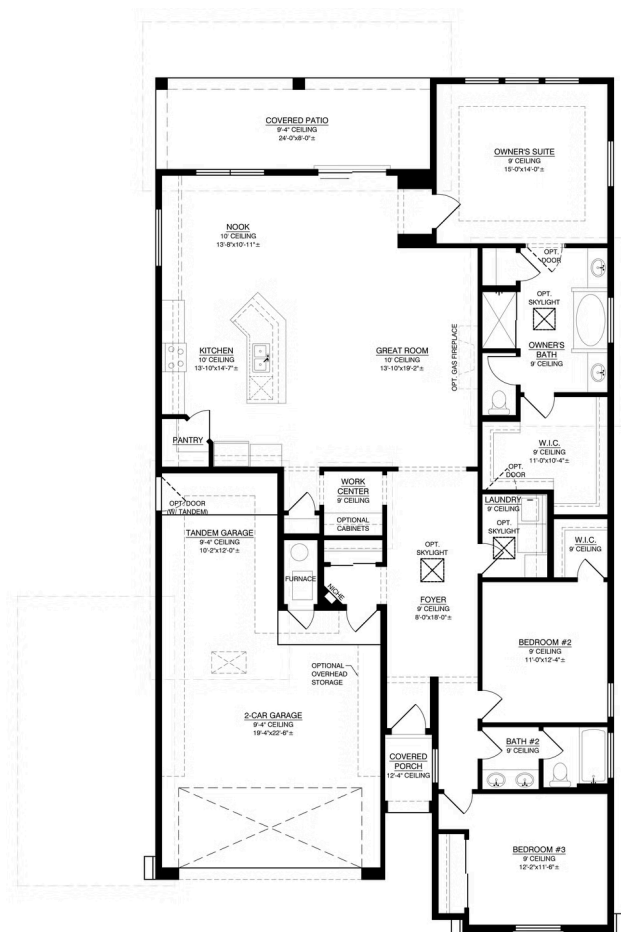


Jane Mission Tile Roof

Homes may be built in reverse of plans shown, depending on site conditions. Minor architectural changes may be made occasionally at the option of the builder. Printed material is not date stamped. Prices are subject to change. Please reference Abrazo Homes' website for most updated and accurate pricing and information. Please contact your Sales Consultant for details.



The Jane Floor Plan



Homes may be built in reverse of plans shown, depending on site conditions. Minor architectural changes may be made occasionally at the option of the builder. Printed material is not date stamped. Prices are subject to change. Please reference Abrazo Homes' website for most updated and accurate pricing and information. Please contact your Sales Consultant for details.

