



SINGLE FAMILY HOME

# The Tulum

Legacy at Sierra Vista

NEW HOME SPECIALIST


Call Us @ (505) 510-4626



PRICED FROM


# \$324,990

2 Elevations Available

 1,527+ Sq. Ft.

 3 Bedrooms

 2 Bathrooms

 2 Car Garage

Take it in... the salty breeze of the Caribbean Sea, the deep aroma of tropical flora and fauna, the coastal sunrise of the Riviera Maya. You have arrived in Tulum. This single-story, open-living concept with an optional flex room provides a ton of utility for post-pandemic lifestyles. Like the Mayan ruins of Tulum, this quiet beach town floor plan brings beauty and bold architecture together in perfect harmony.



Contemporary Elevation

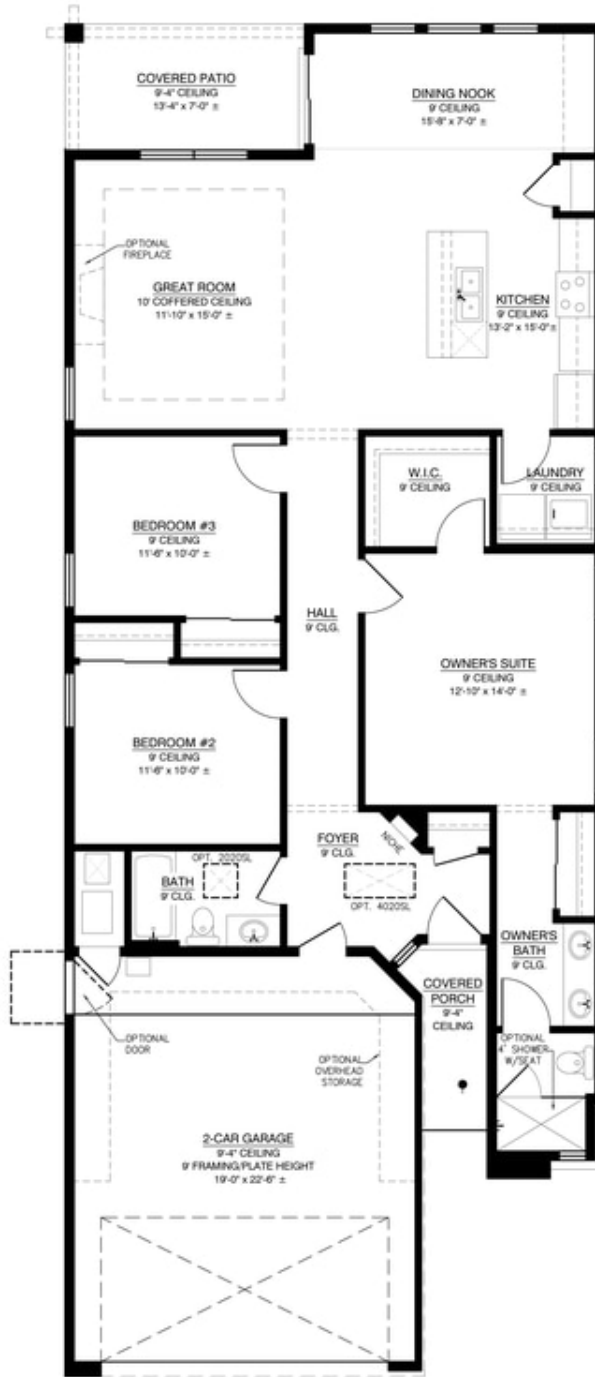


Tulum Modern Elevation

All square footage is approximate. Renderings are artist's conceptions and may vary slightly from the actual home. Homes may be built in reverse of plans shown, depending on site conditions. Minor architectural changes may be made occasionally at the option of the builder. Please contact your Sales Consultant for details.



## Tulum Floor Plan



All square footage is approximate. Renderings are artist's conceptions and may vary slightly from the actual home. Homes may be built in reverse of plans shown, depending on site conditions. Minor architectural changes may be made occasionally at the option of the builder. Please contact your Sales Consultant for details.