



NONE HOME

Coco II


Mil Colores at Fiesta





PRICED FROM


\$449,990

3 Elevations Available

 2,963+ Sq. Ft.

 5 - 6 Bedrooms

 2.5 - 4.5 Bathrooms

 2 Car Garage

Inspired by the elegance of Coco Chanel, the Coco II is a sophisticated and versatile 2-story home spanning 2,963 square feet up to 3,244. This spacious home features 5 bedrooms and 2.5 bathrooms, with options to expand up to 6 bedrooms and 4.5 bathrooms, catering to families of all sizes and needs. A 3rd car garage is also available as an option, offering even more convenience.

Designed with flexibility in mind, the Coco II is perfect for multigenerational households or those seeking ample living space. The open-concept layout provides a seamless flow between living areas, while private retreats ensure comfort for every member of the household. This home combines luxury and practicality, making it a timeless choice for modern living.



FRONT 'BASE' ELEVATION

Coco II Mission



FRONT OPT. 'CRAFTSMAN' ELEVATION

Coco II Craftsman

Homes may be built in reverse of plans shown, depending on site conditions. Minor architectural changes may be made occasionally at the option of the builder. Printed material is not date stamped. Prices are subject to change. Please reference Abrazo Homes' website for most updated and accurate pricing and information. Please contact your Sales Consultant for details.



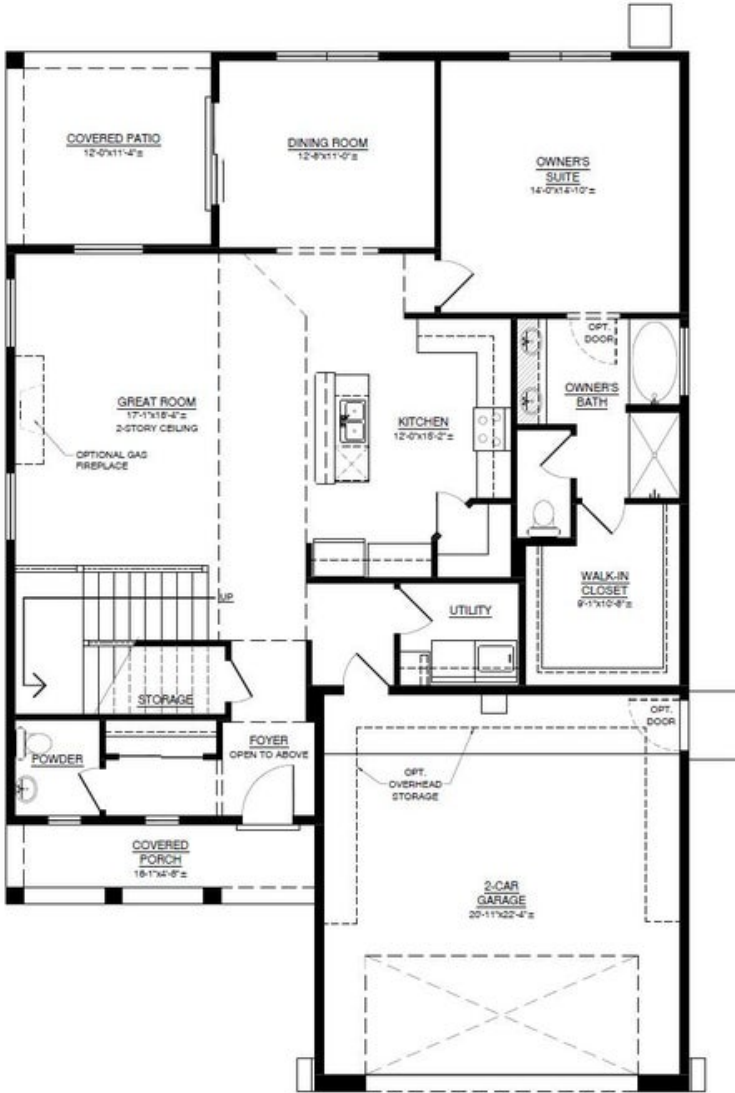


NONE HOME

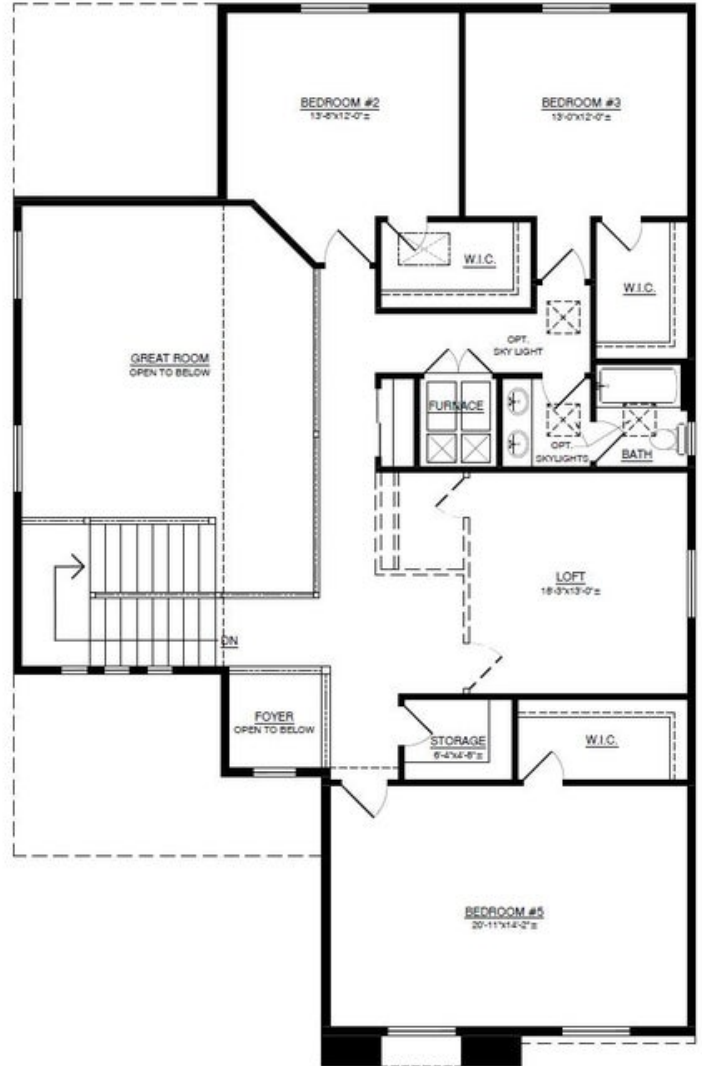
Coco II

Mil Colores at Fiesta

Coco II Base Floor Plan



FIRST FLOOR



SECOND FLOOR

Homes may be built in reverse of plans shown, depending on site conditions. Minor architectural changes may be made occasionally at the option of the builder. Printed material is not date stamped. Prices are subject to change. Please reference Abrazo Homes' website for most updated and accurate pricing and information. Please contact your Sales Consultant for details.



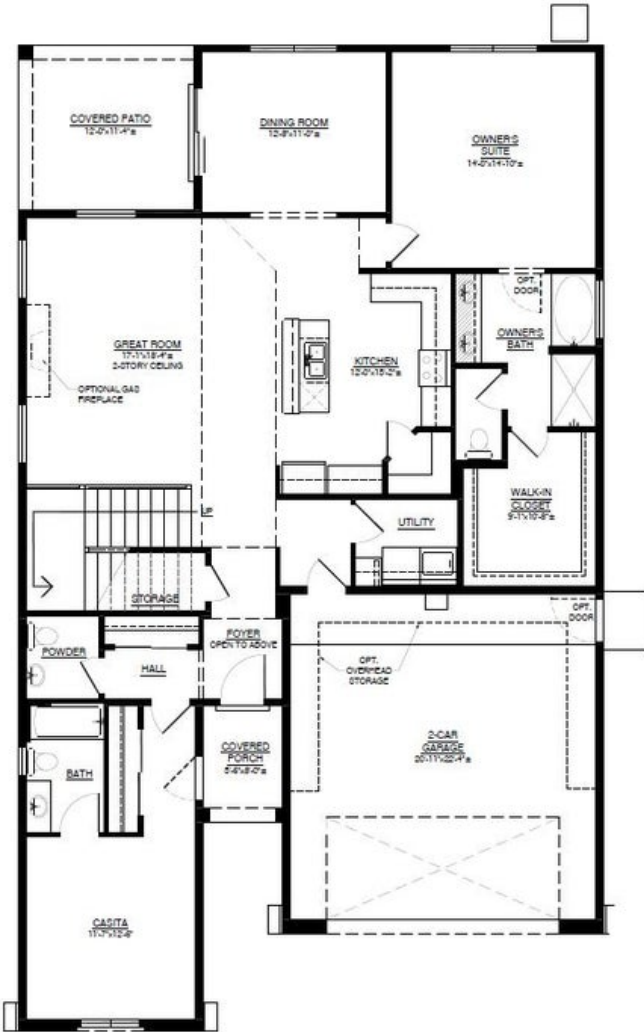


NONE HOME

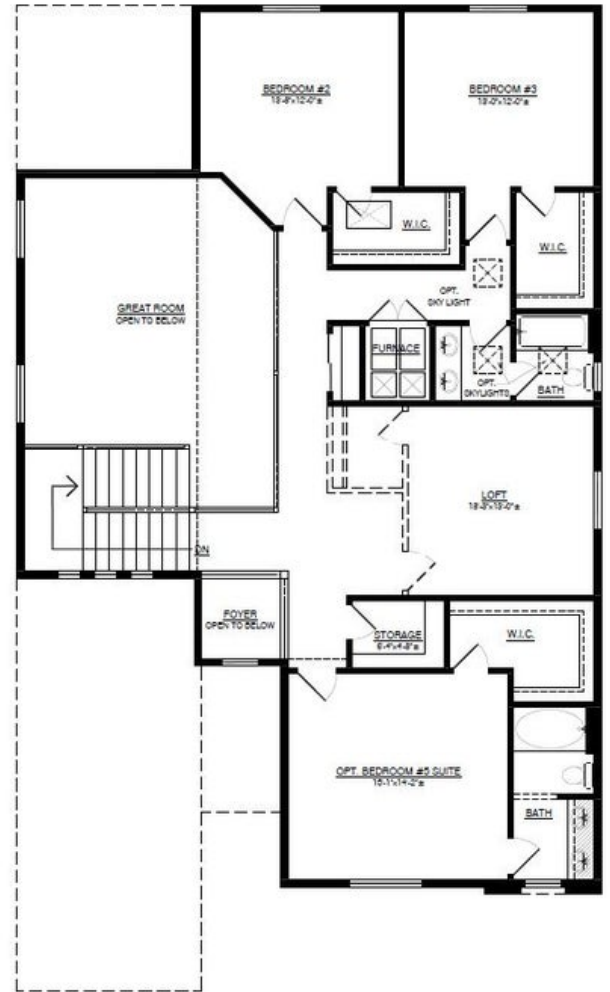
Coco II

Mil Colores at Fiesta

Coco II Options: Casita; 5th Bedroom Suite



FIRST FLOOR W/OPT. CASITA



SECOND FLOOR W/OPT. BEDROOM #5 SUITE

Homes may be built in reverse of plans shown, depending on site conditions. Minor architectural changes may be made occasionally at the option of the builder. Printed material is not date stamped. Prices are subject to change. Please reference Abrazo Homes' website for most updated and accurate pricing and information. Please contact your Sales Consultant for details.

