



SINGLE FAMILY HOME

# The Marilyn

Rancho Valencia


NEW HOME SPECIALIST

Call Us @ 505-510-4626




## Call for Price

2 Elevations Available

 2,303+ Sq. Ft.

 3 Bedrooms

 2.5 Bathrooms

 2 Car Garage

Step into our single-story ranch-style home, designed for effortless living and entertaining. This ready-to-build Marilyn II open floor plan seamlessly connects a spacious great room to a modern kitchen, creating the perfect space for gatherings. With three bedrooms plus a flexible room, there's ample space for family or guests. Expand your living space with the option for a great room extension and enjoy outdoor living on the large expanded patio available in many of our communities. Welcome to a home that combines style with practicality.



Mission Elevation

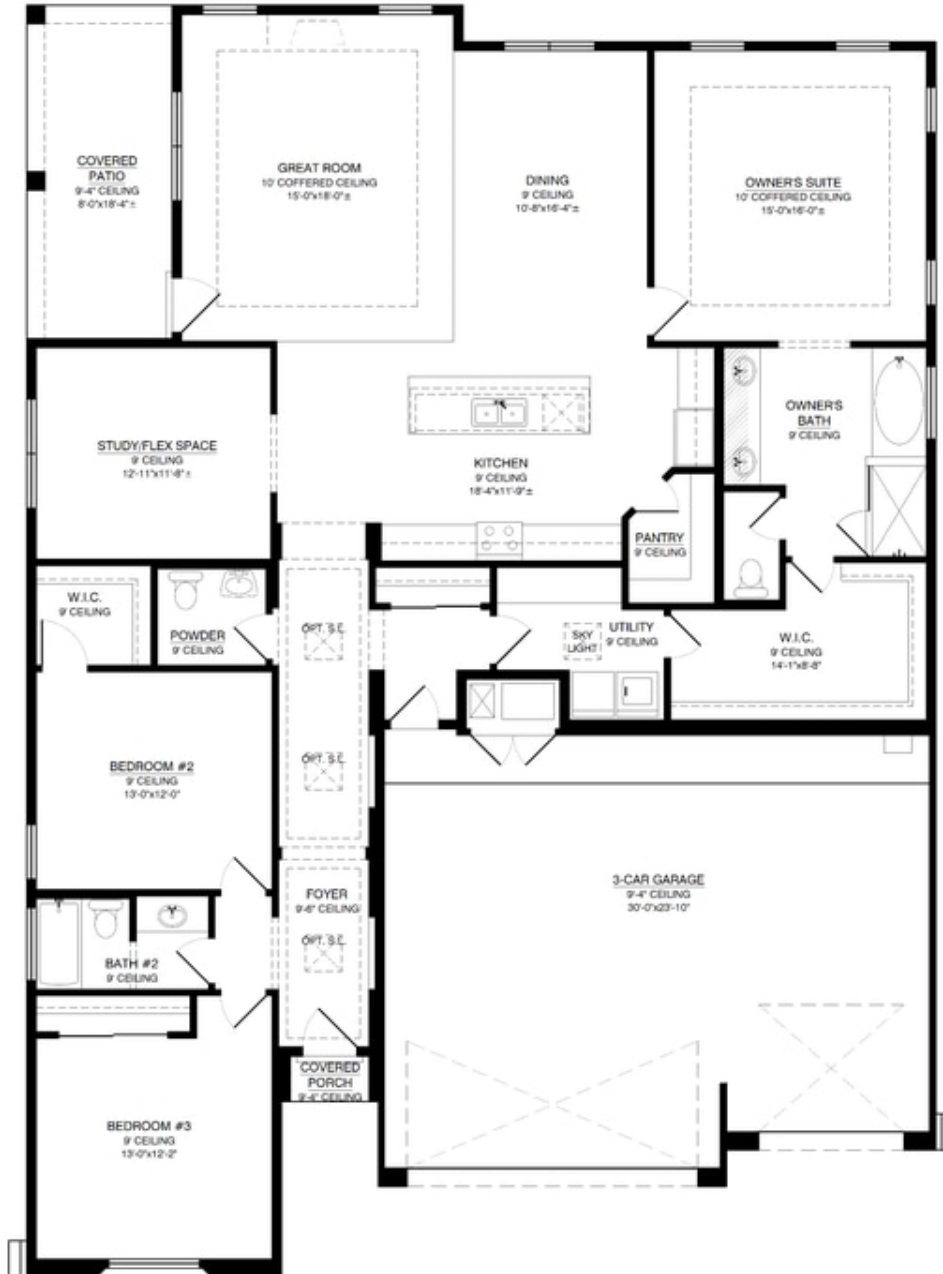


Craftsman Elevation

Homes may be built in reverse of plans shown, depending on site conditions. Minor architectural changes may be made occasionally at the option of the builder. Printed material is not date stamped. Prices are subject to change. Please reference Abrazo Homes' website for most updated and accurate pricing and information. Please contact your Sales Consultant for details.



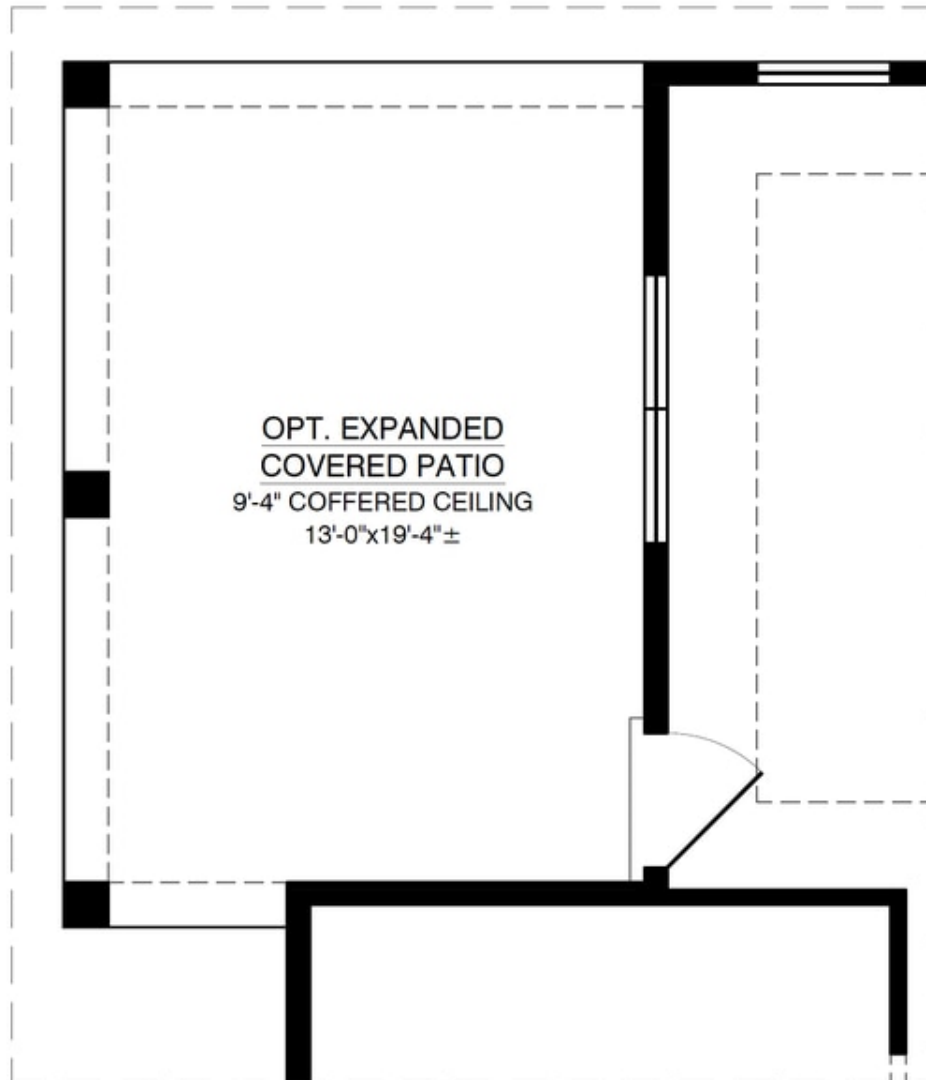
## The Marilyn Floor Plan



FLOOR PLAN

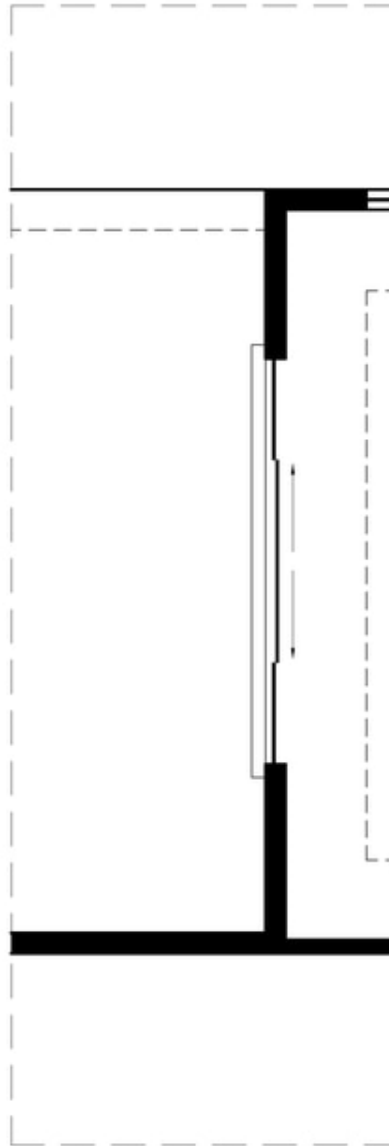
Homes may be built in reverse of plans shown, depending on site conditions. Minor architectural changes may be made occasionally at the option of the builder. Printed material is not date stamped. Prices are subject to change. Please reference Abrazo Homes' website for most updated and accurate pricing and information. Please contact your Sales Consultant for details.

## Optional Patio Expansion



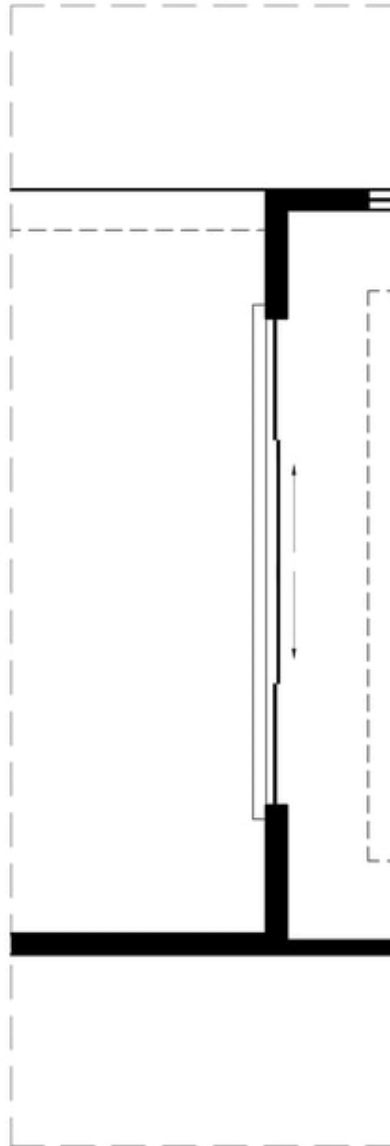
**OPTIONAL PATIO EXPANSION**  
**ADDITIONAL 96.65 SQ. FT. (UNHEATED):**

## Optional 10ft Sliding Glass Door



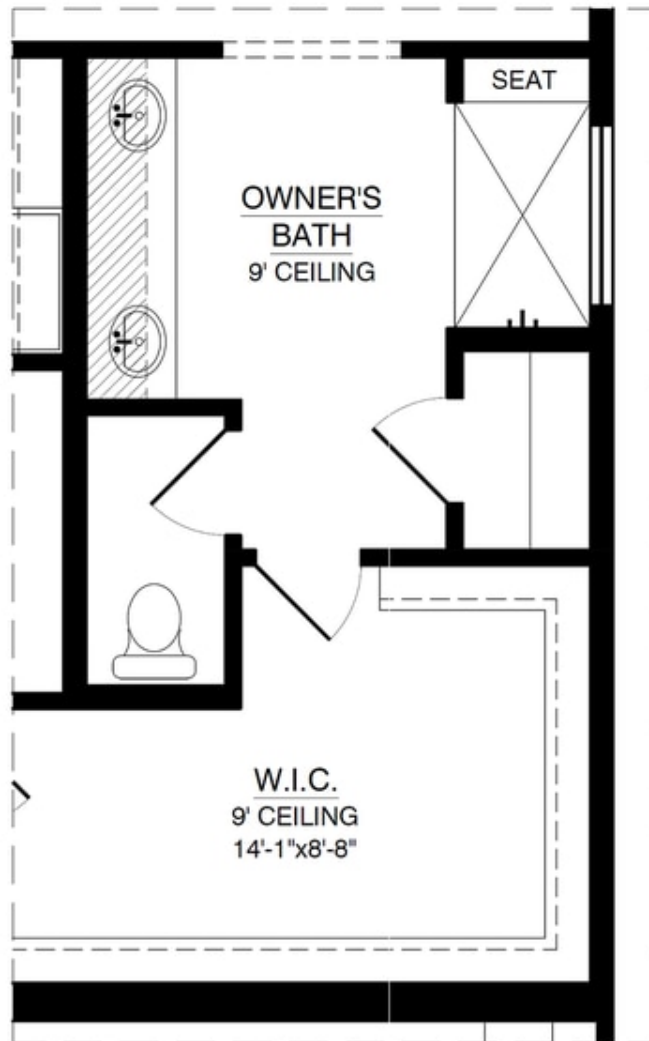
### OPT. 10' WIDE SLIDING GLASS DOOR

## Optional 12ft Sliding Glass Door



### OPT. 12' WIDE SLIDING GLASS DOOR

## Optional Owners Suite Bath



## OPT. OWNER'S SUITE BATH