



SINGLE FAMILY HOME

The Ruth

Rancho Valencia

NEW HOME SPECIALIST

Call Us @ 505-510-4626



Call for Price

2 Elevations Available



1,750+ Sq. Ft.



3 - 4 Bedrooms



2 Bathrooms



2 Car Garage

The "Ruth" floor plan boasts an open concept to maximize views and enhance entertainment. Elevated ceilings adorn the primary bedroom and great room, while the garage features a dedicated workspace. This flexible layout accommodates either a 2-bedroom with a study or a 3-bedroom plan, this home seamlessly blends style and functionality. Named in honor of Ruth Bader Ginsburg, this home pays tribute to her remarkable legacy.



Mission Elevation



Craftsman Elevation

Homes may be built in reverse of plans shown, depending on site conditions. Minor architectural changes may be made occasionally at the option of the builder. Printed material is not date stamped. Prices are subject to change. Please reference Abrazo Homes' website for most updated and accurate pricing and information. Please contact your Sales Consultant for details.





SINGLE FAMILY HOME

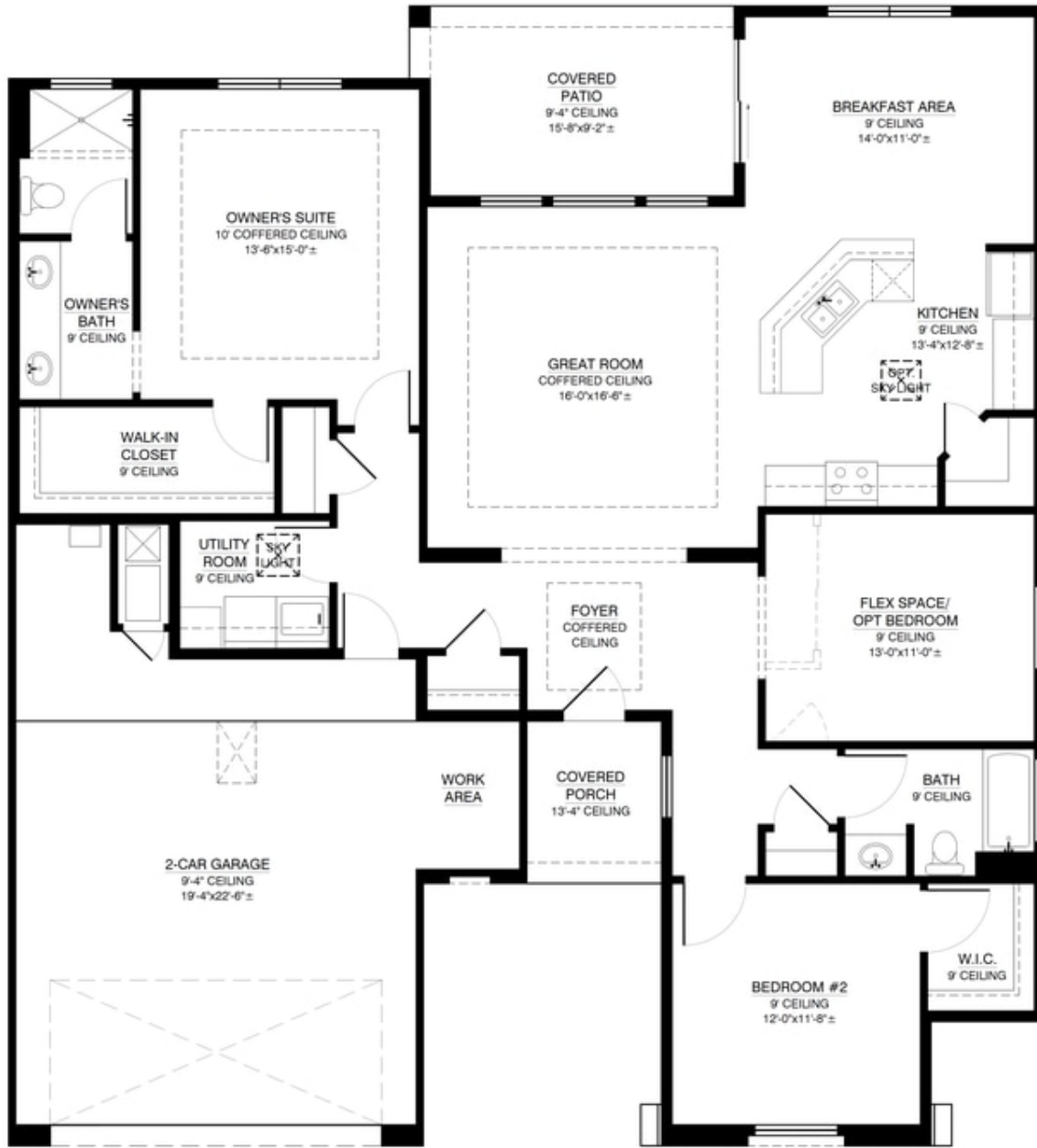
The Ruth

Rancho Valencia

NEW HOME SPECIALIST

Call Us @ 505-510-4626

The Anne Floor Plan

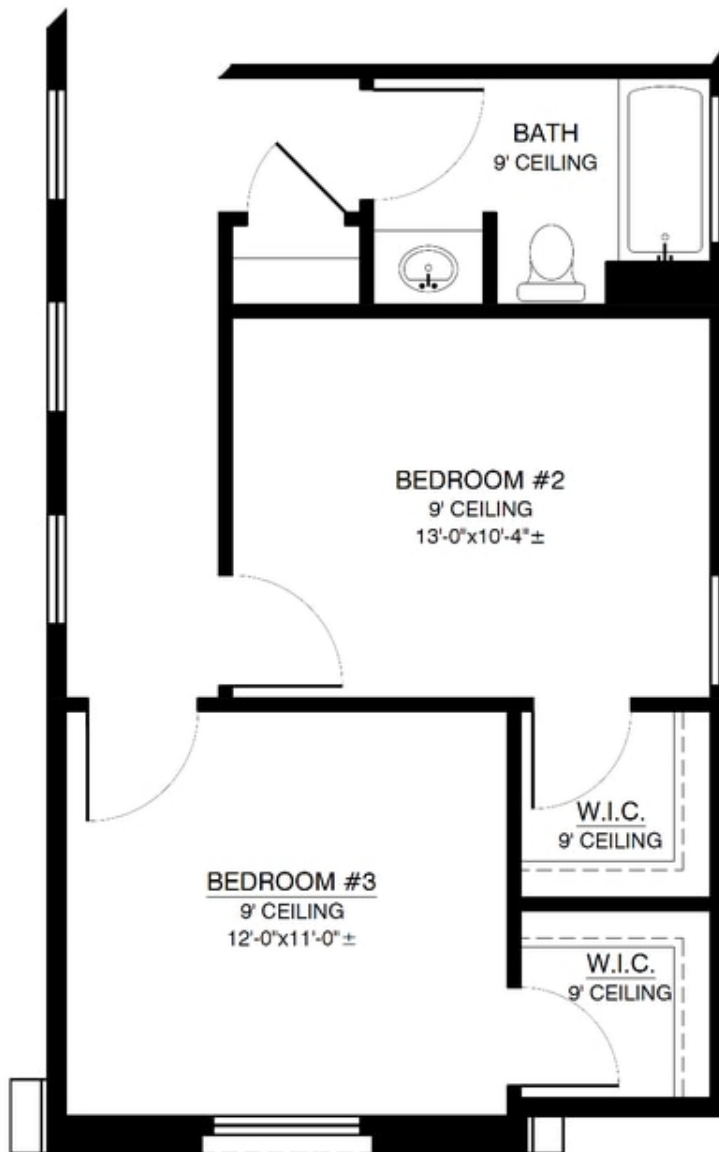


FIRST FLOOR

Homes may be built in reverse of plans shown, depending on site conditions. Minor architectural changes may be made occasionally at the option of the builder. Printed material is not date stamped. Prices are subject to change. Please reference Abrazo Homes' website for most updated and accurate pricing and information. Please contact your Sales Consultant for details.

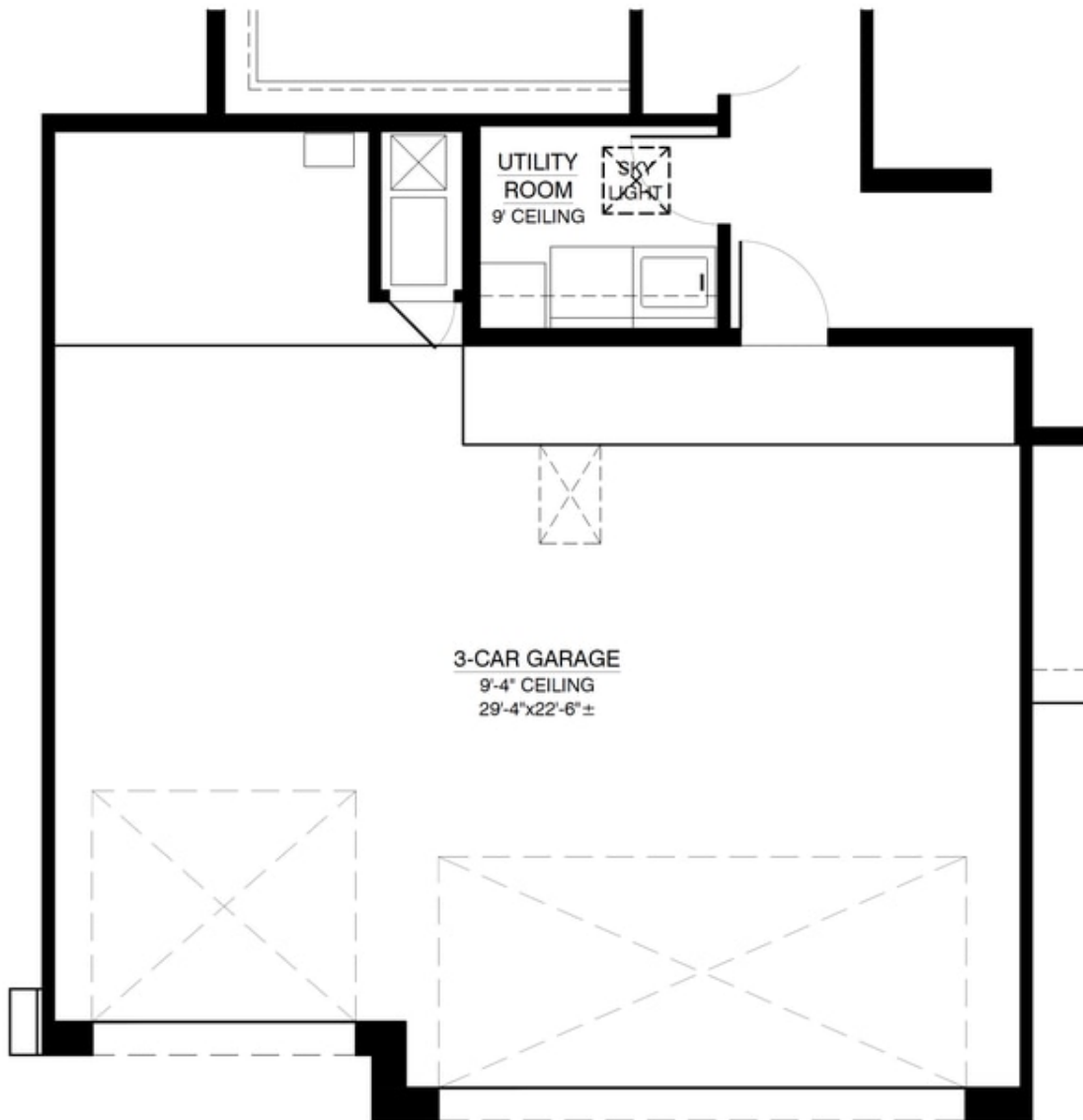


The Anne Optional 3rd Bedroom



OPT 3 BEDROOM
ADDITIONAL 218.08 SQ.FT. (HEATED SPACE)

The Anne Optional 3rd Car Garage



OPT 3 CAR GARAGE
ADDITIONAL 210.34 SQ. FT. (UNHEATED SPACE)
SUBTRACT 14.5 SQ. FT (HEATED SPACE)