



SINGLE FAMILY HOME

4836 Guadalupe Peak ST

Los Lunas, NM 87031

UNDER CONSTRUCTION




HOME PRICED AT

\$432,765

Plan: The Tabitha II

Elevation: Tabitha II Mission 3
Car Shingle Roof

 1,902 Sq. Ft.

 4 Bedrooms

 2.0 Bathrooms

Homes may be built in reverse of plans shown, depending on site conditions. Minor architectural changes may be made occasionally at the option of the builder. Printed material is not date stamped. Prices are subject to change. Please reference Abrazo Homes' website for most updated and accurate pricing and information. Please contact your Sales Consultant for details.



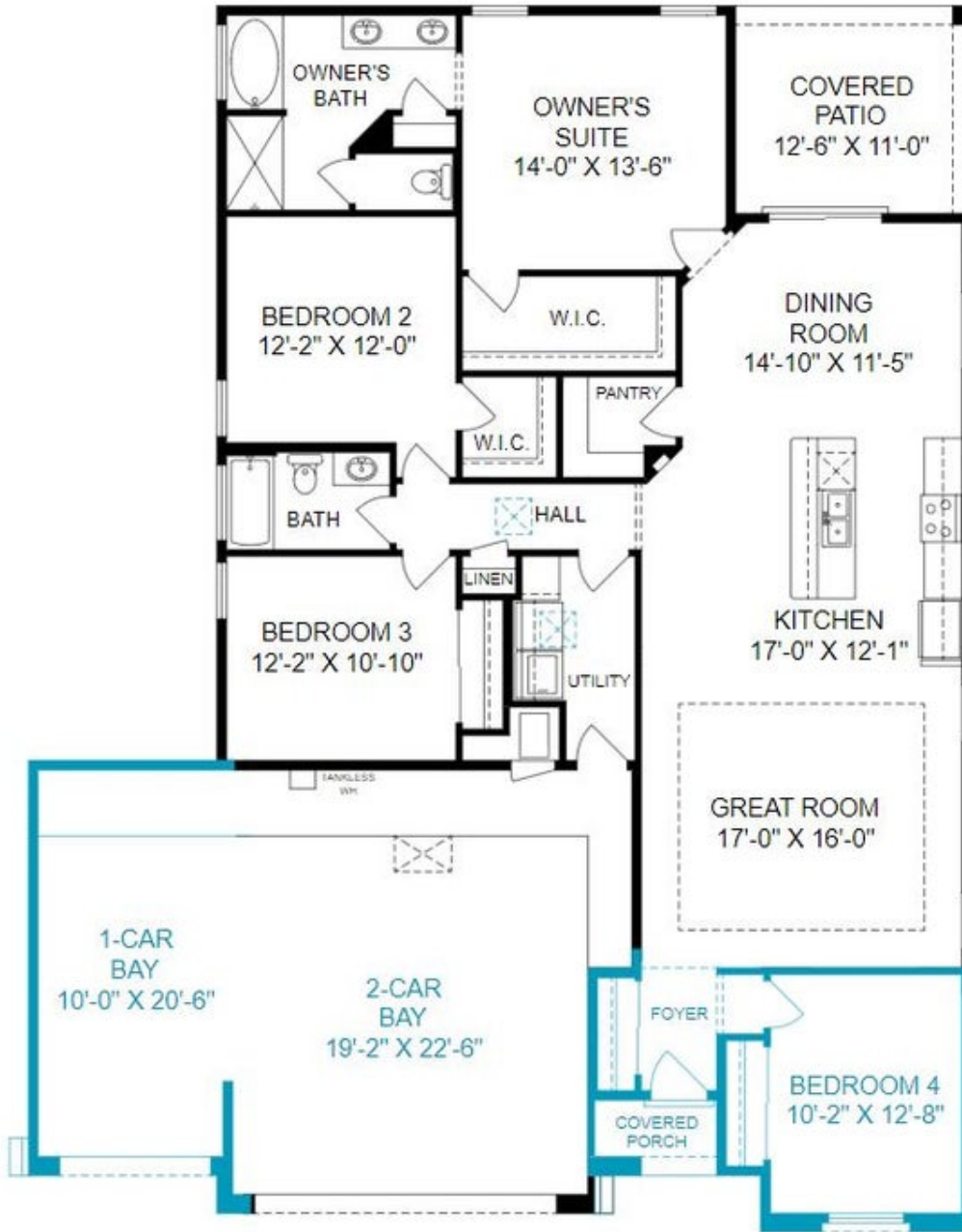


SINGLE FAMILY HOME

4836 Guadalupe Peak ST

Los Lunas, NM 87031

[Click Here](#)



Homes may be built in reverse of plans shown, depending on site conditions. Minor architectural changes may be made occasionally at the option of the builder. Printed material is not date stamped. Prices are subject to change. Please reference Abrazo Homes' website for most updated and accurate pricing and information. Please contact your Sales Consultant for details.

