



SINGLE FAMILY HOME

# The Audrey II

Vista Manzano



PRICED FROM

## \$418,980

3 Elevations Available



2,075+ Sq. Ft.



3 - 4 Bedrooms



2.5 - 3 Bathrooms



2 Car Garage

Presenting the "Audrey II" floor plan, a stylish and flexible design perfect for gatherings. With a large open layout, this home effortlessly accommodates socializing. Featuring spacious secondary bedrooms, the plan allows the third bay to transform into a dining room or bedroom. Expand the great room for added versatility. The dining area exudes pseudo-formal charm, and the primary suite closet connects conveniently to the utility room. This flexible plan can adapt to include a fourth bedroom and extra garage storage. In honor of Audrey Hepburn, the "Audrey II" blends elegance and adaptability for a timeless living space.



Audrey II Mission Shingle Roof



Audrey II Craftsman w/out Stone Shingle Roof



Audrey II Craftsman Shingle Roof

Homes may be built in reverse of plans shown, depending on site conditions. Minor architectural changes may be made occasionally at the option of the builder. Printed material is not date stamped. Prices are subject to change. Please reference Abrazo Homes' website for most updated and accurate pricing and information. Please contact your Sales Consultant for details.



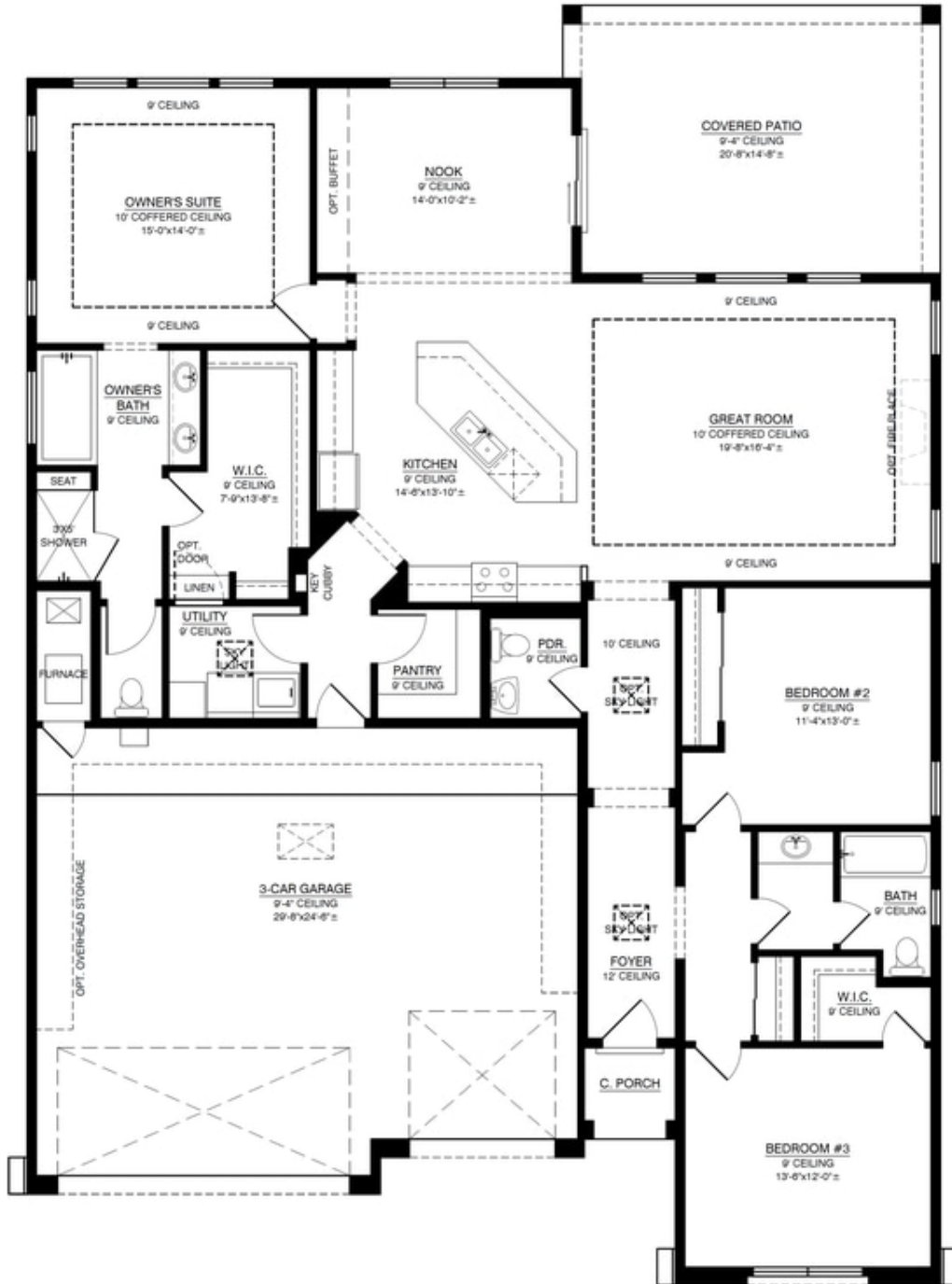


SINGLE FAMILY HOME

# The Audrey II

Vista Manzano

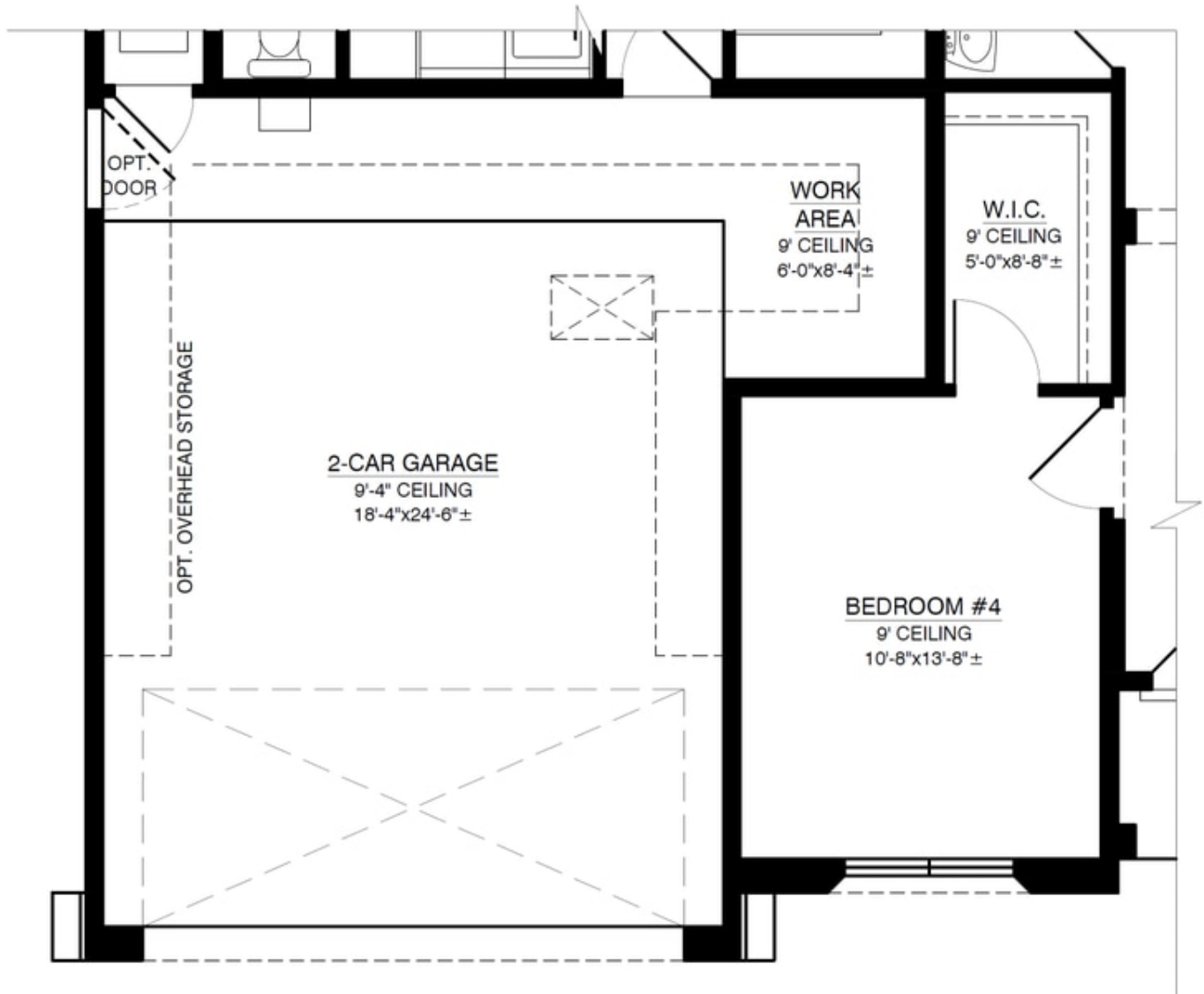
## Audrey II Floorplan



Homes may be built in reverse of plans shown, depending on site conditions. Minor architectural changes may be made occasionally at the option of the builder. Printed material is not date stamped. Prices are subject to change. Please reference Abrazo Homes' website for most updated and accurate pricing and information. Please contact your Sales Consultant for details.



## Optional 4th Bedroom

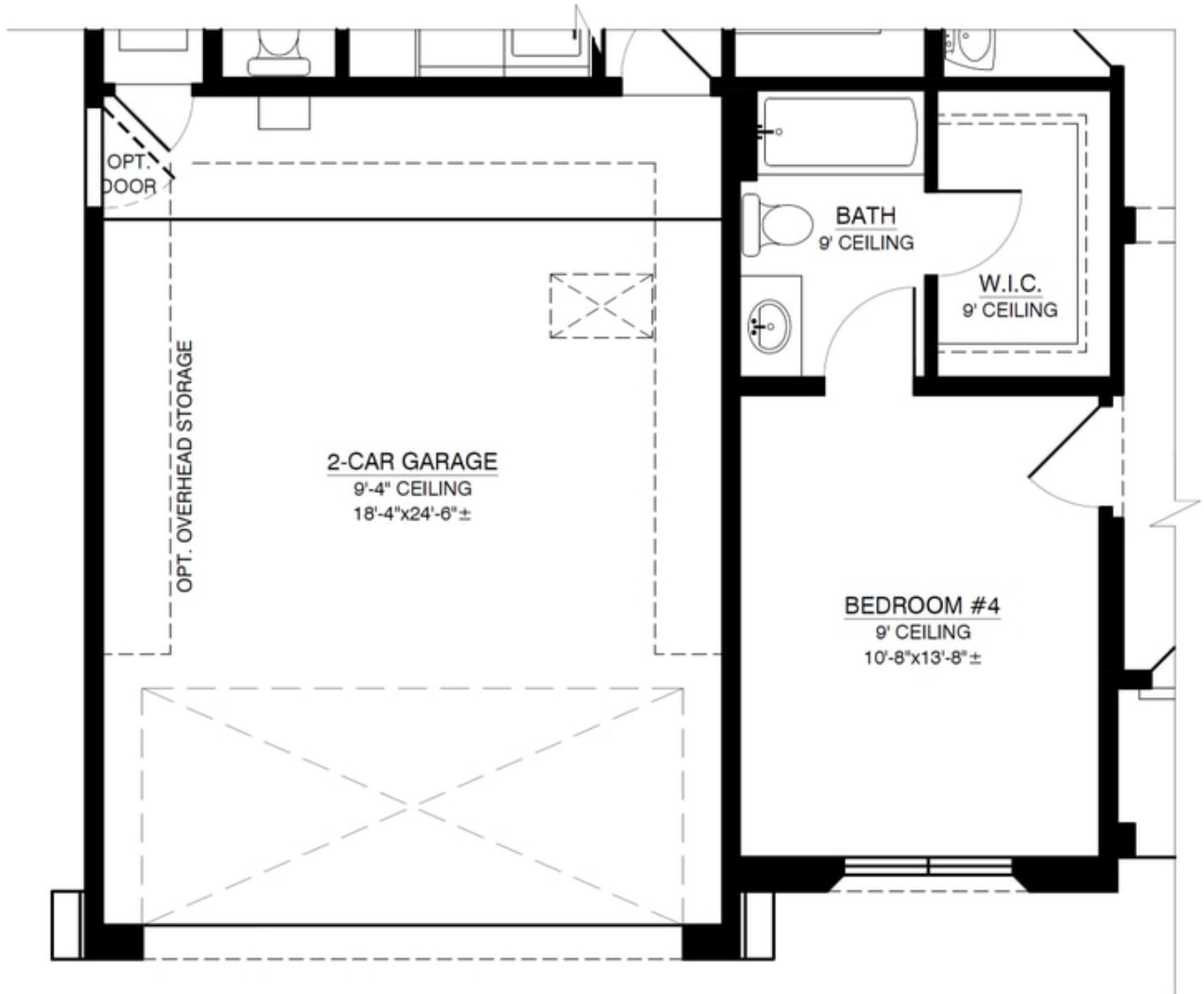


### OPTIONAL BEDROOM #4

ADDITIONAL 218.33 SQ. FT. (HEATED)

SUBTRACT 218.33 SQ. FT. (UNHEATED)

## Optional Bedroom Suite



**OPTIONAL BEDROOM SUITE**  
**ADDITIONAL 268.33 SQ. FT. (HEATED)**  
**SUBTRACT 168.33 SQ. FT. (UNHEATED)**