



SINGLE FAMILY HOME

The Loreto

Las Residencias

NEW HOME SPECIALIST


Call Us @ (505) 510-4626



PRICED FROM


\$400,980

5 Elevations Available

 2,102+ Sq. Ft.

 3 - 4 Bedrooms

 2.5 Bathrooms

 2 Car Garage

The laidback energy that draws visitors to the Pueblo Magico (Magic Town) year after year makes Loreto, Mexico the place to go for a relaxing and rejuvenating trip. Much like this Baja California Sur beach town, the Loreto floor plan is a staycation awaiting your arrival. The front balcony off of the owner's suite gives that experience of waking up each day to a postcard-like view. This home maximizes every inch of usable space and is one of the most popular plans from this lineup.



Contemporary Elevation with flex room



Contemporary Elevation



Modern Elevation with 3rd car garage



Modern Elevation with open deck

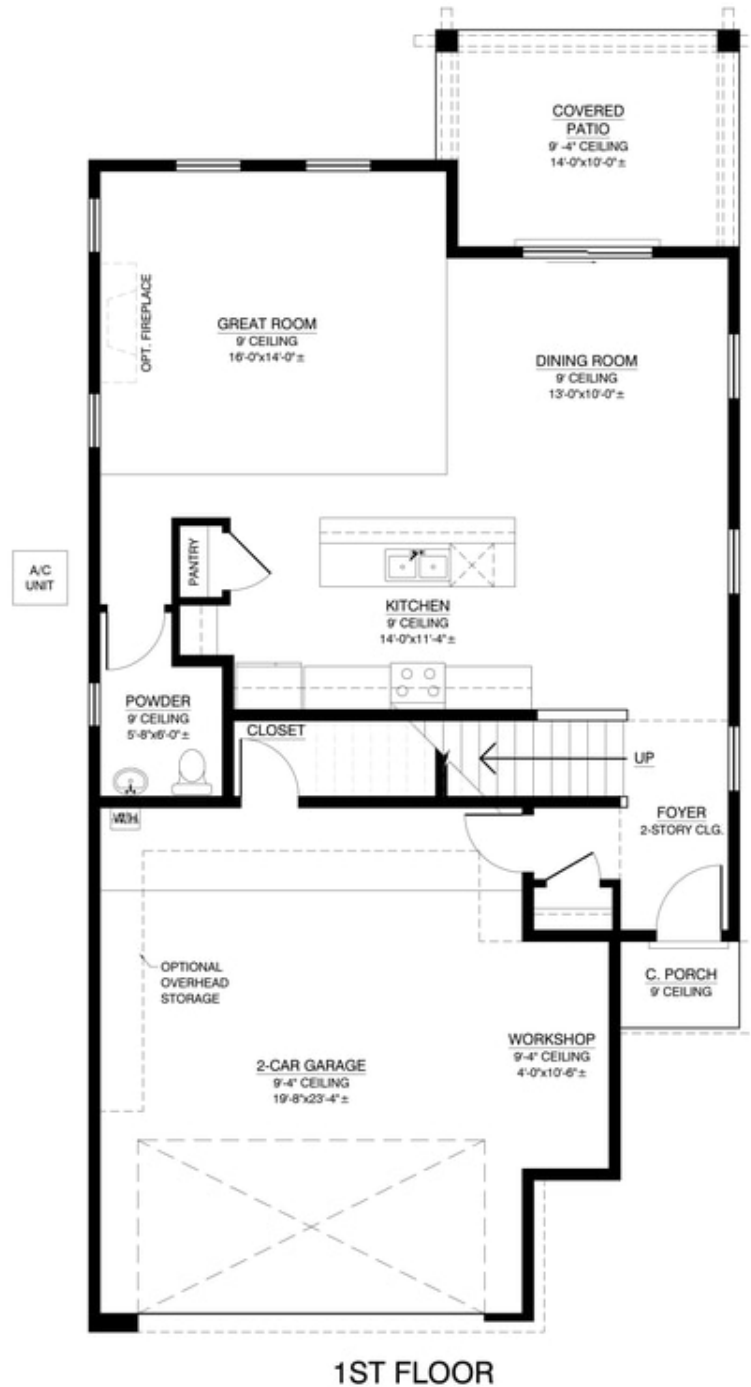


Modern Elevation

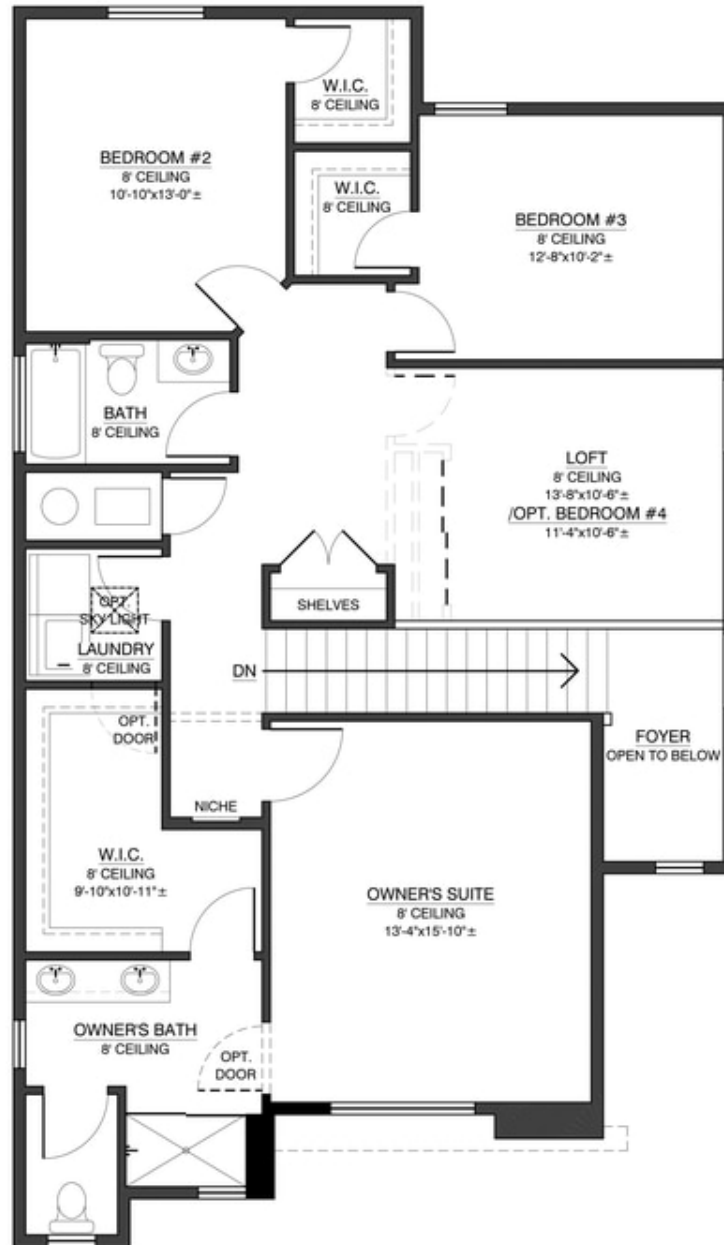
Homes may be built in reverse of plans shown, depending on site conditions. Minor architectural changes may be made occasionally at the option of the builder. Printed material is not date stamped. Prices are subject to change. Please reference Abrazo Homes' website for most updated and accurate pricing and information. Please contact your Sales Consultant for details.



First Floor

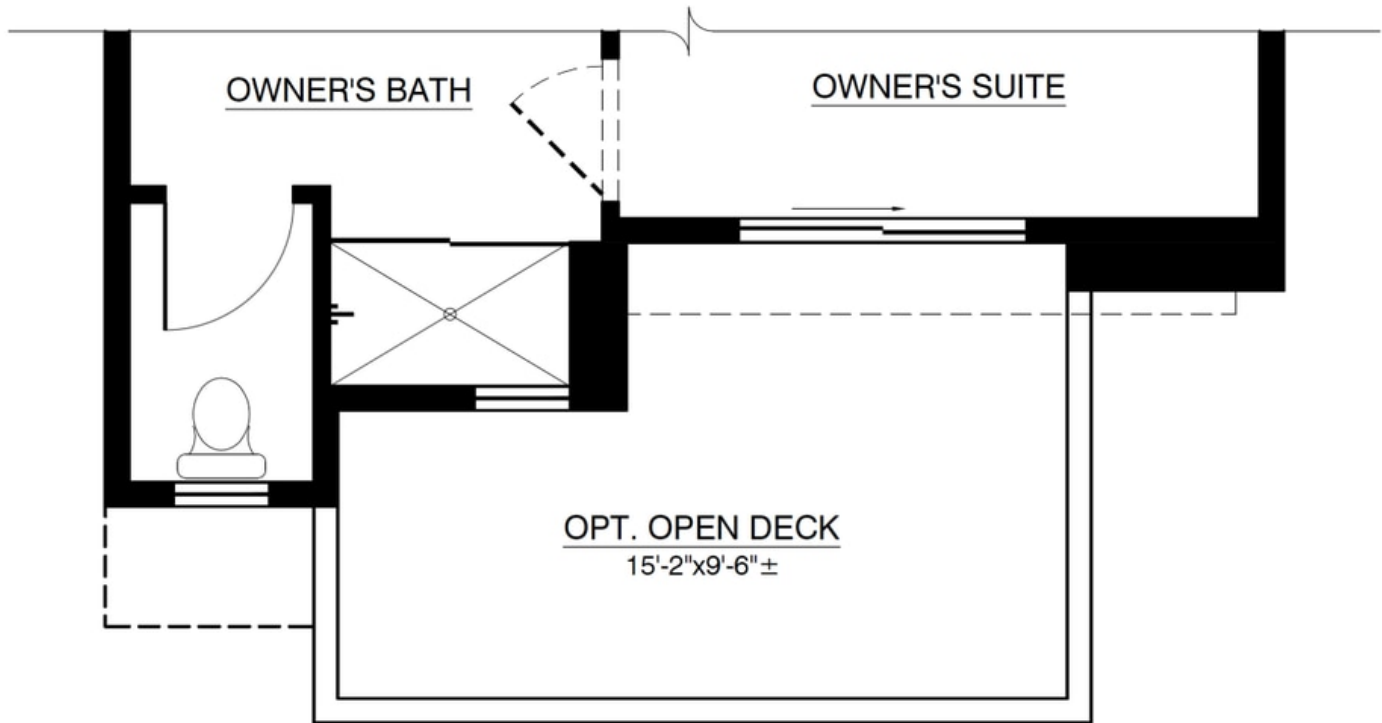


Second Floor



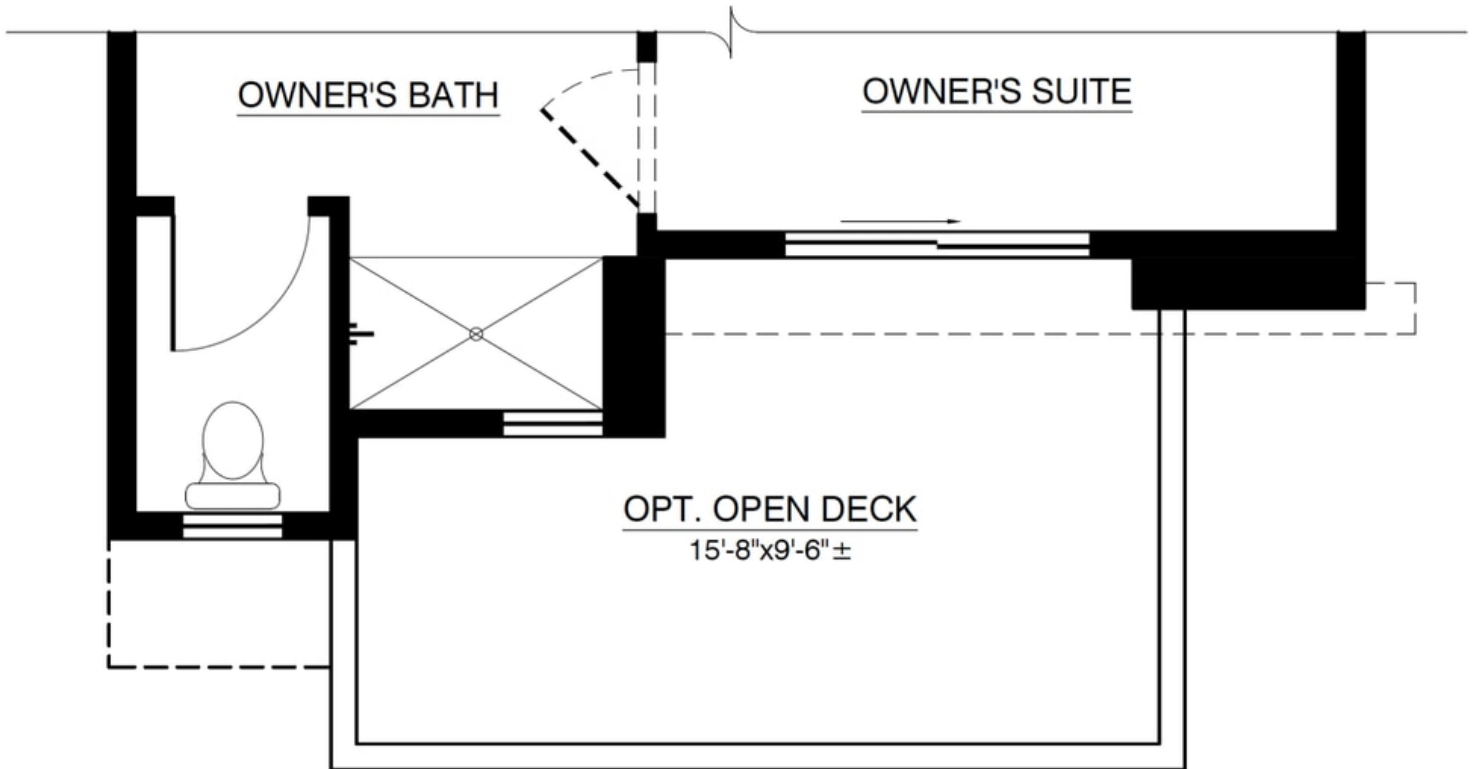
2ND FLOOR

Optional Open Deck With Contemporary Elevation



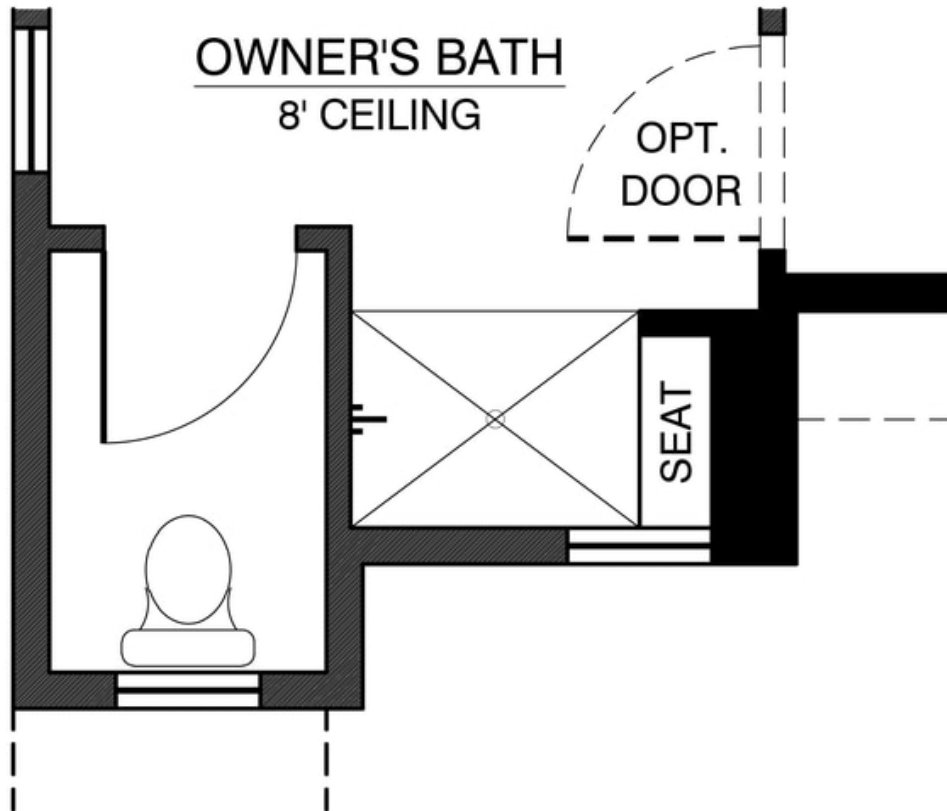
OPT. OPEN DECK
W/ OPT. "S.W. CONTEMPORARY ELEV."
ADDITIONAL 137.42 SQ.FT. (UNHEATED)

Optional Open Deck With Modern Elevation



OPT. OPEN DECK
W/ "MODERN ELEV."
ADDITIONAL 141.92 SQ.FT. (UNHEATED)

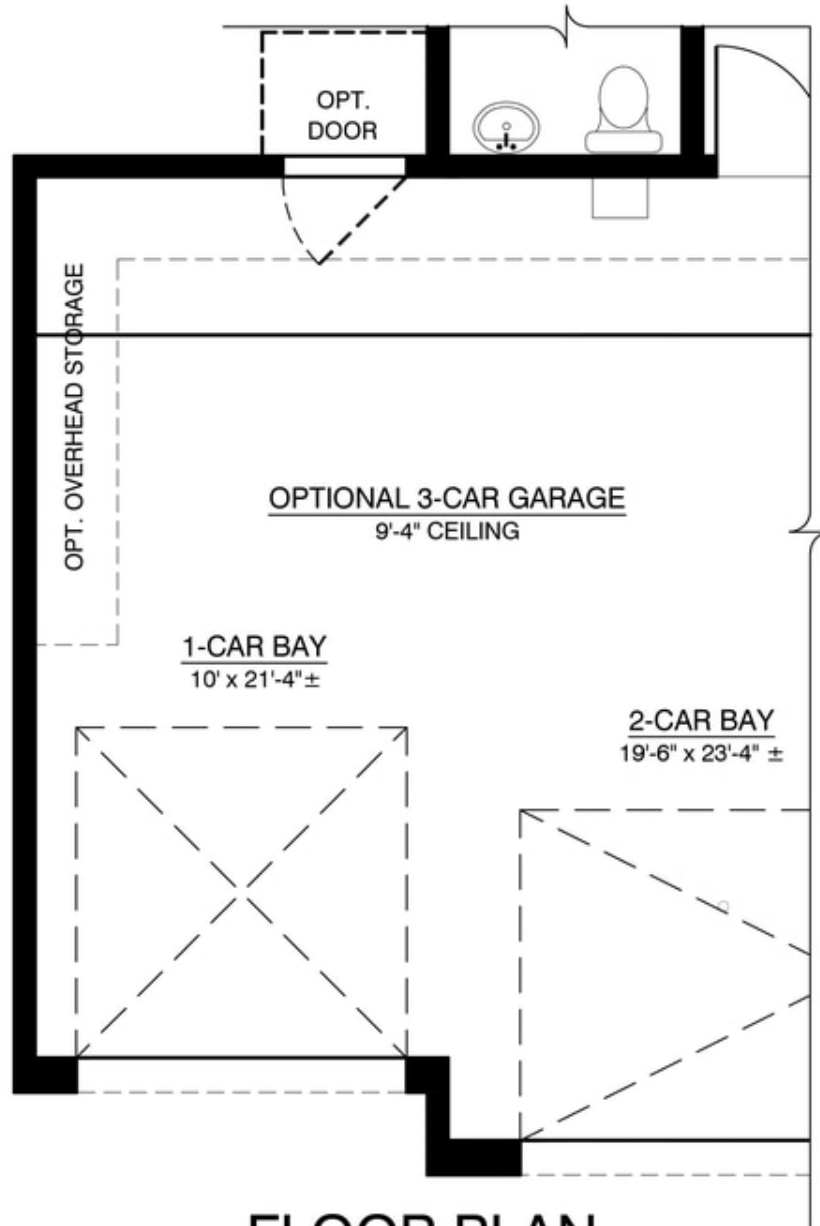
Optional Owners Suite Shower



OPT. 4' SHOWER W/ SEAT

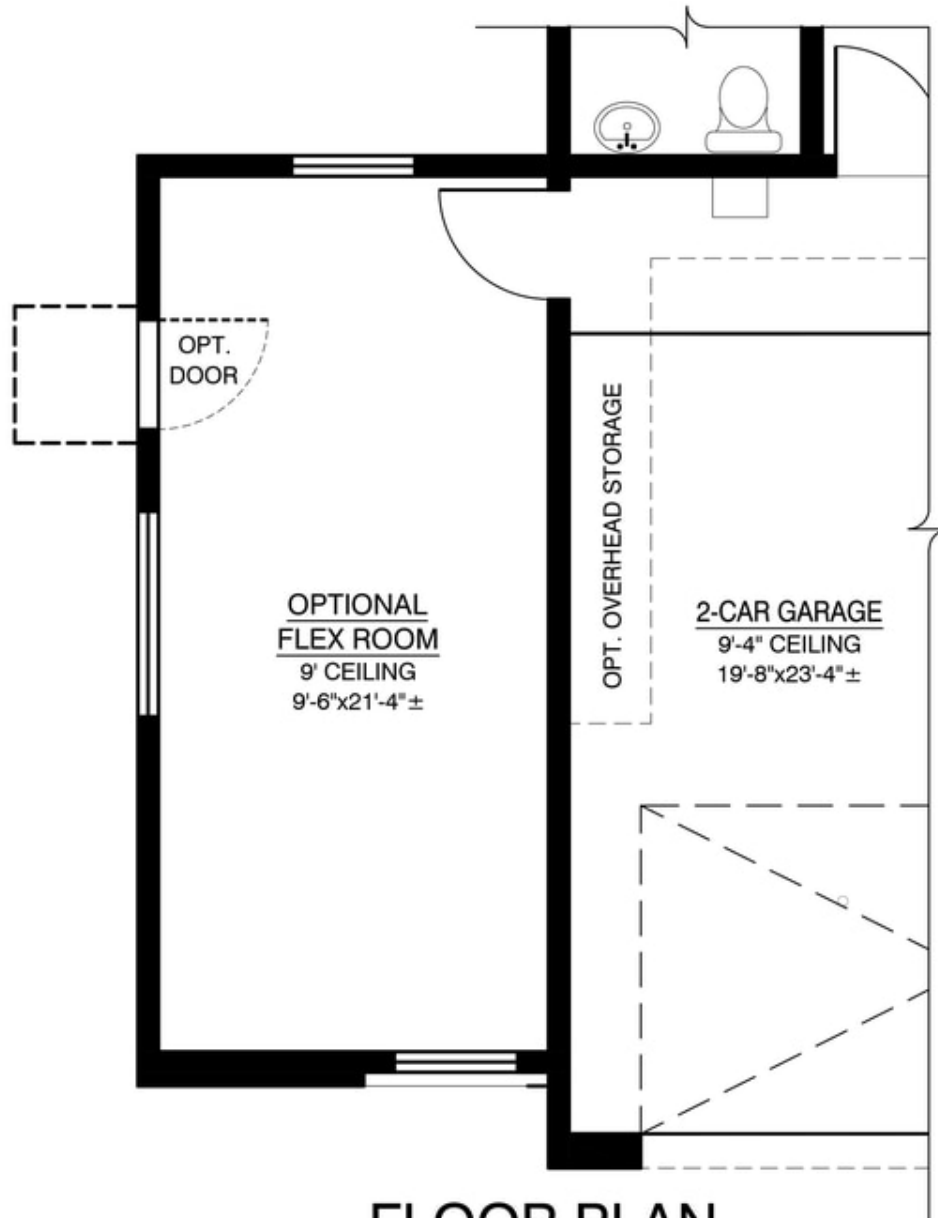
NO CHANGE IN SQUARE FOOTAGE

Optional 3rd Car Garage



FLOOR PLAN OPTIONAL 3-CAR GARAGE

Optional Flex Room



FLOOR PLAN
OPTIONAL FLEX ROOM