



SINGLE FAMILY HOME

The Tulum

Las Residencias

NEW HOME SPECIALIST


Call Us @ (505) 510-4626



PRICED FROM

\$361,980

4 Elevations Available

 1,527+ Sq. Ft.

 3 Bedrooms

 2 Bathrooms

 2 Car Garage

Take it in... the salty breeze of the Caribbean Sea, the deep aroma of tropical flora and fauna, the coastal sunrise of the Riviera Maya. You have arrived in Tulum. This single-story, open-living concept with an optional flex room provides a ton of utility for post-pandemic lifestyles. Like the Mayan ruins of Tulum, this quiet beach town floor plan brings beauty and bold architecture together in perfect harmony.



Tulum Contemporary Elevation



Tulum Contemporary with Flex Option



Tulum Modern Elevation with 3 car option



Tulum Modern Elevation

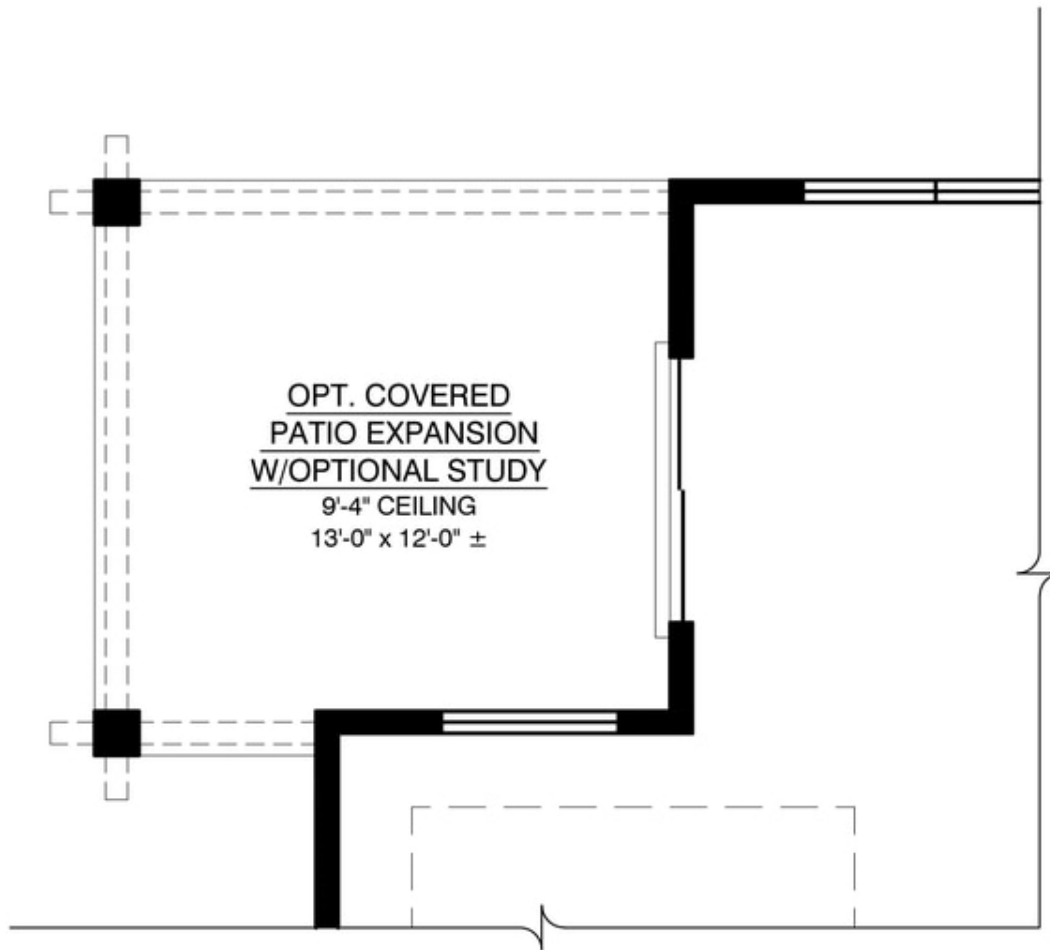
Homes may be built in reverse of plans shown, depending on site conditions. Minor architectural changes may be made occasionally at the option of the builder. Printed material is not date stamped. Prices are subject to change. Please reference Abrazo Homes' website for most updated and accurate pricing and information. Please contact your Sales Consultant for details.



Tulum Floor Plan

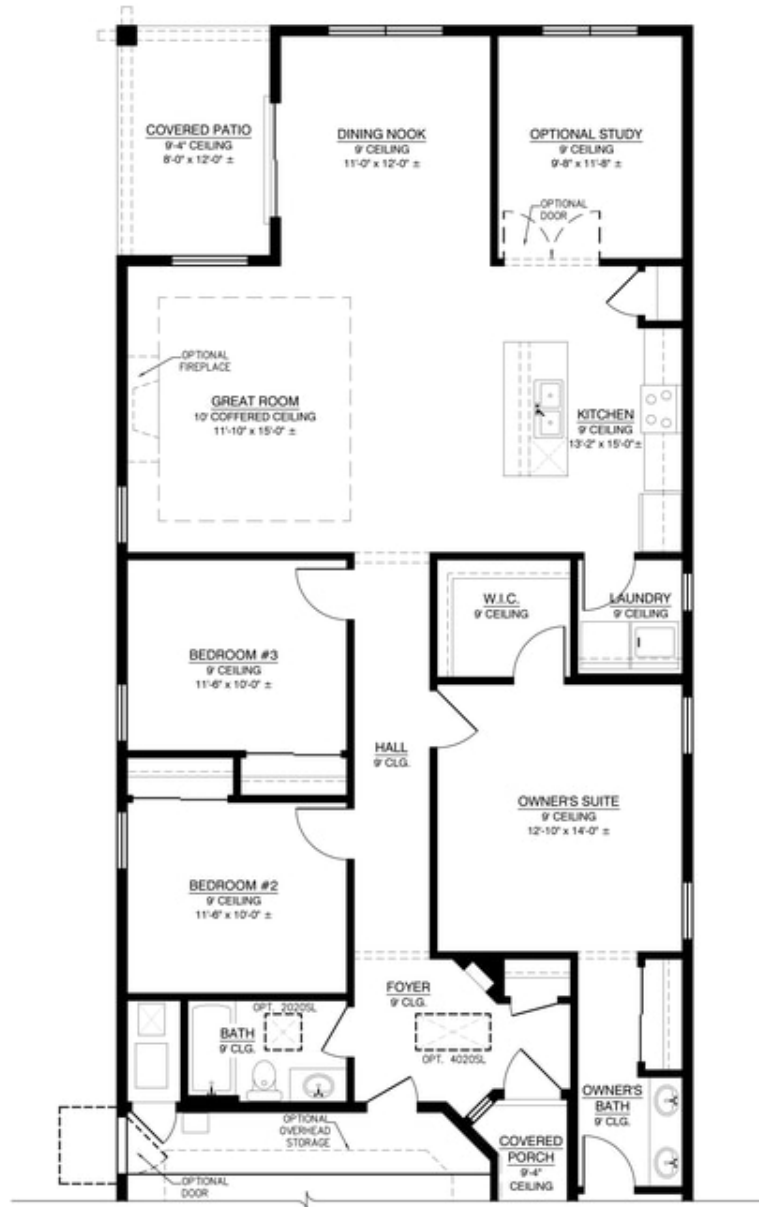


Optional Covered Patio Expansion w/Optional Study



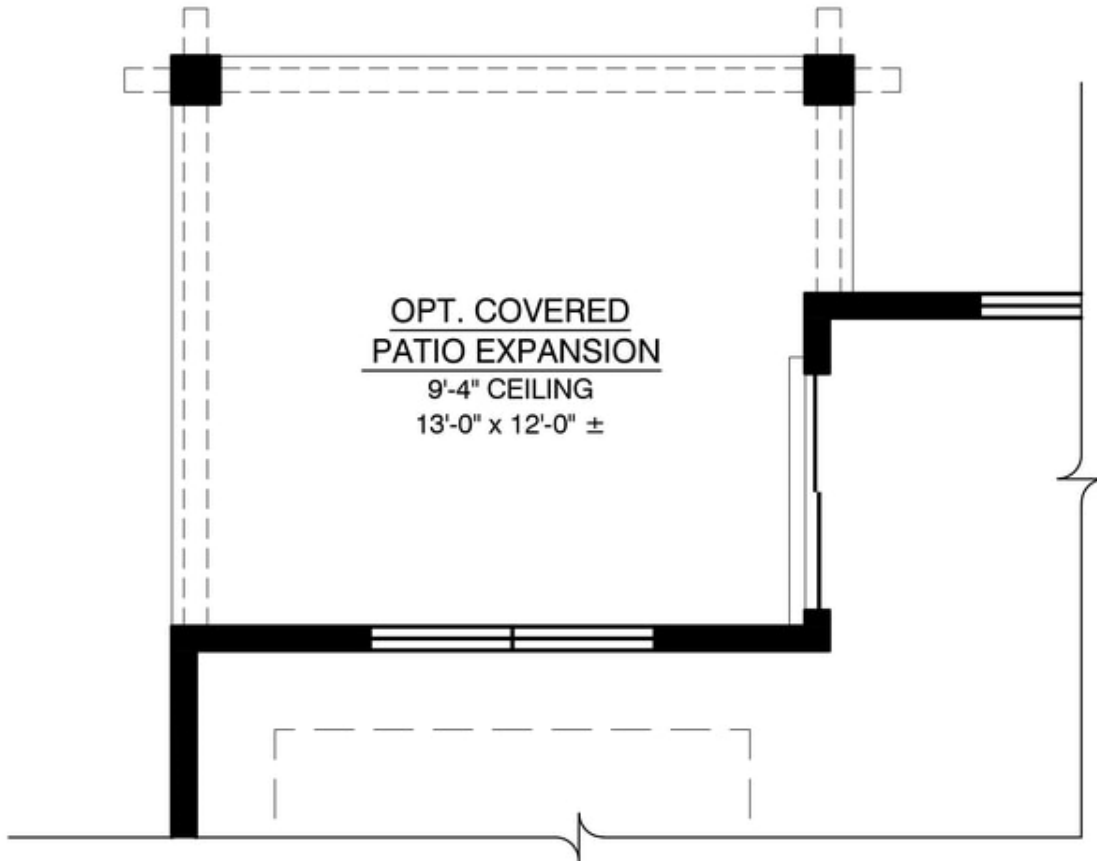
PARTIAL FLOOR PLAN OPTIONAL COV'D PATIO EXPANSION W/OPTIONAL STUDY

Optional Study (on partial floor plan)



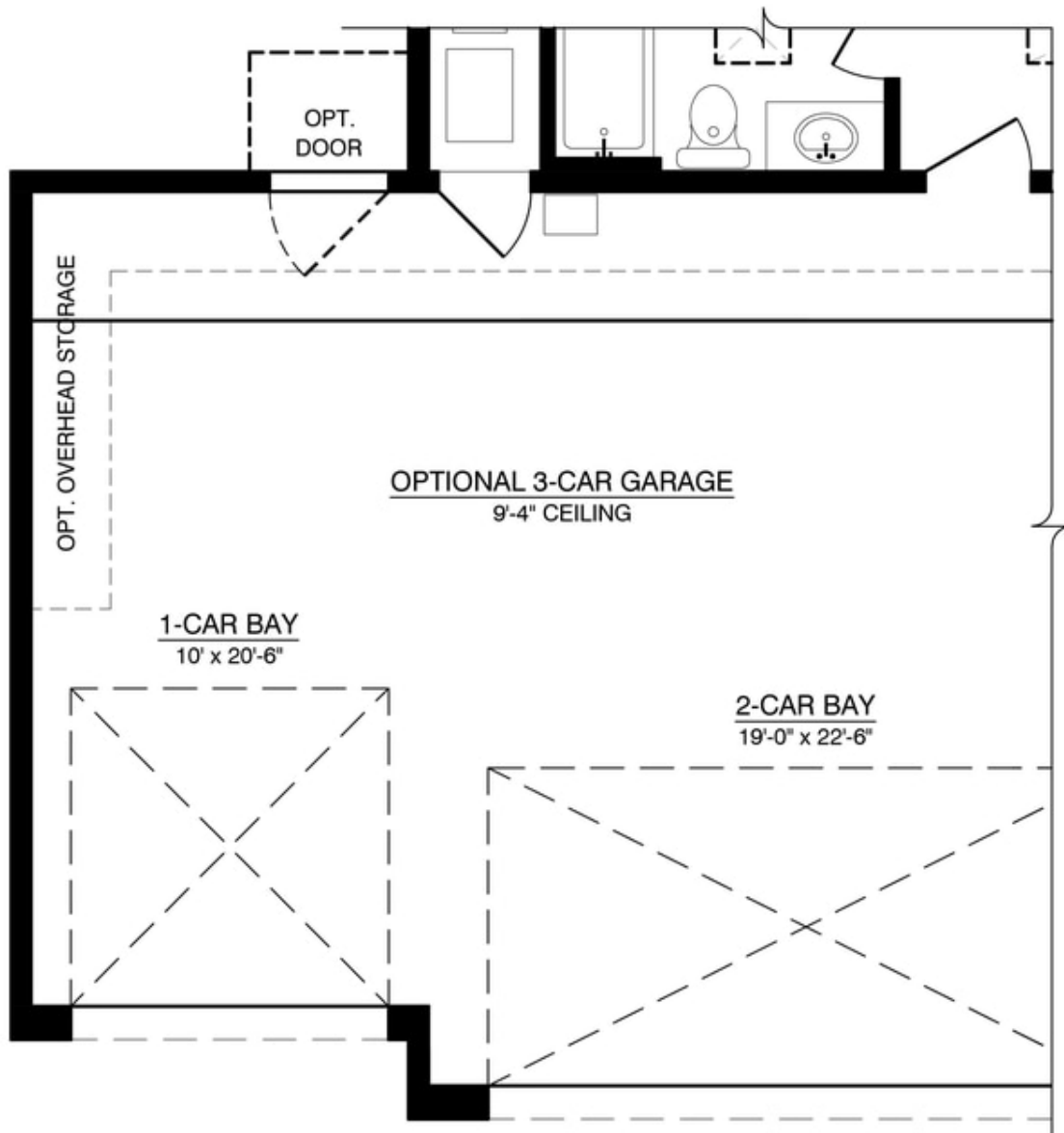
PARTIAL FLOOR PLAN
OPTIONAL STUDY

Optional Covered Patio Expansion



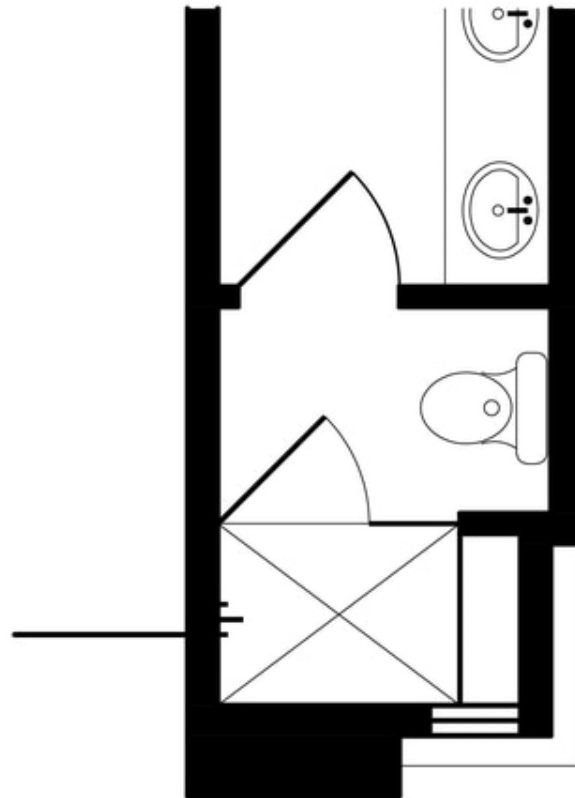
PARTIAL FLOOR PLAN OPTIONAL COV'D PATIO EXPANSION W/BASE LAYOUT

Optional 3rd Car Garage



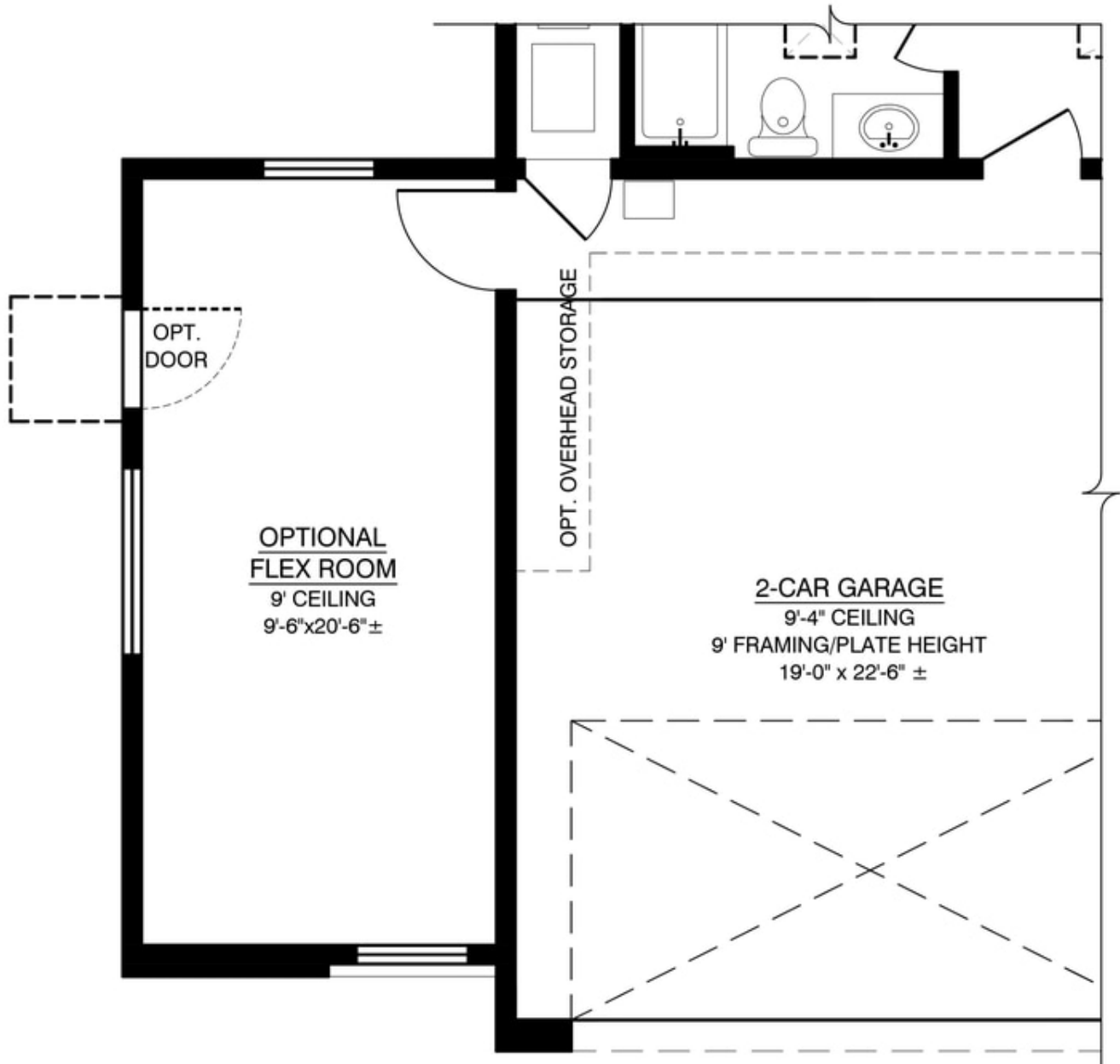
FLOOR PLAN OPTIONAL 3-CAR GARAGE

Optional 4' Shower in Owners Suite



OPT. 4' SHOWER
W/ SEAT
NO CHANGE IN
SQUARE FOOTAGE

Optional Flex Room



FLOOR PLAN OPTIONAL FLEX ROOM