



NONE HOME

6706 Sydney Drive NE

Rio Rancho, NM 87144

NEW HOME SPECIALIST


Call Us @ 505-510-4626

UNDER CONSTRUCTION



HOME PRICED AT
\$593,490

Plan: The Taylor II

 2,884 Sq. Ft.

 4 Bedrooms

 3.5 Bathrooms

Named in honor of Elizabeth Taylor, the Taylor II is a beautifully designed 2-story home, offering between 2,603 and 2,884 square feet of thoughtfully crafted living space. This home features 3 bedrooms, 2.5 bathrooms, a flexible loft, and a dedicated workspace—perfect for today's lifestyle. With options to expand up to 5 bedrooms and 3.5 bathrooms, as well as the option to add a 3rd car garage, the Taylor II adapts to meet a variety of needs.

An optional attached casita suite makes this home especially ideal for multigenerational households, providing a private space for extended family members. The open-concept layout offers ample room for entertaining, while the well-planned design ensures privacy and comfort for all. The Taylor II combines modern functionality with classic appeal, creating a home that's both stylish and versatile.

Homes may be built in reverse of plans shown, depending on site conditions. Minor architectural changes may be made occasionally at the option of the builder. Printed material is not date stamped. Prices are subject to change. Please reference Abrazo Homes' website for most updated and accurate pricing and information. Please contact your Sales Consultant for details.





NONE HOME

6706 Sydney Drive NE

Rio Rancho, NM 87144

NEW HOME SPECIALIST

Call Us @ 505-510-4626



Homes may be built in reverse of plans shown, depending on site conditions. Minor architectural changes may be made occasionally at the option of the builder. Printed material is not date stamped. Prices are subject to change. Please reference Abrazo Homes' website for most updated and accurate pricing and information. Please contact your Sales Consultant for details.





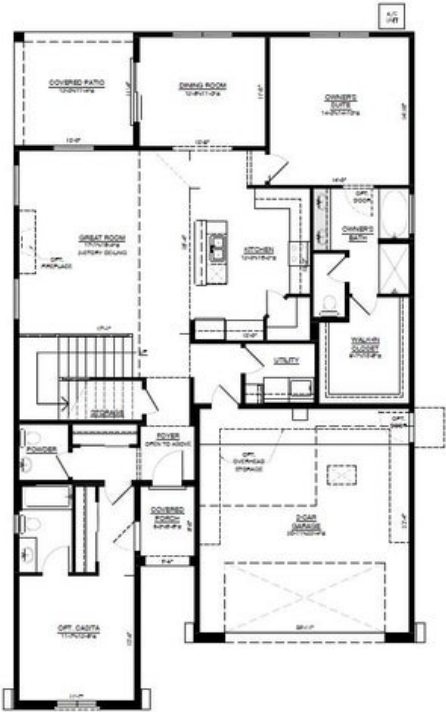
NONE HOME

6706 Sydney Drive NE

Rio Rancho, NM 87144

NEW HOME SPECIALIST

Call Us @ 505-510-4626



LOWER LEVEL FLOOR PLAN W/OPT. CASITA



UPPER LEVEL FLOOR PLAN



FRONT ELEVATION W/OPT. CASITA



FRONT OPT. CRAFTSMAN ELEVATION W/OPT. CASITA

Homes may be built in reverse of plans shown, depending on site conditions. Minor architectural changes may be made occasionally at the option of the builder. Printed material is not date stamped. Prices are subject to change. Please reference Abrazo Homes' website for most updated and accurate pricing and information. Please contact your Sales Consultant for details.

