



SINGLE FAMILY HOME

6674 Sydney Drive NE

Rio Rancho, NM 87144


UNDER CONSTRUCTION



HOME PRICED AT
\$389,945

Plan: Ixtapa

Elevation: Contemporary
Elevation

 1,503 Sq. Ft.

 3 Bedrooms

 2.0 Bathrooms

Discover the pinnacle of modern living in "The Ixtapa," a beautifully crafted home designed with sophistication and your lifestyle in mind. Located in the vibrant community of Moderno at Lomas Encantadas, this elegant home offers a sleek and sophisticated retreat with 3 bedrooms and 2 bathrooms.

Step inside to a space where style meets comfort, featuring light wood-look tile flooring and high-quality quartz countertops. The clean, linen-colored cabinets and sleek backsplash transform the kitchen into a functional and visually appealing culinary space. Every detail is meticulously curated, including a full suite of appliances—yes, even the washer and dryer!

But that's not all. "The Ixtapa" boasts an array of smart home features through our exclusive "Abrazo Intelligence" package, which will make this the smartest, healthiest home you have ever lived in. In addition, enjoy the convenience of blinds on all accessible windows, a garage door opener, and the eco-friendly benefits of a tankless water heater and EV charger pre-wiring.

Make "The Ixtapa" your new home and embrace a world where contemporary meets convenience in the heart of Rio Rancho. Prices may vary. See our website for more information. Printed material is not date stamped. Prices are subject to change. Sales Consultant for details.

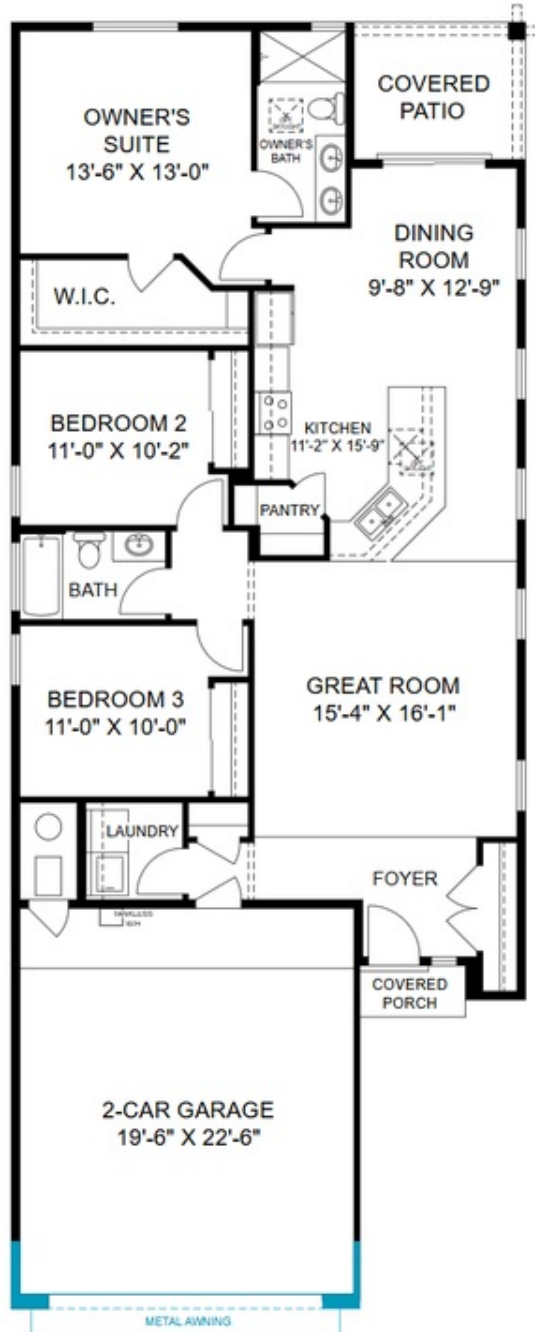




SINGLE FAMILY HOME

6674 Sydney Drive NE

Rio Rancho, NM 87144



Homes may be built in reverse of plans shown, depending on site conditions. Minor architectural changes may be made occasionally at the option of the builder. Printed material is not date stamped. Prices are subject to change. Please reference Abrazo Homes' website for most updated and accurate pricing and information. Please contact your Sales Consultant for details.

