



SINGLE FAMILY HOME


Mazatlan


Moderno at Lomas Encantadas




PRICED FROM
\$405,980

2 Elevations Available

 2,099+ Sq. Ft.

 3 - 4 Bedrooms

 2.5 Bathrooms

 2 Car Garage

Sitting right where the Pacific Ocean becomes the Sea of Cortez, Mazatlan is one of the most unique destinations in Mexico. Picture if San Miguel de Allende and Puerto Vallarta had a baby. Just like this modern destination's allure, our Mazatlan floor plan offers a truly unique experience. You'll see what we mean as soon as you step onto the second floor open deck from the owner's suite. As you enjoy a mind-blowing sunset right outside your room, you can almost taste the palapa'd beach bars lining the Pacific shoreline slinging ceviche and frosty Pacifico beers. Salud!



Contemporary Elevation

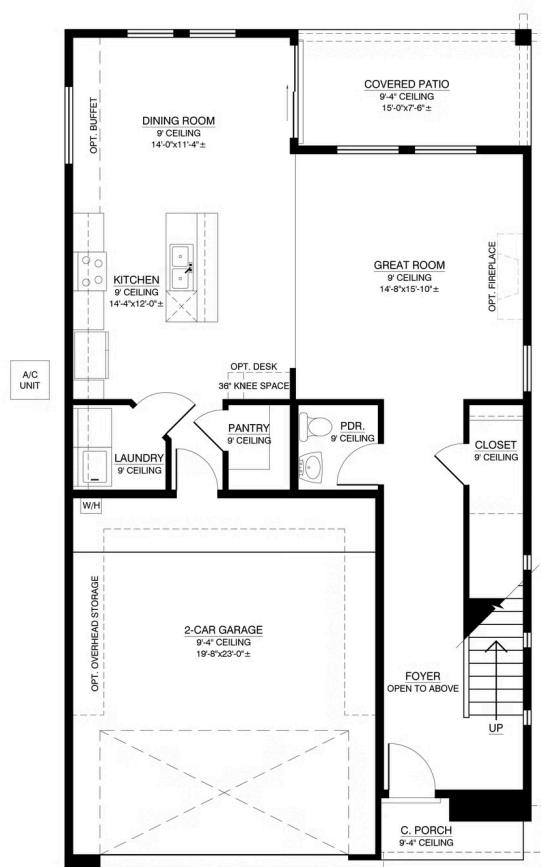


Modern Elevation

Homes may be built in reverse of plans shown, depending on site conditions. Minor architectural changes may be made occasionally at the option of the builder. Printed material is not date stamped. Prices are subject to change. Please reference Abrazo Homes' website for most updated and accurate pricing and information. Please contact your Sales Consultant for details.



First Floor

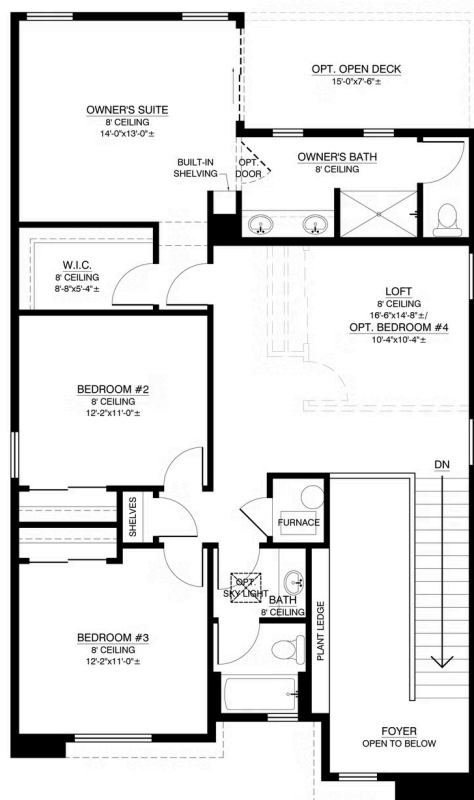


1ST FLOOR

Homes may be built in reverse of plans shown, depending on site conditions. Minor architectural changes may be made occasionally at the option of the builder. Printed material is not date stamped. Prices are subject to change. Please reference Abrazo Homes' website for most updated and accurate pricing and information. Please contact your Sales Consultant for details.



Second Floor

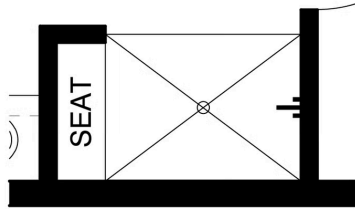
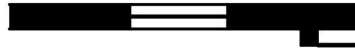


2ND FLOOR

Homes may be built in reverse of plans shown, depending on site conditions. Minor architectural changes may be made occasionally at the option of the builder. Printed material is not date stamped. Prices are subject to change. Please reference Abrazo Homes' website for most updated and accurate pricing and information. Please contact your Sales Consultant for details.



Optional Owners Bath



OPT. 4' SHOWER W/ SEAT

NO CHANGE IN SQUARE FOOTAGE

Homes may be built in reverse of plans shown, depending on site conditions. Minor architectural changes may be made occasionally at the option of the builder. Printed material is not date stamped. Prices are subject to change. Please reference Abrazo Homes' website for most updated and accurate pricing and information. Please contact your Sales Consultant for details.

