



SINGLE FAMILY HOME

2641 Seaforth Circle NE

Rio Rancho, NM 87144

NEW HOME SPECIALIST

Call Us @ 505-510-4626

UNDER CONSTRUCTION




HOME PRICED AT
\$403,075

Plan: Frida Lux

 1,406 Sq. Ft.

 3 Bedrooms

 2.0 Bathrooms

Comfort & Elegance in Scottish Isle – Your Perfect Retreat Awaits!

✨ 3 Bedrooms | 2 Bathrooms | Upgraded Owner's Suite | Overhead Garage Storage | Covered Patio | Granite Countertops ✨

Welcome to **Scottish Isle**, the newest neighborhood in **Rio Rancho's Broadmoor Corridor**, where thoughtful design meets everyday comfort. This beautifully finished **3-bedroom, 2-bathroom** home features an **upgraded owner's suite** that brings a touch of luxury to your daily routine.

☀️ Why You'll Love It:

- ✓ **Upgraded Owner's Suite** – A private retreat with enhanced finishes and space to unwind
- ✓ **Upgraded Granite Countertops** – Classic, elegant, and built to impress
- ✓ **Overhead Garage Storage** – Keep your essentials tucked away and organized
- ✓ **Covered Patio** – Perfect for relaxing under New Mexico's beautiful skies
- ✓ **Brand-New Community** – Be among the first to enjoy the charm of Scottish Isle living

With nearby access to great schools, shops, and recreation, this home is as practical as it is beautiful. Don't miss the chance to own in one of **Rio Rancho's fastest-growing areas!**

📞 **Call today to schedule your private tour – your next chapter starts here!**

#ScottishIsleLiving #BroadmoorCorridor #UpgradedOwnersSuite #NewHomeNM
#RioRanchoHomes

Homes may be built in reverse of plans shown, depending on site conditions. Minor architectural changes may be made occasionally at the option of the builder. Printed material is not date stamped. Prices are subject to change. Please reference Abrazo Homes' website for most updated and accurate pricing and information. Please contact your Sales Consultant for details.





SINGLE FAMILY HOME

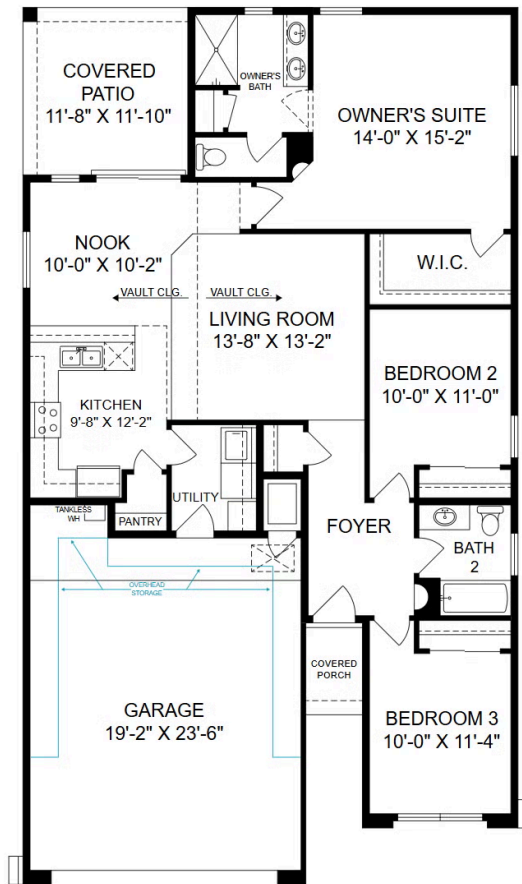
2641 Seaforth Circle NE

Rio Rancho, NM 87144

NEW HOME SPECIALIST

Call Us @ 505-510-4626

[Click Here](#)



Homes may be built in reverse of plans shown, depending on site conditions. Minor architectural changes may be made occasionally at the option of the builder. Printed material is not date stamped. Prices are subject to change. Please reference Abrazo Homes' website for most updated and accurate pricing and information. Please contact your Sales Consultant for details.

