



SINGLE FAMILY HOME

2684 Seaforth Circle NE

Rio Rancho, NM 87144

NEW HOME SPECIALIST


Call Us @ 505-510-4626

UNDER CONSTRUCTION




HOME PRICED AT
\$414,990

Plan: Maya

 1,566 Sq. Ft.

 3 Bedrooms

 2.0 Bathrooms

The Maya – Modern Comfort with Smart Design in Scottish Isle

The Maya floor plan offers the ideal mix of style, practicality, and future-ready living. Featuring 3 spacious bedrooms and 2 bathrooms, this home shines.

Enjoy SPC flooring paired with plush carpeting, a gas range for culinary enthusiasts, and stunning level 3 quartz countertops that elevate your kitchen's look and feel.

The 2-car garage includes overhead storage and comes pre-wired for an EV charger, making it as functional as it is forward-thinking.

A covered patio lets you take full advantage of New Mexico's incredible weather—all set within the beautifully planned Scottish Isle community in Rio Rancho.

The Maya blends comfort, convenience, and modern living—exactly where you want to be.

Homes may be built in reverse of plans shown, depending on site conditions. Minor architectural changes may be made occasionally at the option of the builder. Printed material is not date stamped. Prices are subject to change. Please reference Abrazo Homes' website for most updated and accurate pricing and information. Please contact your Sales Consultant for details.





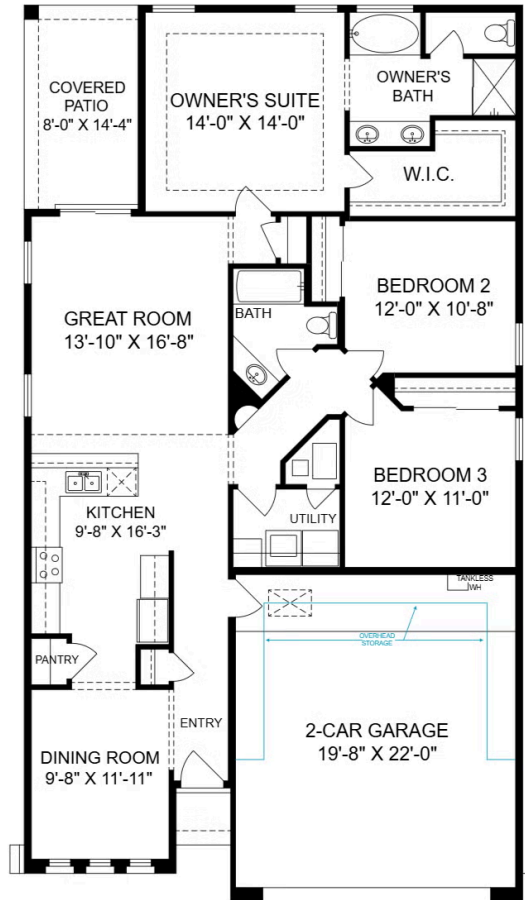
SINGLE FAMILY HOME

2684 Seaforth Circle NE

Rio Rancho, NM 87144

NEW HOME SPECIALIST

Call Us @ 505-510-4626



Homes may be built in reverse of plans shown, depending on site conditions. Minor architectural changes may be made occasionally at the option of the builder. Printed material is not date stamped. Prices are subject to change. Please reference Abrazo Homes' website for most updated and accurate pricing and information. Please contact your Sales Consultant for details.

