



SINGLE FAMILY HOME

**2685 Seaforth Circle NE**

Rio Rancho, NM 87144

NEW HOME SPECIALIST

Call Us @ 505-510-4626

MOVE-IN READY




HOME PRICED AT  
**\$469,970**

Plan: Jane

 2,164 Sq. Ft.

 3 Bedrooms

 2.0 Bathrooms

## Versatile & Modern Living in Scottish Isle – Rio Rancho's Newest Community!

✨ 3 Bedrooms | 2 Bathrooms | Added Flex Room | Covered Patio | Upgraded Quartz Countertops ✨

Welcome to **Scottish Isle**, a brand-new community in the heart of **Rio Rancho's Broadmoor Corridor**! This thoughtfully designed **3-bedroom, 2-bathroom home** offers flexible living space with an **added flex room at the garage**, perfect for a home office, gym, or creative studio.

### Home Features You'll Love:

- **Added Flex Room** – Customize your space to fit your lifestyle
- **Upgraded Quartz Countertops** – Sleek, stylish, and built for durability
- **Covered Patio** – Relax and take in the stunning New Mexico skies year-round
- **Brand-New Community** – Enjoy modern living in a prime Rio Rancho location

With easy access to top-rated schools, shopping, dining, and outdoor recreation, this home blends convenience with comfort. **Be one of the first to call Scottish Isle home!**

 **Schedule your tour today—your dream home awaits!**

Homes may be built in reverse of plans shown, depending on site conditions. Minor architectural changes may be made occasionally at the option of the builder. Printed material is not date stamped. Prices are subject to change. Please reference Abrazo Homes' website for most updated and accurate pricing and information. Please contact your Sales Consultant for details.





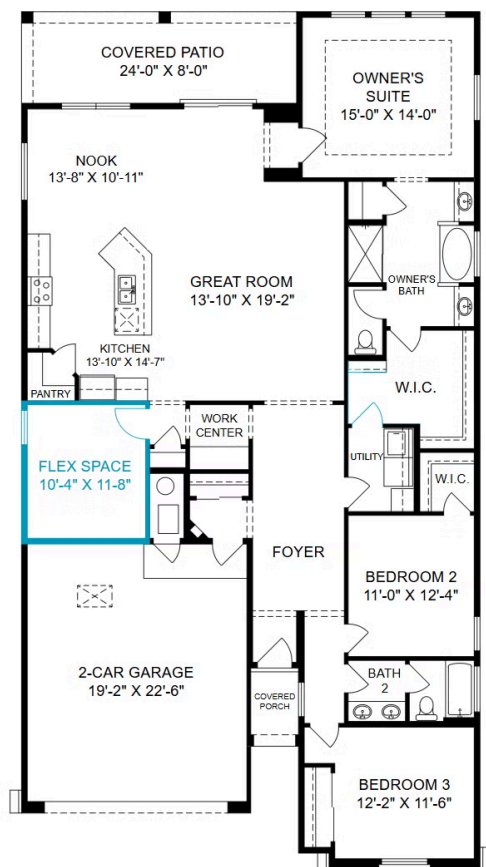
SINGLE FAMILY HOME

## 2685 Seaforth Circle NE

Rio Rancho, NM 87144

NEW HOME SPECIALIST

Call Us @ 505-510-4626



Homes may be built in reverse of plans shown, depending on site conditions. Minor architectural changes may be made occasionally at the option of the builder. Printed material is not date stamped. Prices are subject to change. Please reference Abrazo Homes' website for most updated and accurate pricing and information. Please contact your Sales Consultant for details.

