



SINGLE FAMILY HOME

2704 Seaforth Circle NE

Rio Rancho, NM 87144

NEW HOME SPECIALIST

Call Us @ 505-337-3243

UNDER CONSTRUCTION




HOME PRICED AT
\$424,430

Plan: Maya

 1,566 Sq. Ft.

 3 Bedrooms

 2.0 Bathrooms

Located in Scottish Isle in Rio Rancho, the Maya floor plan combines modern upgrades with bright, open living. A vaulted ceiling and 8' sliding glass door create an airy feel, while a skylight in the guest bath adds natural light in all the right places.

The kitchen features Level 3 granite countertops, a gas range, and stainless appliances, complemented by upgraded cabinetry and a mix of tile, SPC, and carpet flooring throughout. Additional touches like adult-height vanities and a frameless shower door elevate everyday comfort.

Built with efficiency in mind, this home includes enhanced insulation and an EV charger prewire, while the garage offers overhead storage and a quiet belt-drive opener. A perfect blend of style, function, and New Mexico living.

Homes may be built in reverse of plans shown, depending on site conditions. Minor architectural changes may be made occasionally at the option of the builder. Printed material is not date stamped. Prices are subject to change. Please reference Abrazo Homes' website for most updated and accurate pricing and information. Please contact your Sales Consultant for details.

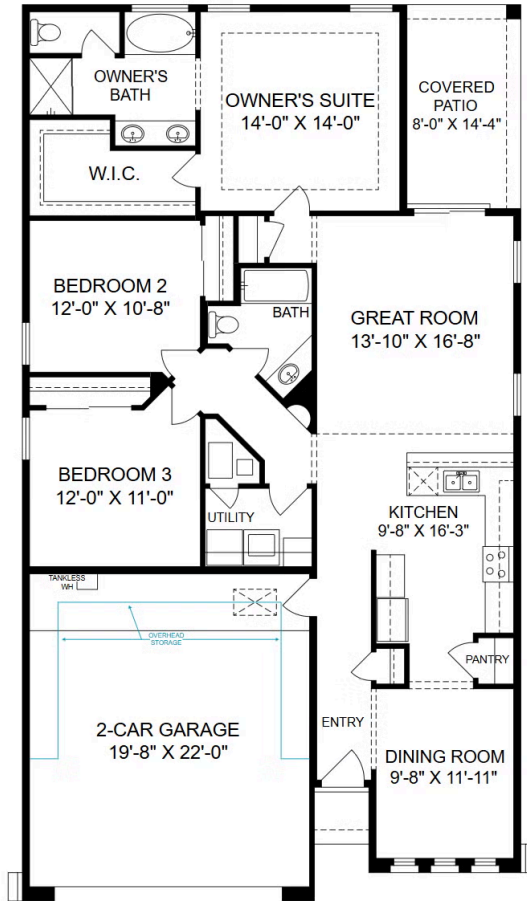




SINGLE FAMILY HOME
2704 Seaforth Circle NE
Rio Rancho, NM 87144

NEW HOME SPECIALIST
Call Us @ 505-337-3243

[Click Here](#)



Homes may be built in reverse of plans shown, depending on site conditions. Minor architectural changes may be made occasionally at the option of the builder. Printed material is not date stamped. Prices are subject to change. Please reference Abrazo Homes' website for most updated and accurate pricing and information. Please contact your Sales Consultant for details.

