



SINGLE FAMILY HOME

## 2772 Seaforth Circle NE

Rio Rancho, NM 87144


NEW HOME SPECIALIST

Call Us @ 505-510-4626



### SALE PENDING

**Plan:** Maya

 1,566 Sq. Ft.

 3 Bedrooms

 2.0 Bathrooms

Welcome to Scottish Isle, Rio Rancho's newest gem in the desirable Broadmoor Corridor. This thoughtfully designed 3 bedroom, 2 bathroom home combines comfort, style, and the best of New Mexico living.

Key features include:

- Spacious 3 bedrooms offering comfort and privacy
- Upgraded granite countertops adding a touch of elegance to the kitchen
- Covered patio perfect for enjoying Rio Rancho's sunsets and mild climate
- Located in a brand new community with modern amenities

Set in a vibrant and growing area, this home provides convenient access to top rated schools, shopping, dining, and outdoor recreation.

Contact us today to schedule your tour and make this home your own.

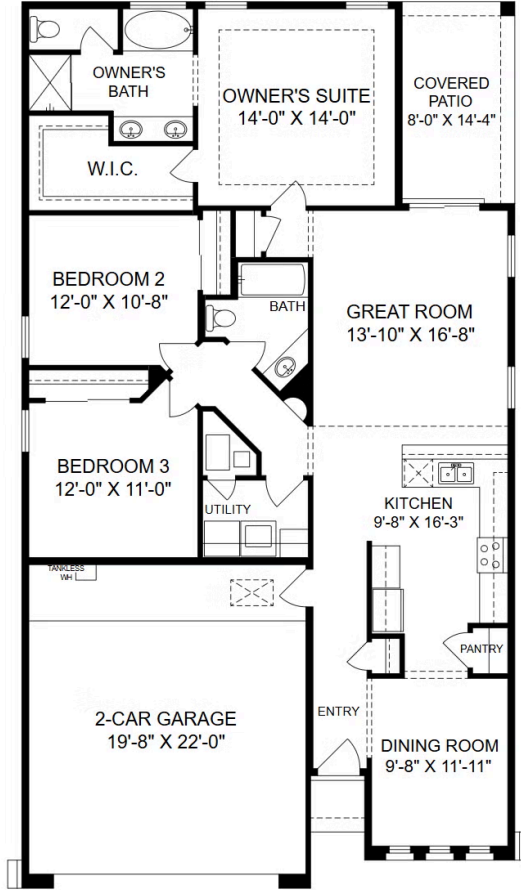
Homes may be built in reverse of plans shown, depending on site conditions. Minor architectural changes may be made occasionally at the option of the builder. Printed material is not date stamped. Prices are subject to change. Please reference Abrazo Homes' website for most updated and accurate pricing and information. Please contact your Sales Consultant for details.





SINGLE FAMILY HOME  
**2772 Seaforth Circle NE**  
Rio Rancho, NM 87144

NEW HOME SPECIALIST  
Call Us @ 505-510-4626



Homes may be built in reverse of plans shown, depending on site conditions. Minor architectural changes may be made occasionally at the option of the builder. Printed material is not date stamped. Prices are subject to change. Please reference Abrazo Homes' website for most updated and accurate pricing and information. Please contact your Sales Consultant for details.

