



SINGLE FAMILY HOME

# 2772 Seaforth Circle NE

Rio Rancho, NM 87144

NEW HOME SPECIALIST

Call Us @ 505-510-4626

UNDER CONSTRUCTION



HOME PRICED AT  
**\$410,595**

Plan: Maya

 1,566 Sq. Ft.

 3 Bedrooms

 2.0 Bathrooms

Welcome to **Scottish Isle**, Rio Rancho's newest gem nestled in the sought-after Broadmoor Corridor! This beautifully crafted 3 bedroom, 2 bathroom home is designed for comfort, style, and the ultimate New Mexico living experience.

### ✦ Key Features:

- ✓ **Spacious 3 Bedrooms** - Perfect for relaxation and privacy
- ✓ **Upgraded Granite Countertops** - A luxurious touch in your modern kitchen
- ✓ **Covered Patio** - Enjoy Rio Rancho's stunning sunsets and perfect weather year-round
- ✓ **Brand-New Community** - Be one of the first to call Scottish Isle home!

Located in a vibrant and growing area, this home offers easy access to top-rated schools, shopping, dining, and outdoor adventures. Don't miss your chance to own a piece of Rio Rancho's future!

📞 **Call today to schedule your tour and make this dream home yours!**

Homes may be built in reverse of plans shown, depending on site conditions. Minor architectural changes may be made occasionally at the option of the builder. Printed material is not date stamped. Prices are subject to change. Please reference Abrazo Homes' website for most updated and accurate pricing and information. Please contact your Sales Consultant for details.





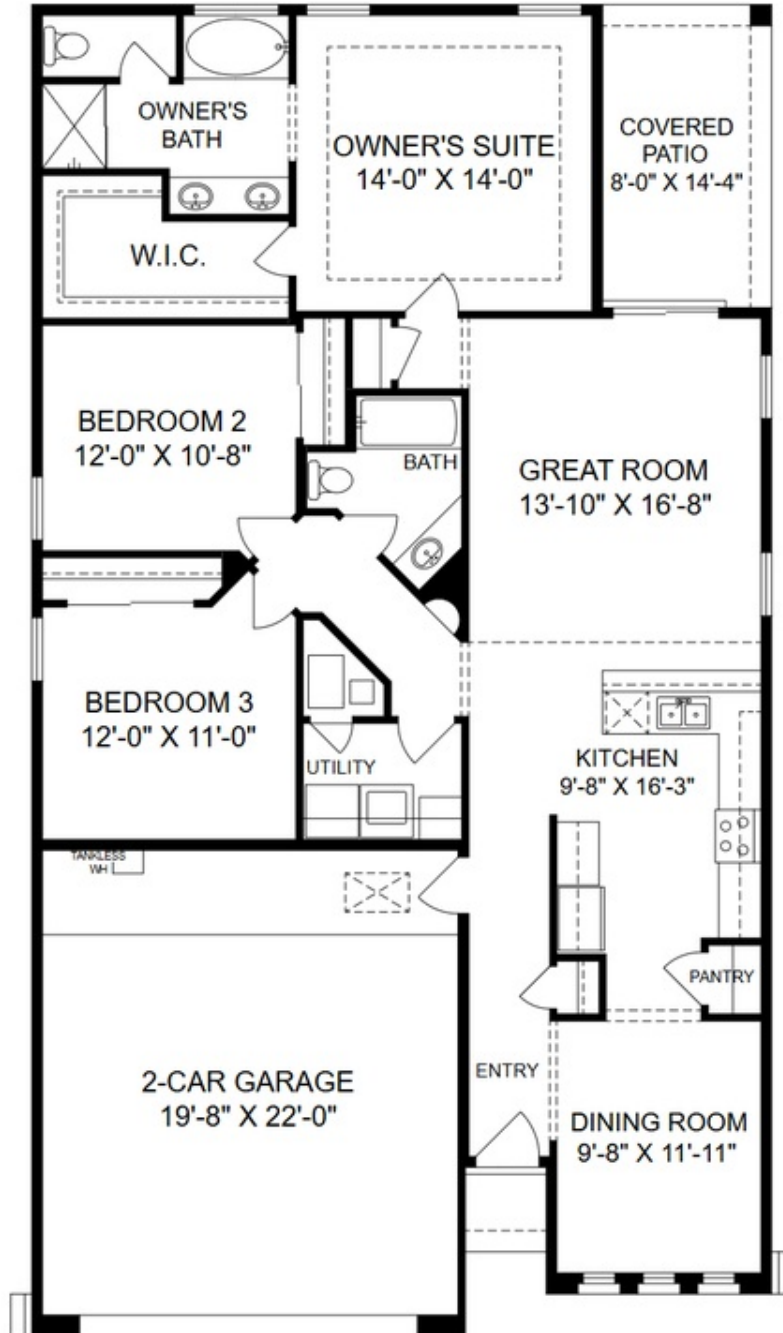
SINGLE FAMILY HOME

# 2772 Seaforth Circle NE

Rio Rancho, NM 87144

NEW HOME SPECIALIST

Call Us @ 505-510-4626



Homes may be built in reverse of plans shown, depending on site conditions. Minor architectural changes may be made occasionally at the option of the builder. Printed material is not date stamped. Prices are subject to change. Please reference Abrazo Homes' website for most updated and accurate pricing and information. Please contact your Sales Consultant for details.

