




SINGLE FAMILY HOME

# The Tiffany




## Call for Price

**2 Elevations Available**

 2,788+ Sq. Ft.

 3 Bedrooms

 3 Bathrooms

 3 Car Garage

Varying from tradition, our Tiffany (ready to be built) floor plan is not named for a Woman in history, but rather a brilliant company known for its exceptional designs. The first thing you might notice about the Tiffany is the grand foyer. Between the many options and the Jack and Jill bathroom, there are an infinite number of configurations for any household making this plan work for almost any family type. Our Tiffany floor plan was the 2015 winner for the best kitchen, bath and the premiere award for the Parade of Homes.



Base Elevation

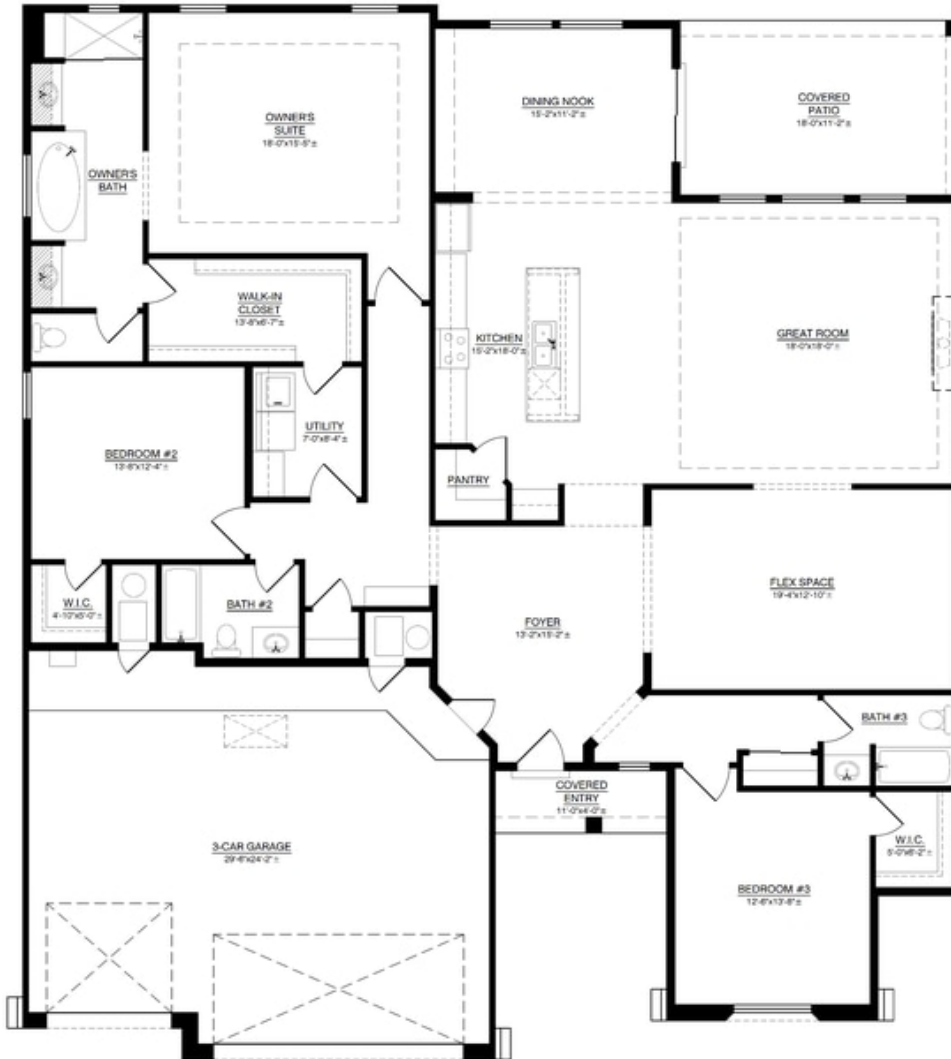


Craftsman Elevation

Homes may be built in reverse of plans shown, depending on site conditions. Minor architectural changes may be made occasionally at the option of the builder. Printed material is not date stamped. Prices are subject to change. Please reference Abrazo Homes' website for most updated and accurate pricing and information. Please contact your Sales Consultant for details.



## Tiffany Floor Plan



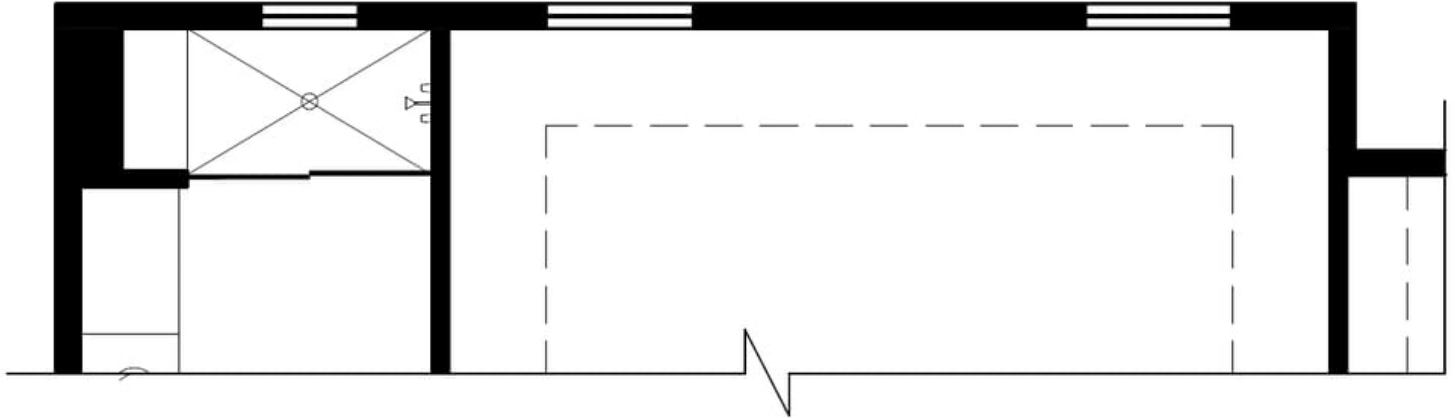
Homes may be built in reverse of plans shown, depending on site conditions. Minor architectural changes may be made occasionally at the option of the builder. Printed material is not date stamped. Prices are subject to change. Please reference Abrazo Homes' website for most updated and accurate pricing and information. Please contact your Sales Consultant for details.



SINGLE FAMILY HOME

# The Tiffany

## Optional Expanded Owners Suite



### OPTIONAL EXPANDED OWNER'S SUITE:

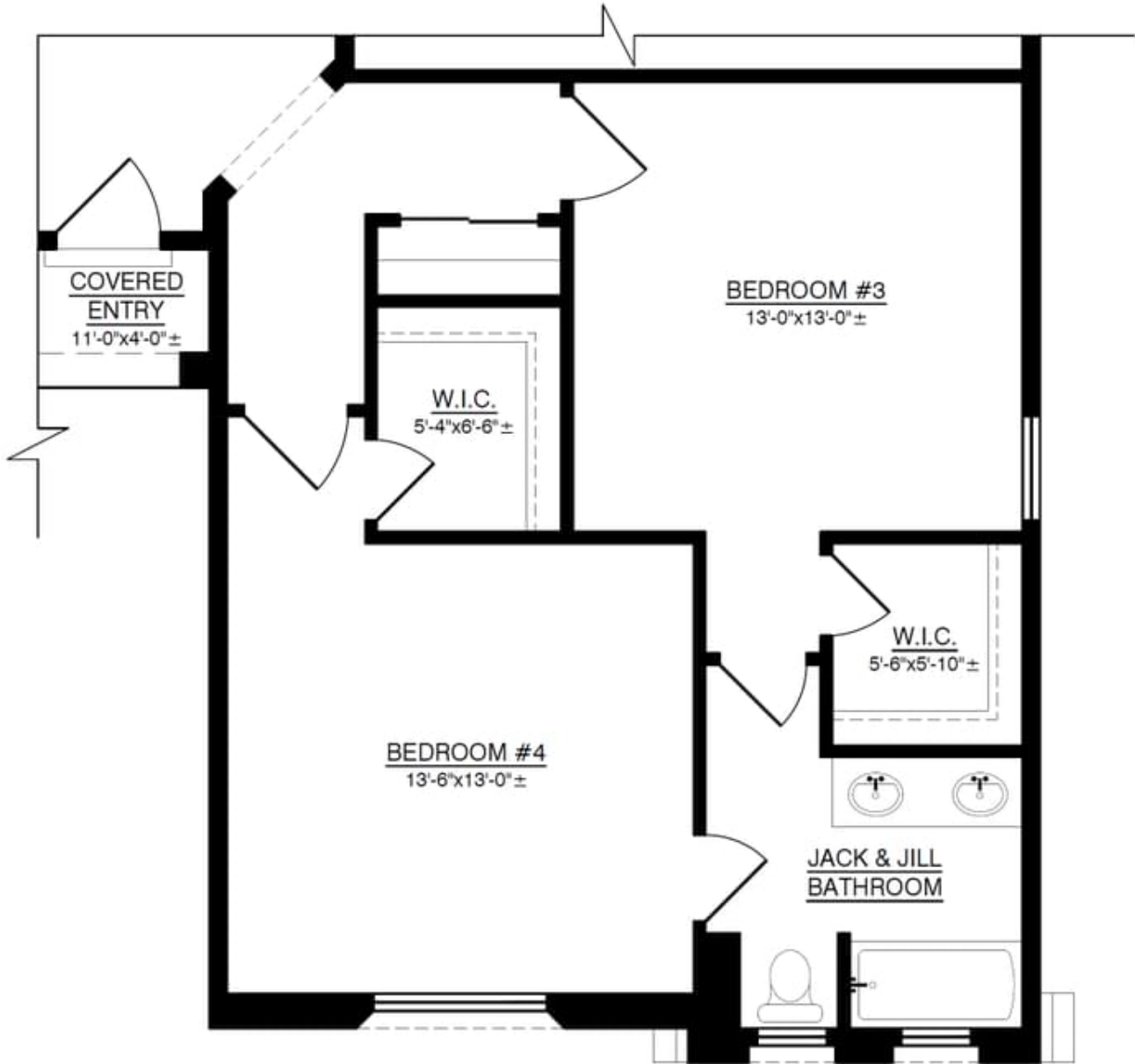
ADDITIONAL HEATED AREA: 53.00 SQ. FT.

Homes may be built in reverse of plans shown, depending on site conditions. Minor architectural changes may be made occasionally at the option of the builder. Printed material is not date stamped. Prices are subject to change. Please reference Abrazo Homes' website for most updated and accurate pricing and information. Please contact your Sales Consultant for details.



# The Tiffany

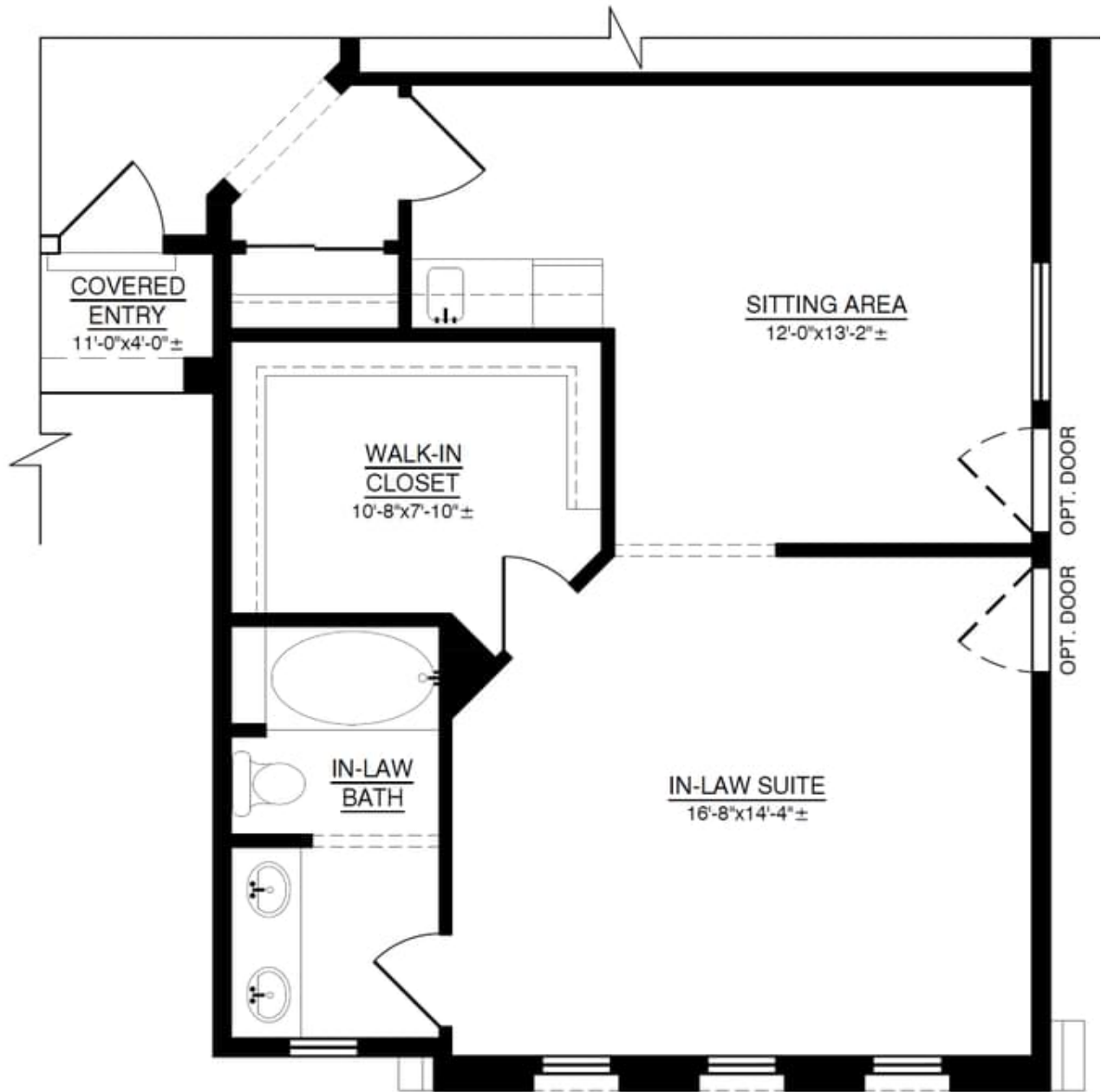
## Optional 3rd & 4th Bedroom



**OPTIONAL 4 BEDROOM W/ JACK & JILL BATH:**  
**ADDITIONAL HEATED AREA: 291.47 SQ. FT.**

Homes may be built in reverse of plans shown, depending on site conditions. Minor architectural changes may be made occasionally at the option of the builder. Printed material is not date stamped. Prices are subject to change. Please reference Abrazo Homes' website for most updated and accurate pricing and information. Please contact your Sales Consultant for details.

## Second Suite

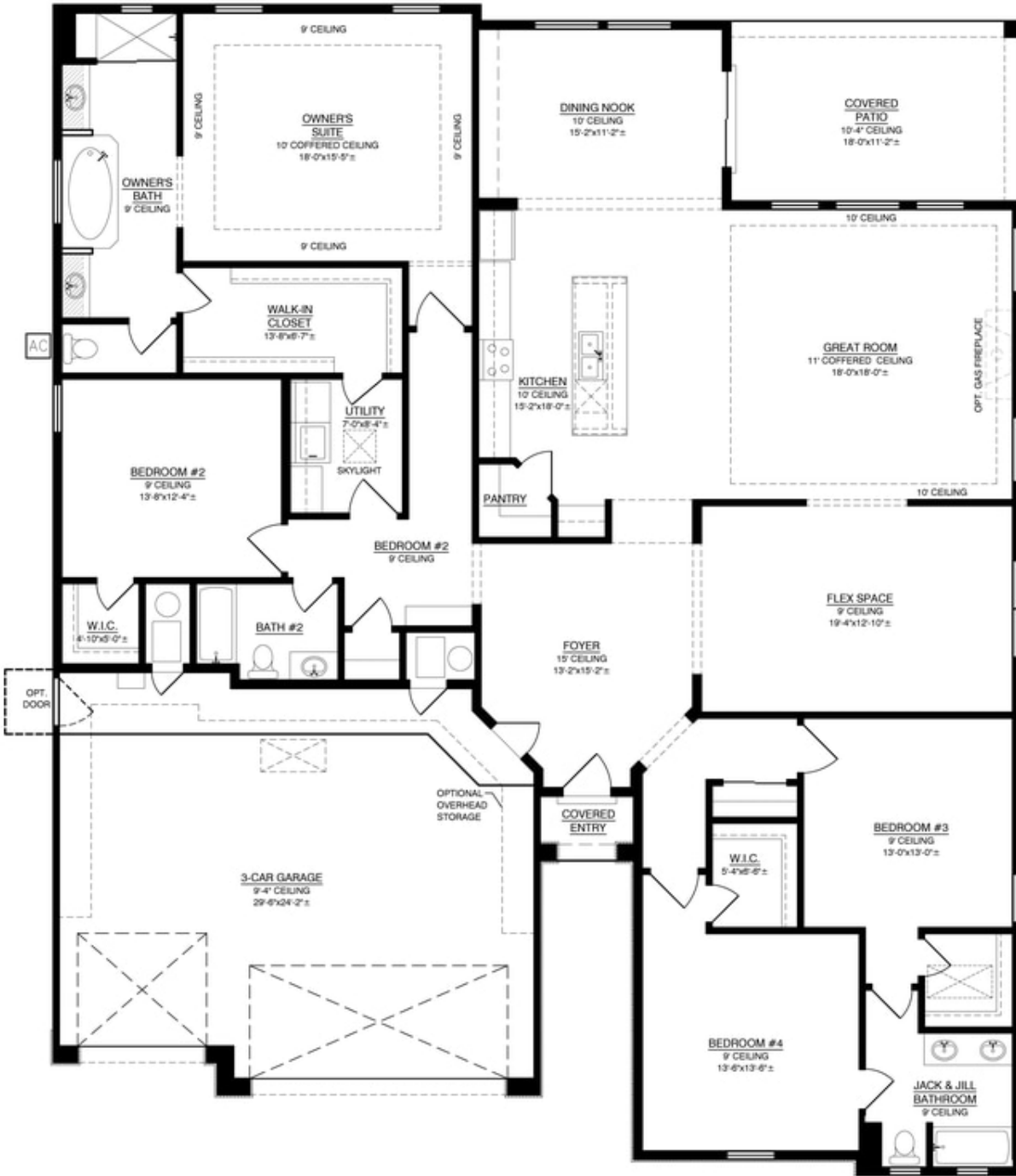


7'  
FT.

**OPTIONAL BEDROOM SUITE:**  
**ADDITIONAL HEATED AREA: 310.97 SQ. FT.**

# The Tiffany

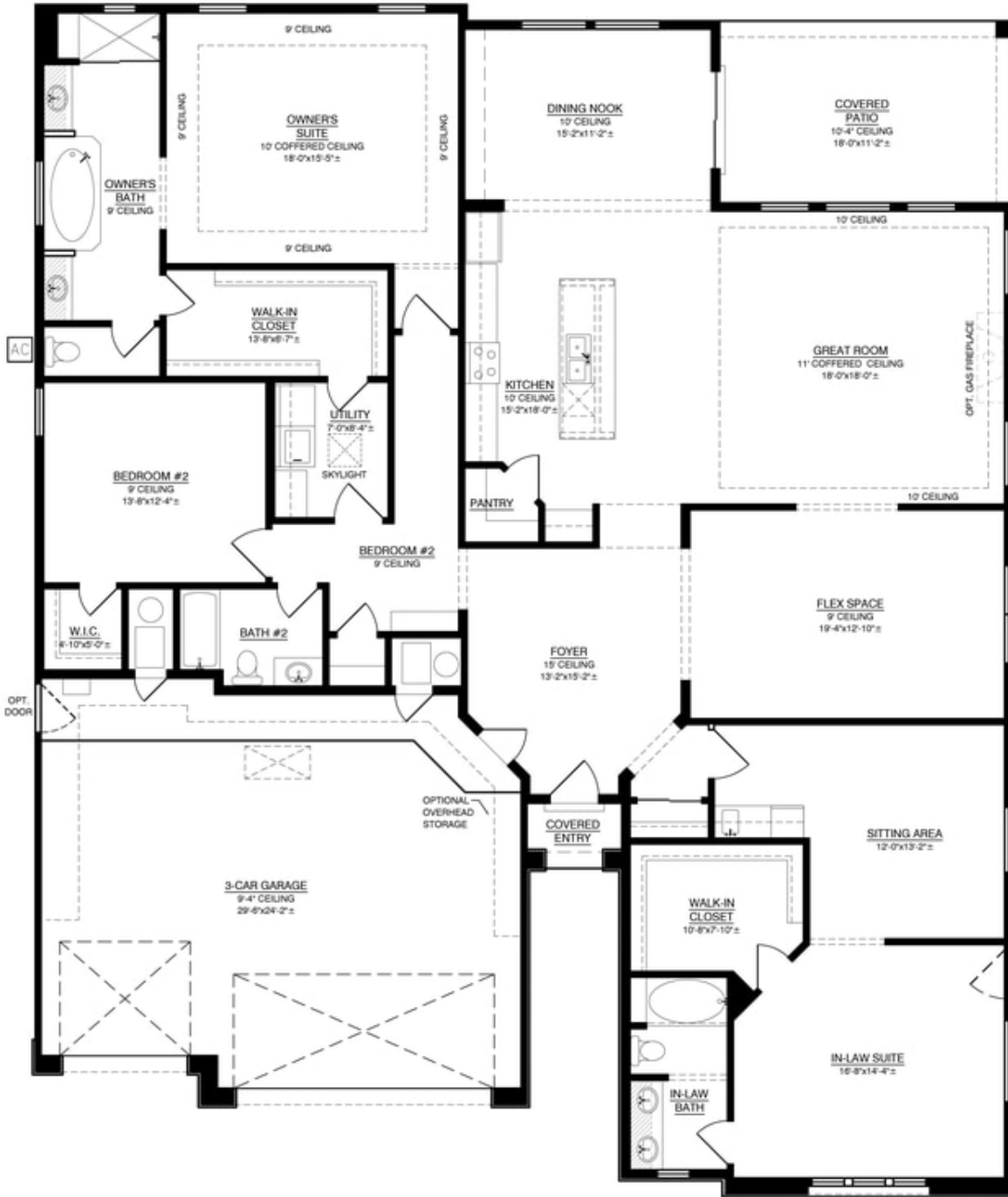
## The Tiffany Floor Plan with Jack and Jill Bath - 3080 (Durango)



Homes may be built in reverse of plans shown, depending on site conditions. Minor architectural changes may be made occasionally at the option of the builder. Printed material is not date stamped. Prices are subject to change. Please reference Abrazo Homes' website for most updated and accurate pricing and information. Please contact your Sales Consultant for details.

# The Tiffany

## The Tiffany Floor Plan with Casita - 3100 (Durango)



Homes may be built in reverse of plans shown, depending on site conditions. Minor architectural changes may be made occasionally at the option of the builder. Printed material is not date stamped. Prices are subject to change. Please reference Abrazo Homes' website for most updated and accurate pricing and information. Please contact your Sales Consultant for details.