





SINGLE FAMILY HOME
Victoria
Available in 3 Communities



Call for Price

6 Elevations Available

-  2,594+ Sq. Ft.
-  3 Bedrooms
-  2.5 Bathrooms
-  2 Car Garage

Meet the Victoria, the flagship of the Abrazo fleet. Luxurious and adaptable, it's designed to meet any family's needs. The owner's suite features dual walk-in closets, secondary bedrooms offer a Jack and Jill layout, and there's even an optional casita. Enjoy optimal natural lighting with large sliding glass doors that seamlessly connect indoor and outdoor spaces. In honor of Victoria Woodhull, this home pays homage to progress and inclusivity, celebrating a legacy of brightness.



Victoria Mission Tile Roof



Victoria Mission Tile Roof



Victoria Craftsman Tile Roof



Victoria Craftsman Tile Roof



Victoria Craftsman w/Casita Tile Roof



Victoria Craftsman w/3 Car Garage Tile Roof

Homes may be built in reverse of plans shown, depending on site conditions. Minor architectural changes may be made occasionally at the option of the builder. Printed material is not date stamped. Prices are subject to change. Please reference Abrazo Homes' website for most updated and accurate pricing and information. Please contact your Sales Consultant for details.



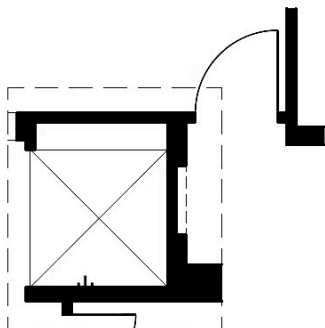
[illegible]

FLOOR PLAN



EQUAL HOUSING
OPPORTUNITY

Optional Shower in Owner's Suite

OPTIONAL 5'x5' SHOWER
IN OWNER'S SUITE

Homes may be built in reverse of plans shown, depending on site conditions. Minor architectural changes may be made occasionally at the option of the builder. Printed material is not date stamped. Prices are subject to change. Please reference Abrazo Homes' website for most updated and accurate pricing and information. Please contact your Sales Consultant for details.





SINGLE FAMILY HOME

Victoria

Available in 3 Communities

Optional Covered Patio Expansion

Homes may be built in reverse of plans shown, depending on site conditions. Minor architectural changes may be made occasionally at the option of the builder. Printed material is not date stamped. Prices are subject to change. Please reference Abrazo Homes' website for most updated and accurate pricing and information. Please contact your Sales Consultant for details.





SINGLE FAMILY HOME

Victoria

Available in 3 Communities

Optional Casita

Homes may be built in reverse of plans shown, depending on site conditions. Minor architectural changes may be made occasionally at the option of the builder. Printed material is not date stamped. Prices are subject to change. Please reference Abrazo Homes' website for most updated and accurate pricing and information. Please contact your Sales Consultant for details.





SINGLE FAMILY HOME

Victoria

Available in 3 Communities

Optional Sliding Glass Door

Homes may be built in reverse of plans shown, depending on site conditions. Minor architectural changes may be made occasionally at the option of the builder. Printed material is not date stamped. Prices are subject to change. Please reference Abrazo Homes' website for most updated and accurate pricing and information. Please contact your Sales Consultant for details.





SINGLE FAMILY HOME

Victoria

Available in 3 Communities

Optional 4th Bedroom In Lieu of Dining Room

Homes may be built in reverse of plans shown, depending on site conditions. Minor architectural changes may be made occasionally at the option of the builder. Printed material is not date stamped. Prices are subject to change. Please reference Abrazo Homes' website for most updated and accurate pricing and information. Please contact your Sales Consultant for details.





SINGLE FAMILY HOME

Victoria

Available in 3 Communities

Optional 3rd Car Garage

Homes may be built in reverse of plans shown, depending on site conditions. Minor architectural changes may be made occasionally at the option of the builder. Printed material is not date stamped. Prices are subject to change. Please reference Abrazo Homes' website for most updated and accurate pricing and information. Please contact your Sales Consultant for details.

